



**SUBLITEX**

The Innovative Printing

**Decotrans<sup>®</sup>**  
*Art Digital*

FW 21-22





WE DECLINE ANY RESPONSIBILITY FOR  
POSSIBLE COLOR DIFFERENCES IN PRODUCTION



9N847 CW 002



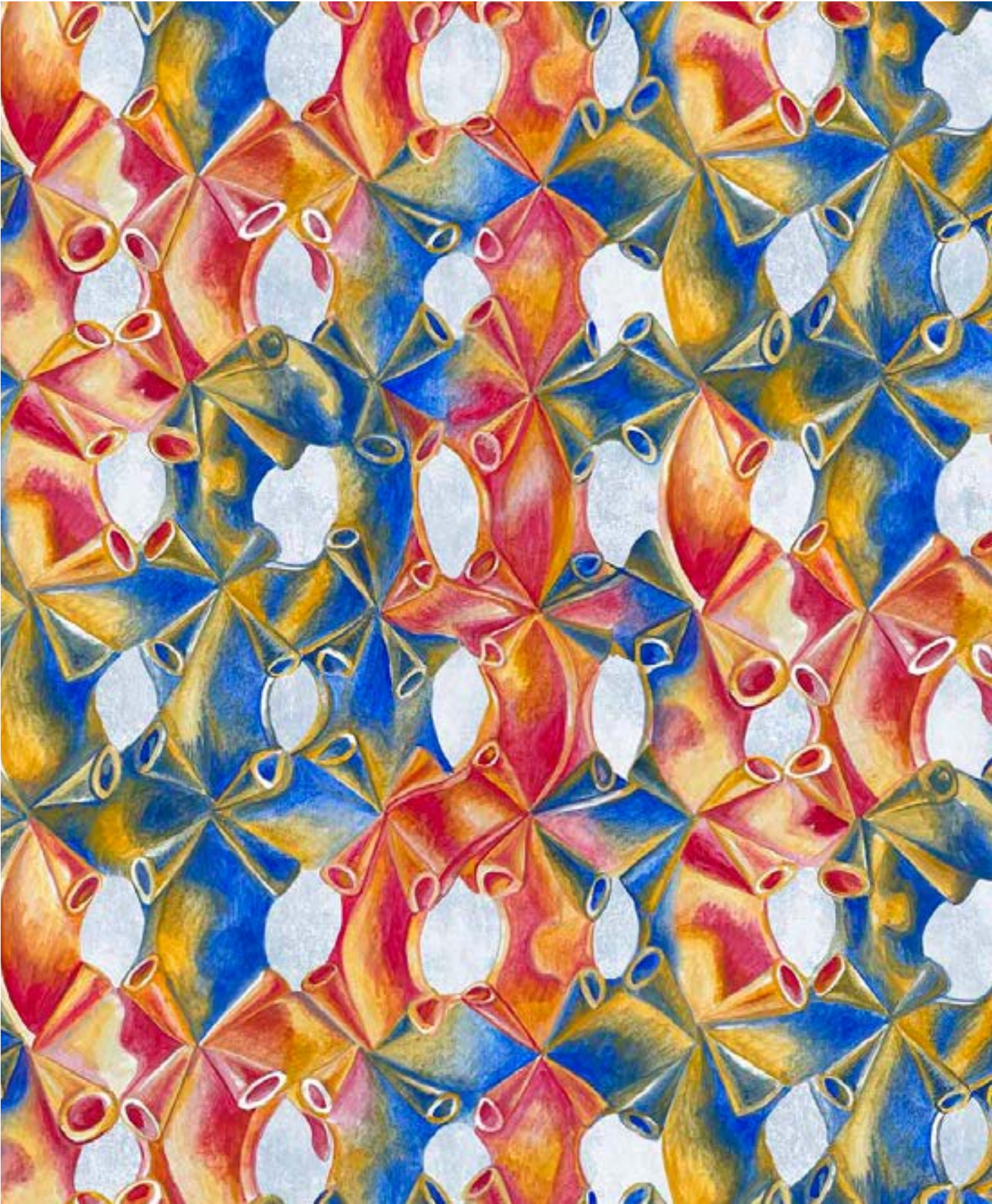
9N847 CW 003



9N847 CW 004



9N847 CW 005



WE DECLINE ANY RESPONSIBILITY FOR  
POSSIBLE COLOR DIFFERENCES IN PRODUCTION



9N848 CW 002



9N848 CW 003

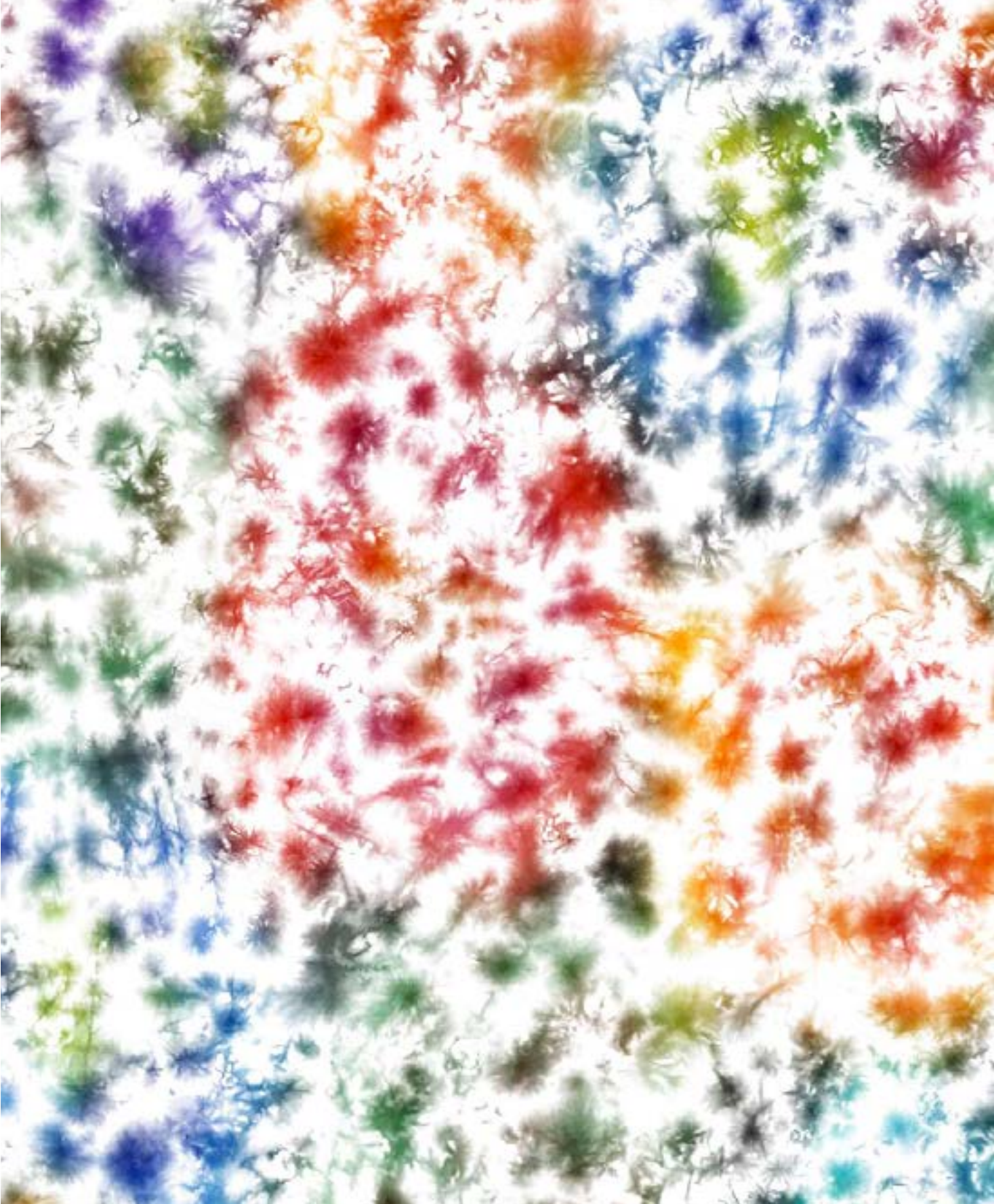


9N848 CW 004



9N848 CW 005

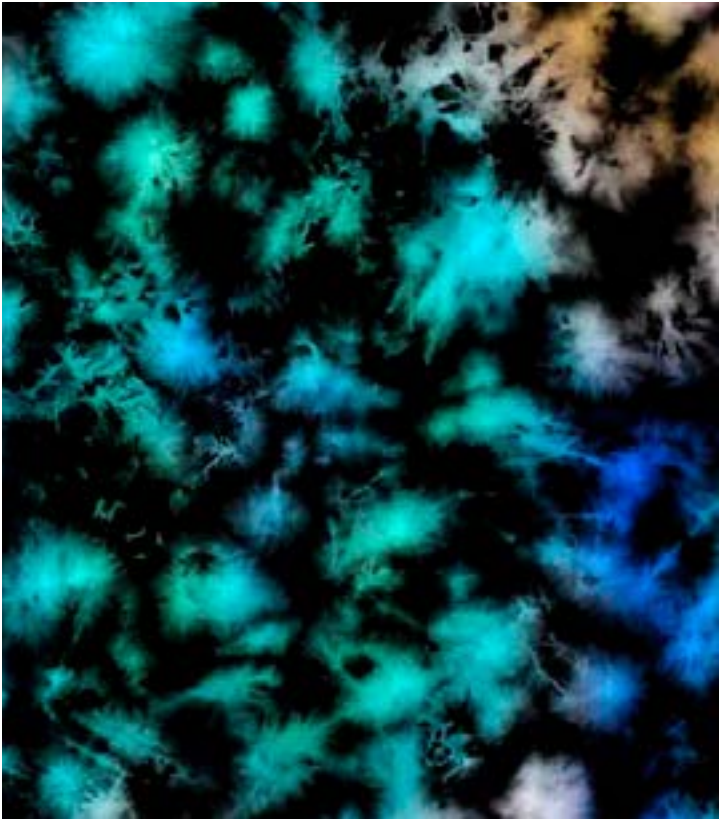
ABSTRACT



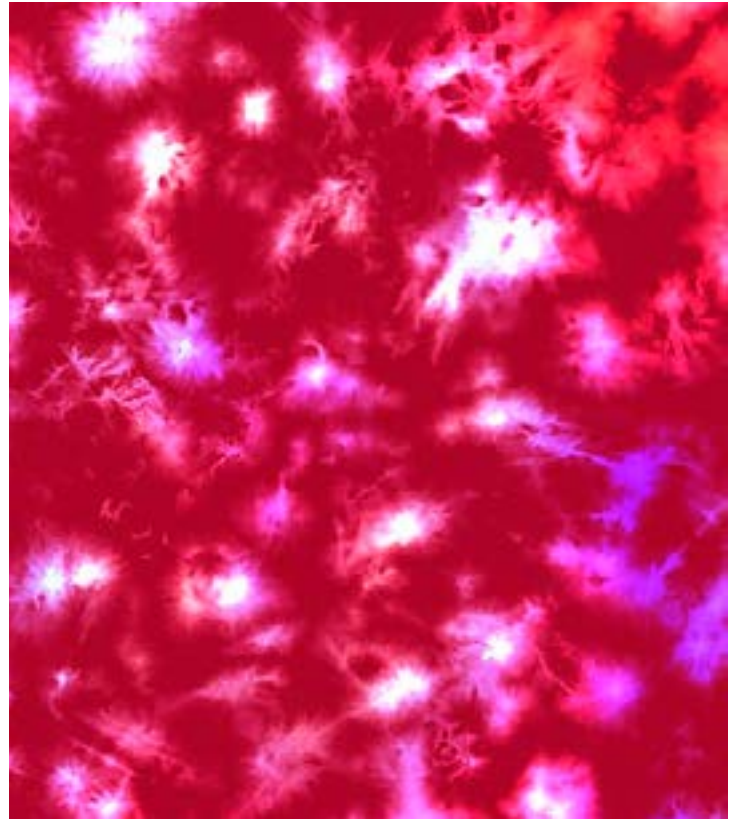
\*ONLY FOR WHITE GROUND

9N849 CW 001

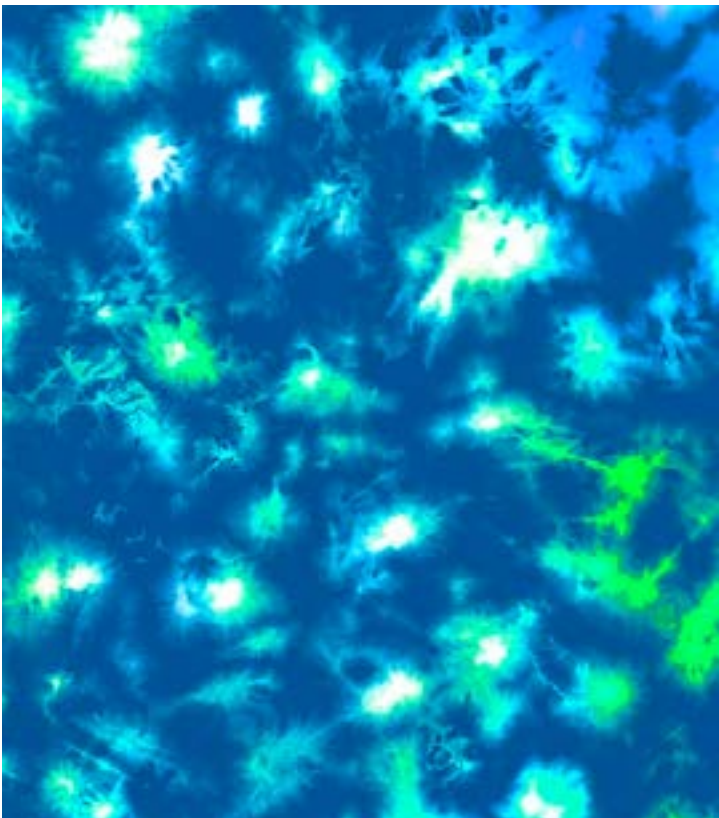
WE DECLINE ANY RESPONSIBILITY FOR  
POSSIBLE COLOR DIFFERENCES IN PRODUCTION



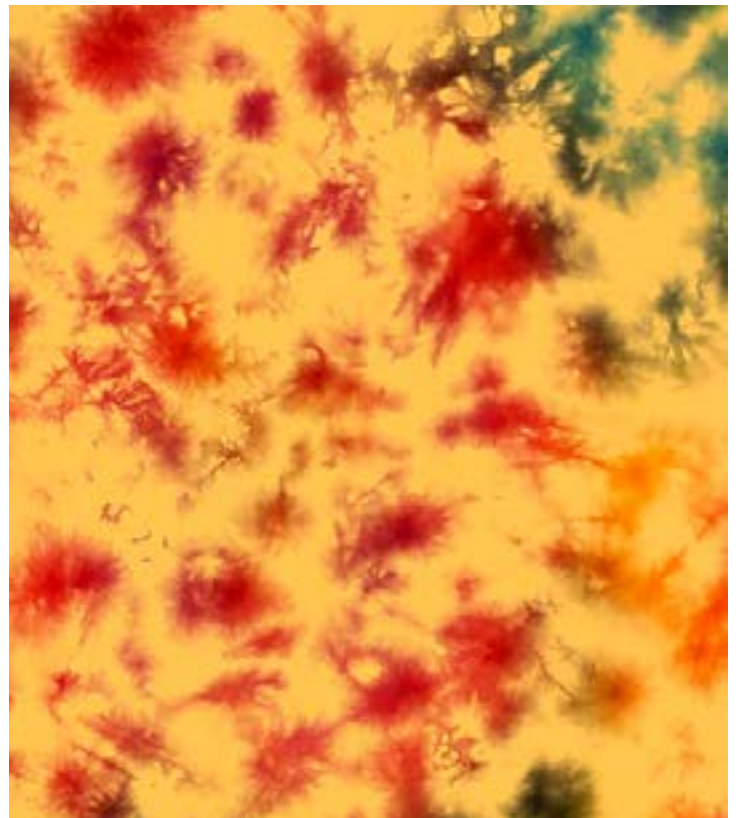
9N849 CW 002



9N849 CW 003



9N849 CW 004



9N849 CW 005



FLOWER



9N850 CW 001

WE DECLINE ANY RESPONSIBILITY FOR  
POSSIBLE COLOR DIFFERENCES IN PRODUCTION



9N850 CW 002



9N850 CW 003

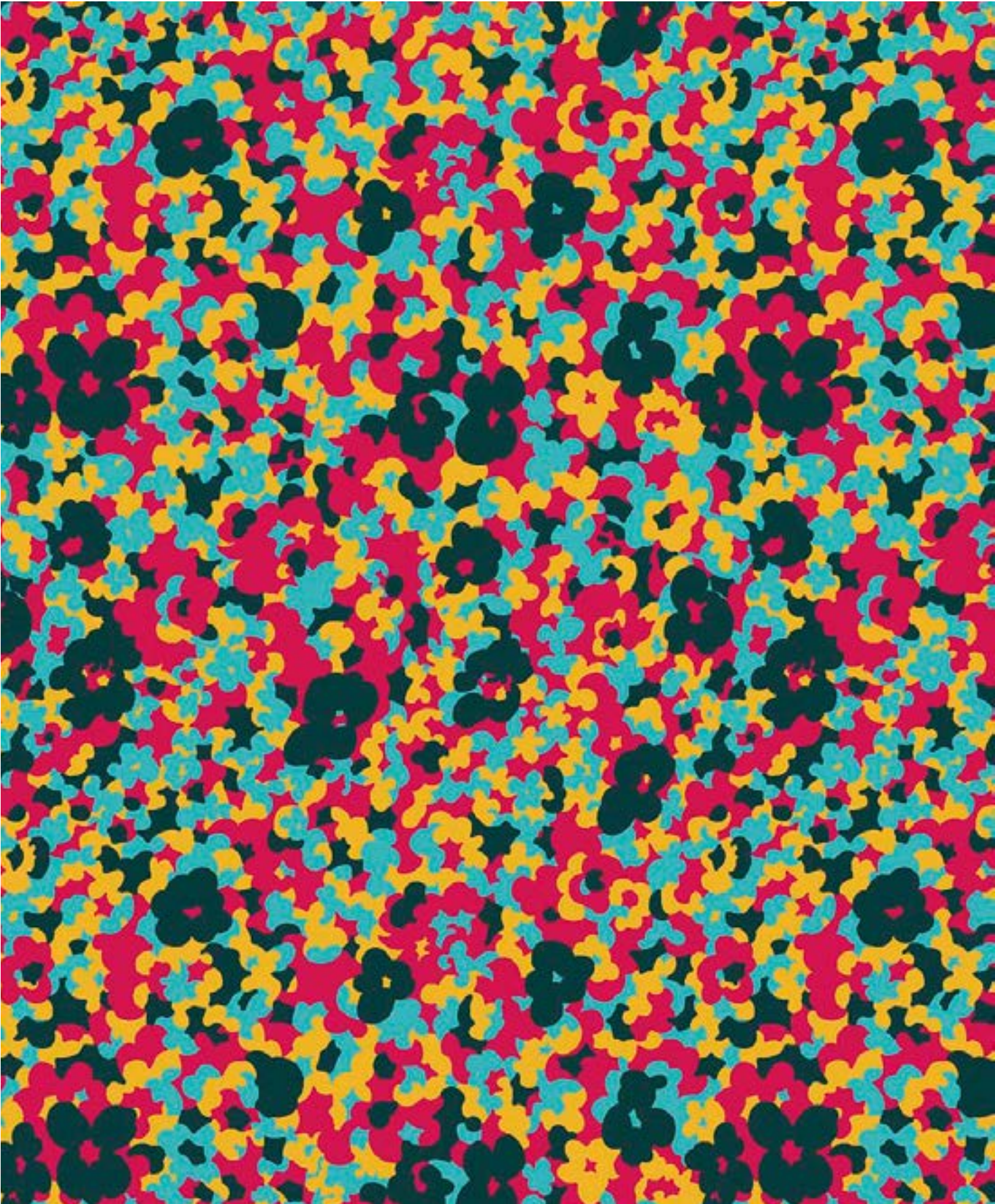


9N850 CW 004



9N850 CW 005

FLOWER



9N851 CW 001

WE DECLINE ANY RESPONSIBILITY FOR  
POSSIBLE COLOR DIFFERENCES IN PRODUCTION



9N851 CW 002



9N851 CW 003



9N851 CW 004



9N851 CW 005



WE DECLINE ANY RESPONSIBILITY FOR  
POSSIBLE COLOR DIFFERENCES IN PRODUCTION



\*ONLY FOR WHITE GROUND

9N852 CW 002



9N852 CW 003



9N852 CW 004



9N852 CW 005

FLOWER



\*ONLY FOR WHITE GROUND

9N853 CW 001

WE DECLINE ANY RESPONSIBILITY FOR  
POSSIBLE COLOR DIFFERENCES IN PRODUCTION



9N853 CW 002



9N853 CW 003



9N853 CW 004



9N853 CW 005







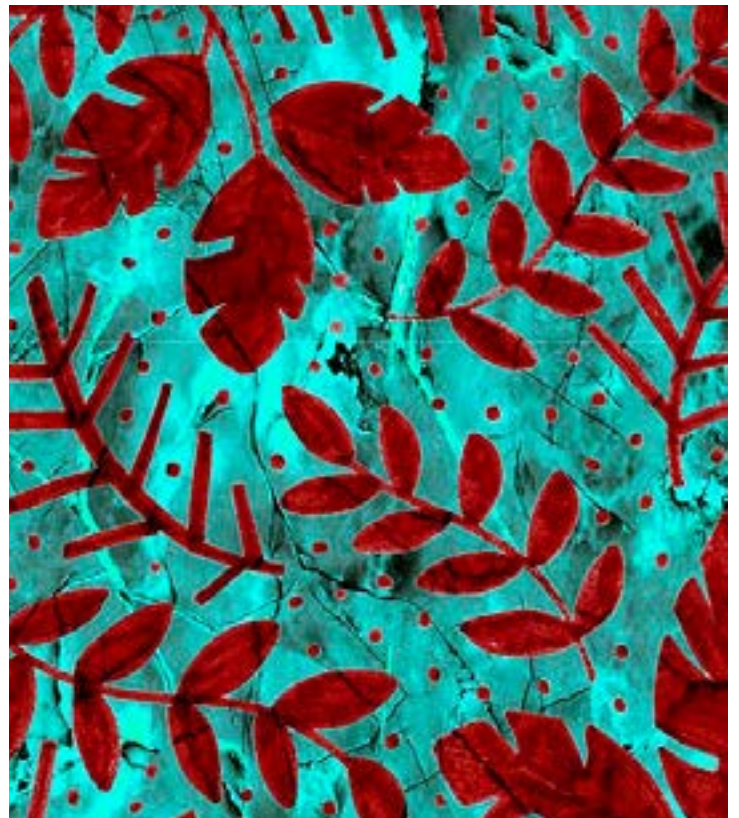
9N854 CW 002



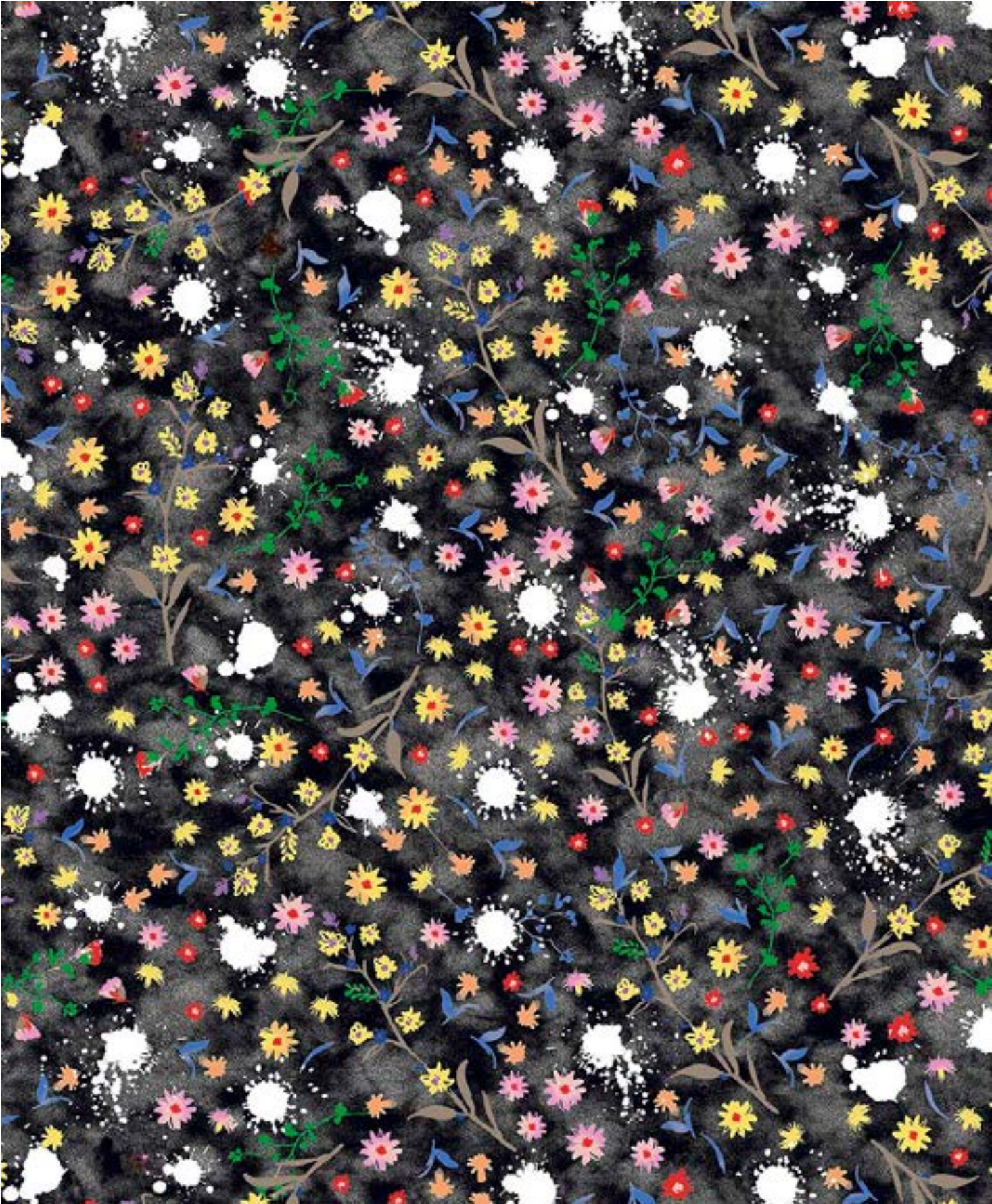
9N854 CW 003



9N854 CW 004



9N854 CW 005



WE DECLINE ANY RESPONSIBILITY FOR POSSIBLE COLOR DIFFERENCES IN PRODUCTION



\*ONLY FOR WHITE GROUND

9N855 CW 002



9N855 CW 003



9N855 CW 004

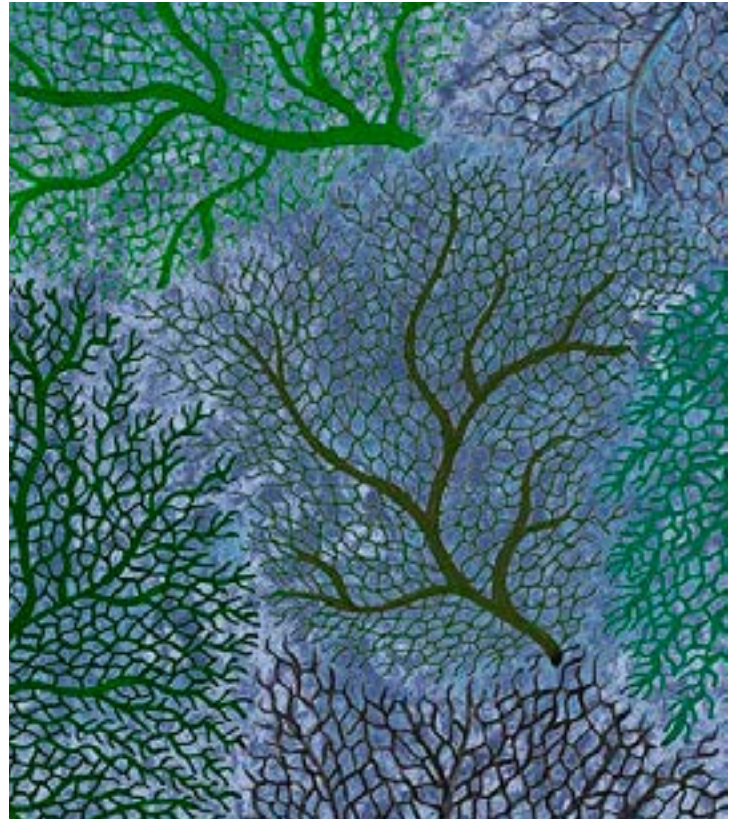


9N855 CW 005





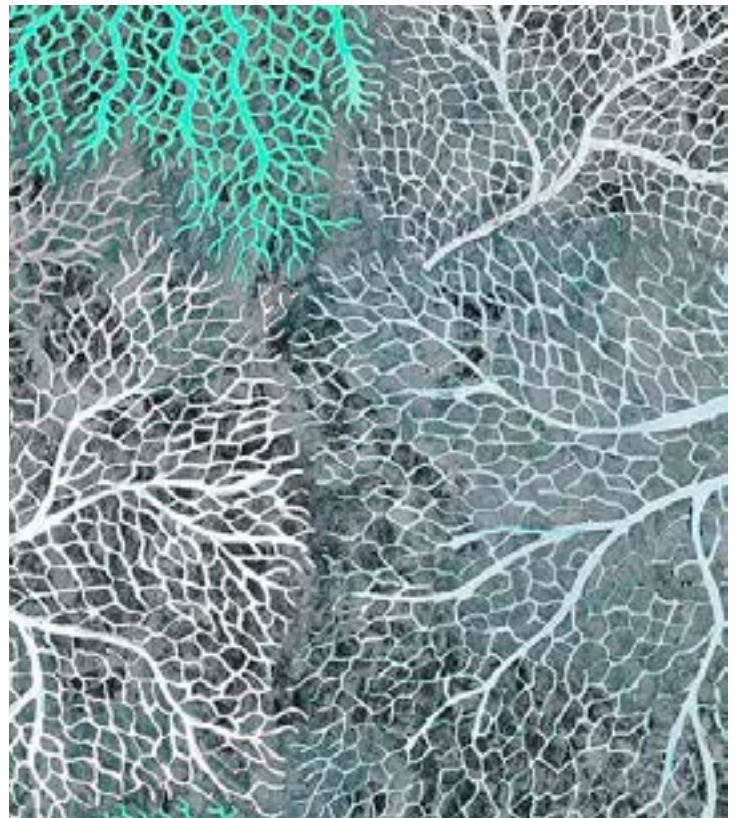
9N856 CW 002



9N856 CW 003

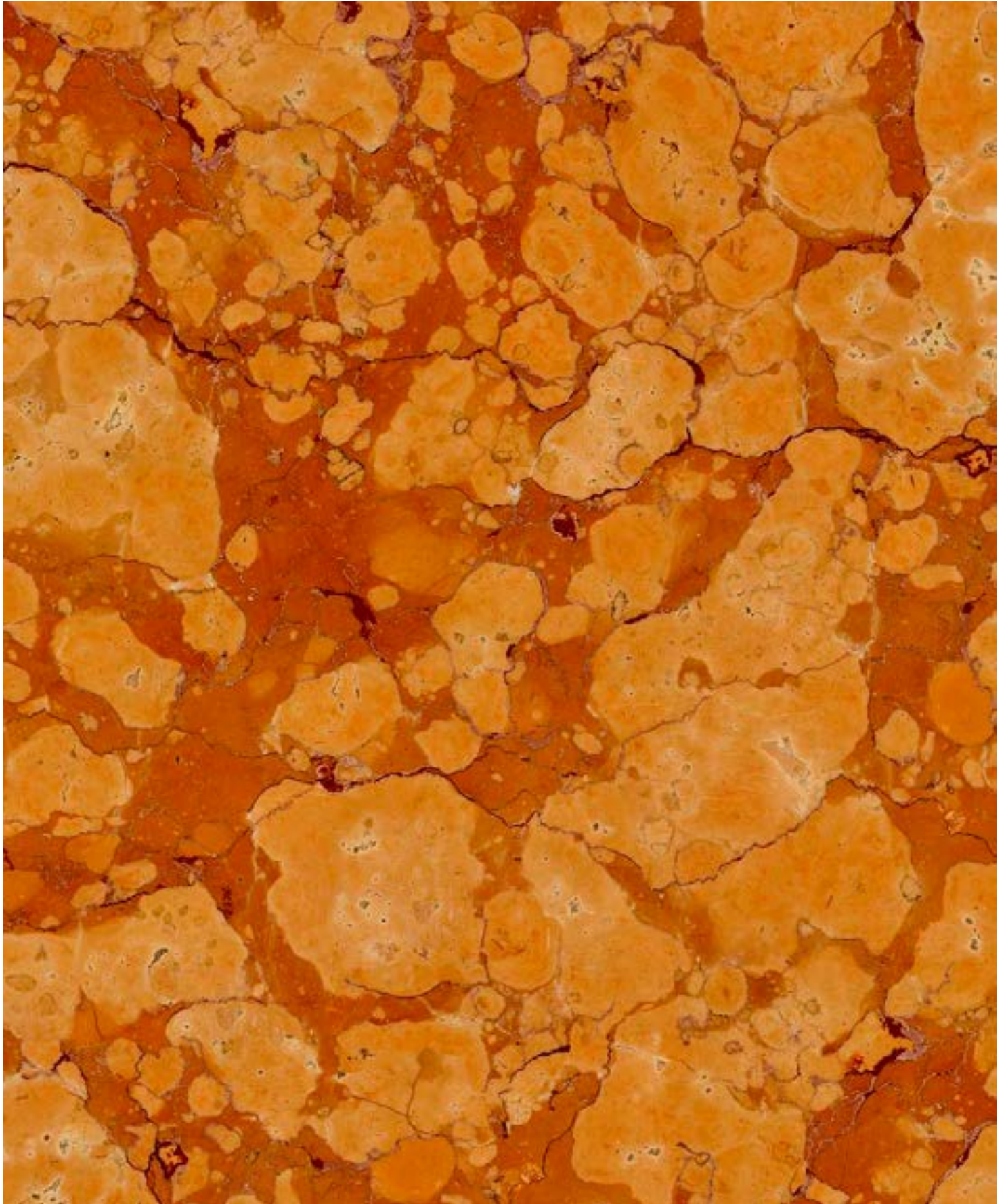


9N856 CW 004

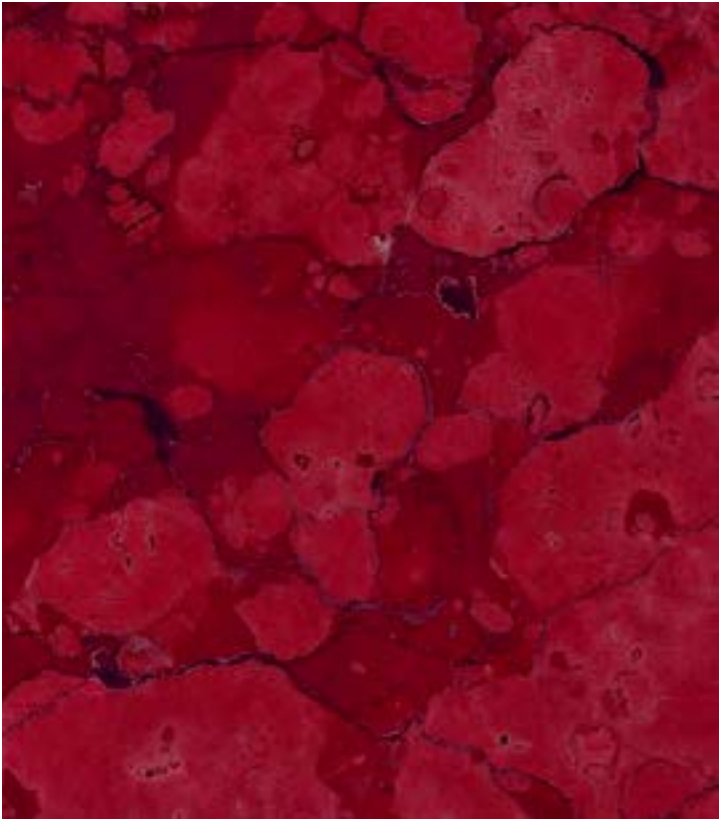


9N856 CW 005

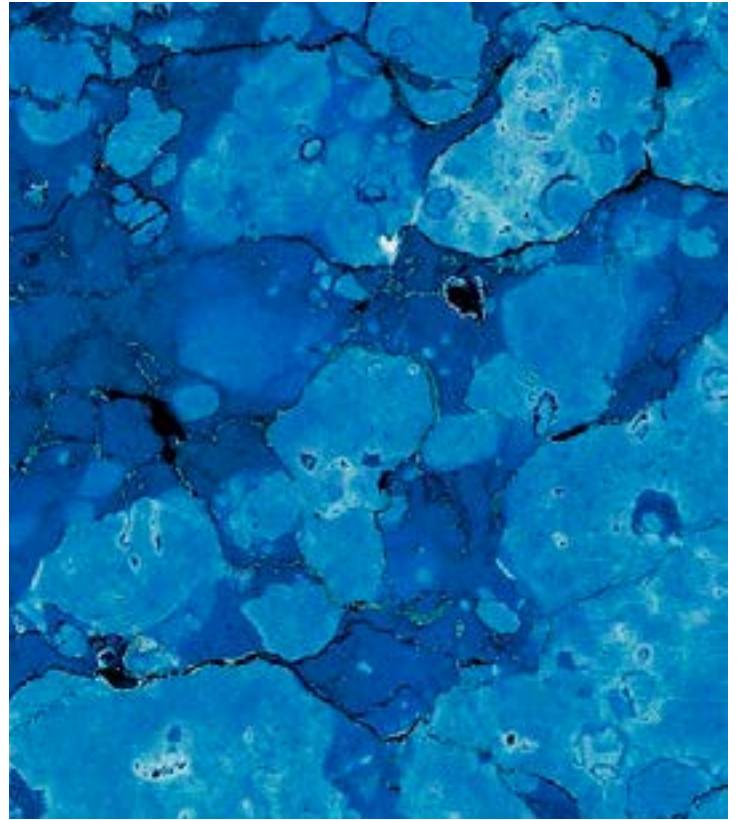
MARBLE / STONE



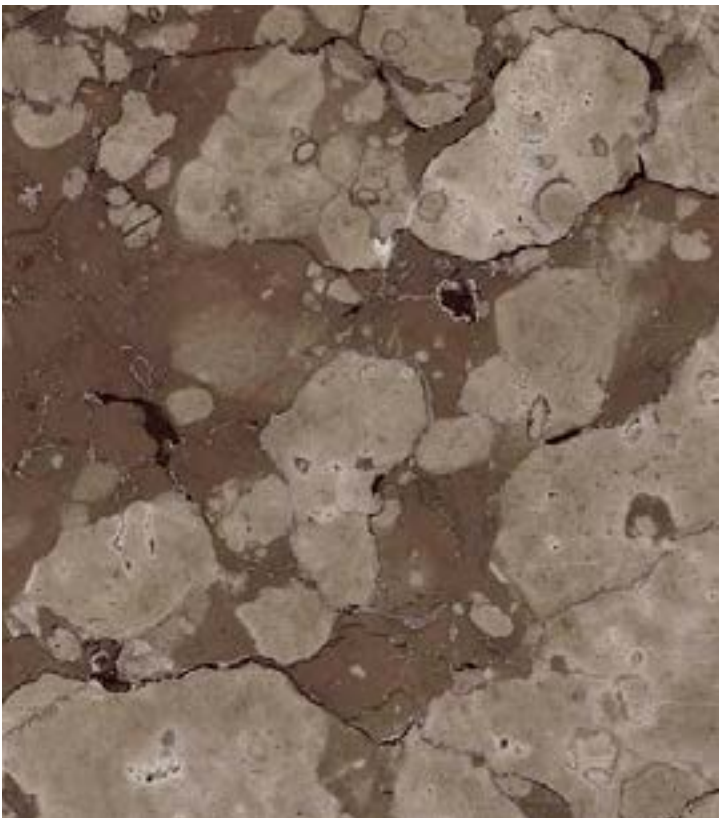
9N857 CW 001



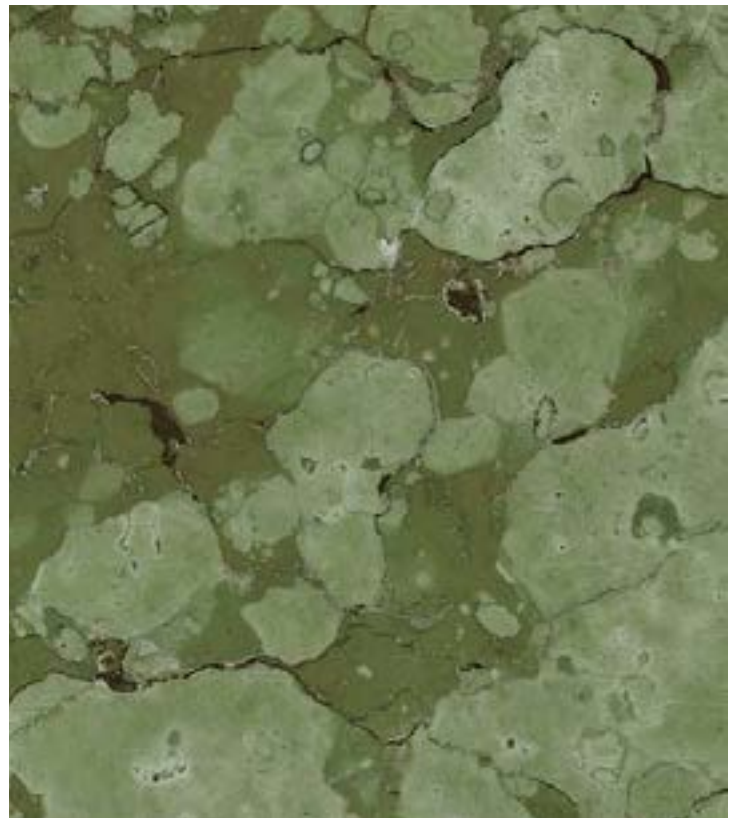
9N857 CW 002



9N857 CW 003



9N857 CW 004



9N857 CW 005





WE DECLINE ANY RESPONSIBILITY FOR  
POSSIBLE COLOR DIFFERENCES IN PRODUCTION



9N858 CW 002



9N858 CW 003



9N858 CW 004



9N858 CW 005



WE DECLINE ANY RESPONSIBILITY FOR  
POSSIBLE COLOR DIFFERENCES IN PRODUCTION



9N859 CW 002



9N859 CW 003

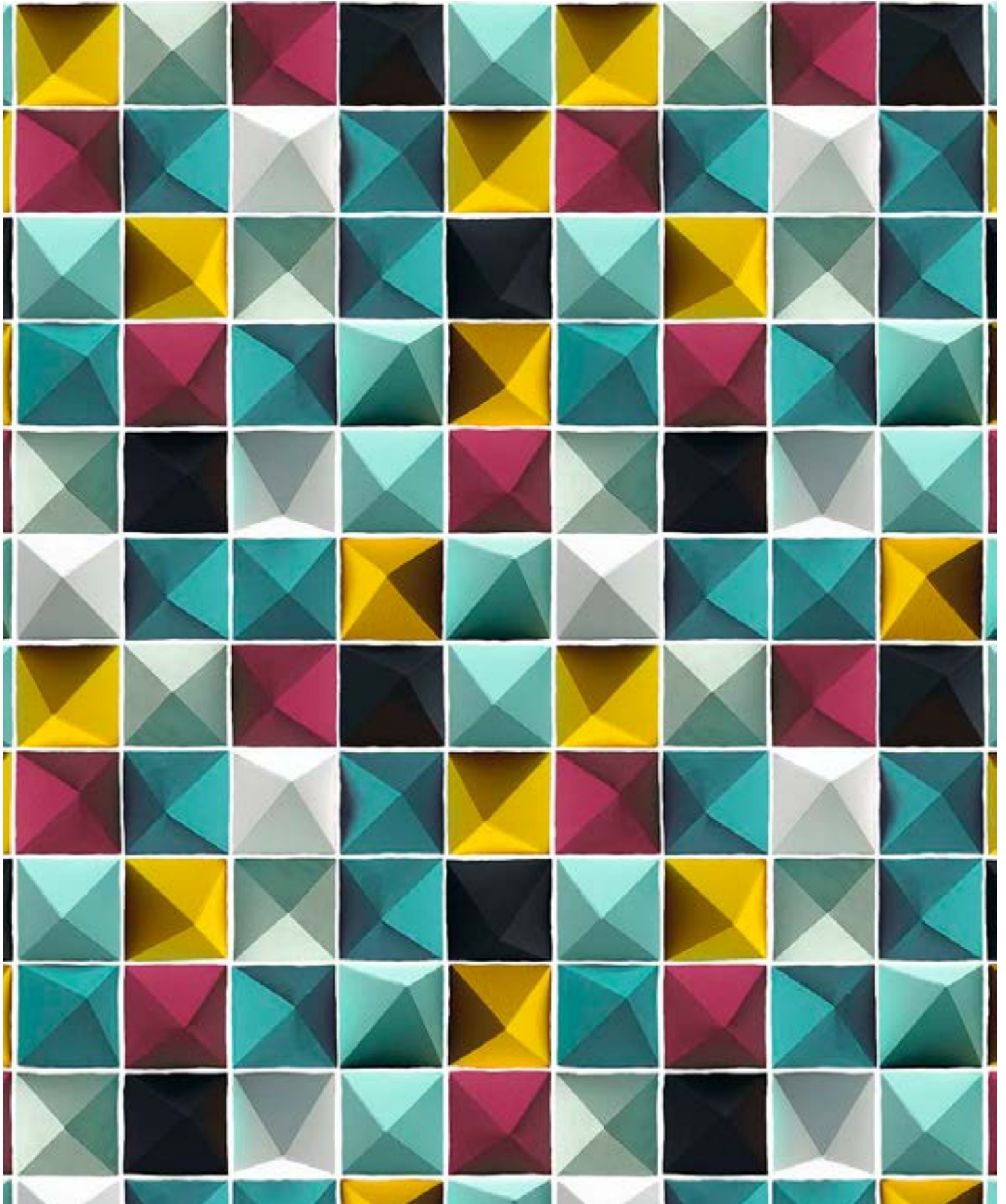


9N859 CW 004



9N859 CW 005

GEOMETRIC

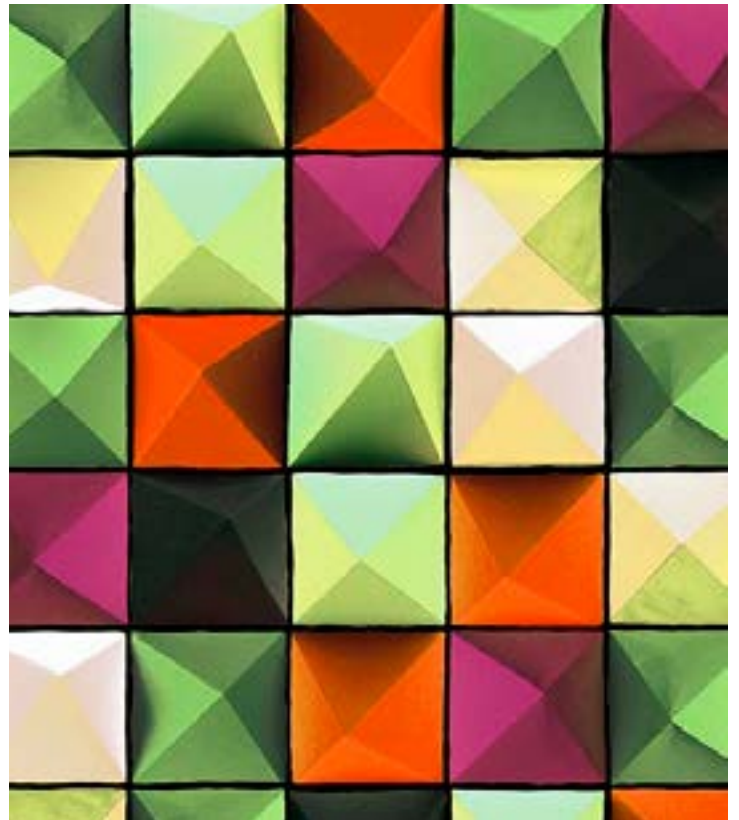


9N860 CW 001

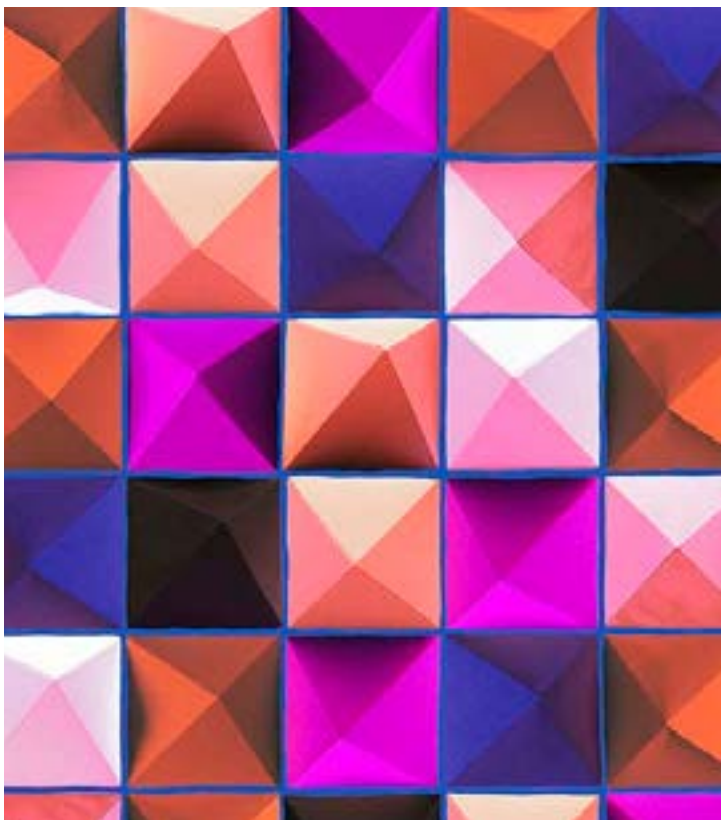
WE DECLINE ANY RESPONSIBILITY FOR POSSIBLE COLOR DIFFERENCES IN PRODUCTION



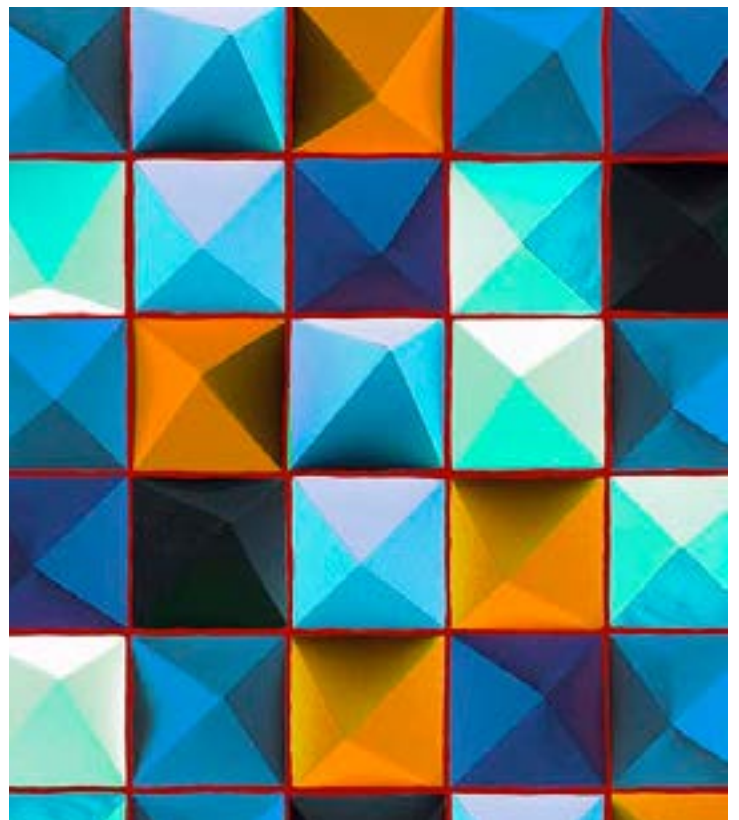
9N860 CW 002



9N860 CW 003



9N860 CW 004



9N860 CW 005

GEOMETRIC



9N861 CW 001

WE DECLINE ANY RESPONSIBILITY FOR  
POSSIBLE COLOR DIFFERENCES IN PRODUCTION



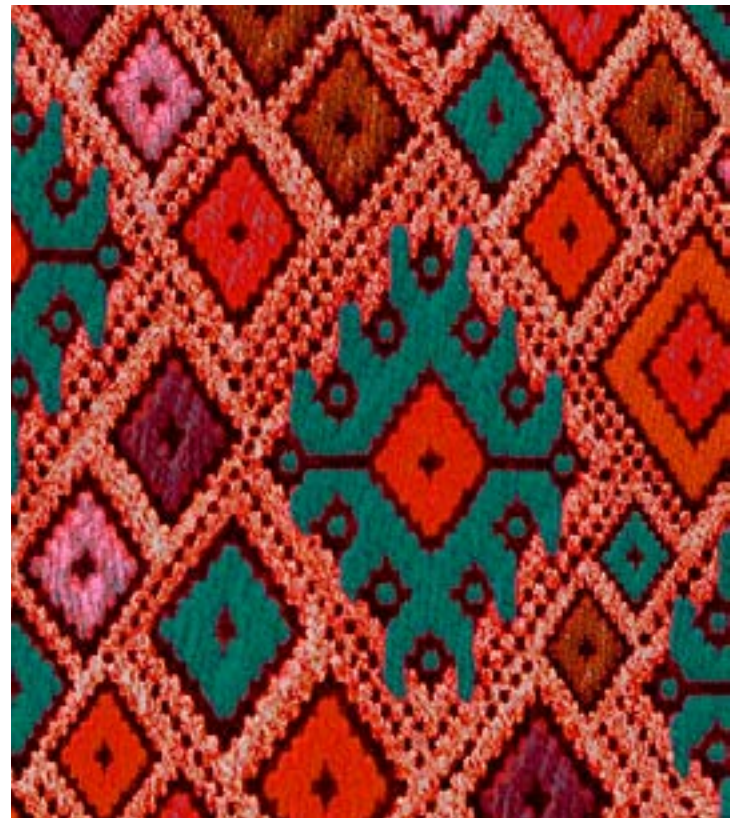
9N861 CW 002



9N861 CW 003



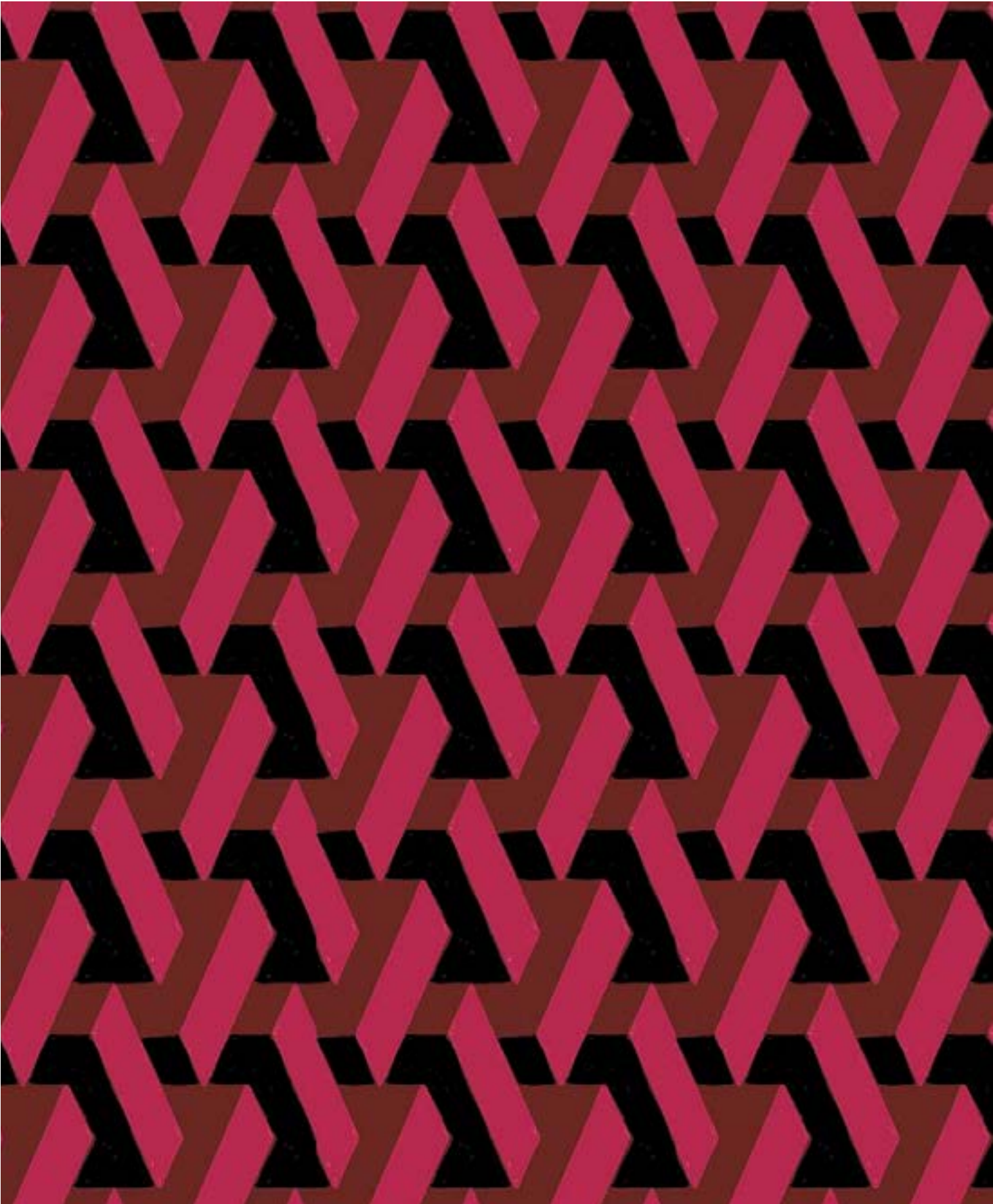
9N861 CW 004



9N861 CW 005



GEOMETRIC



9N862 CW 001



WE DECLINE ANY RESPONSIBILITY FOR  
POSSIBLE COLOR DIFFERENCES IN PRODUCTION



9N862 CW 002



9N862 CW 003

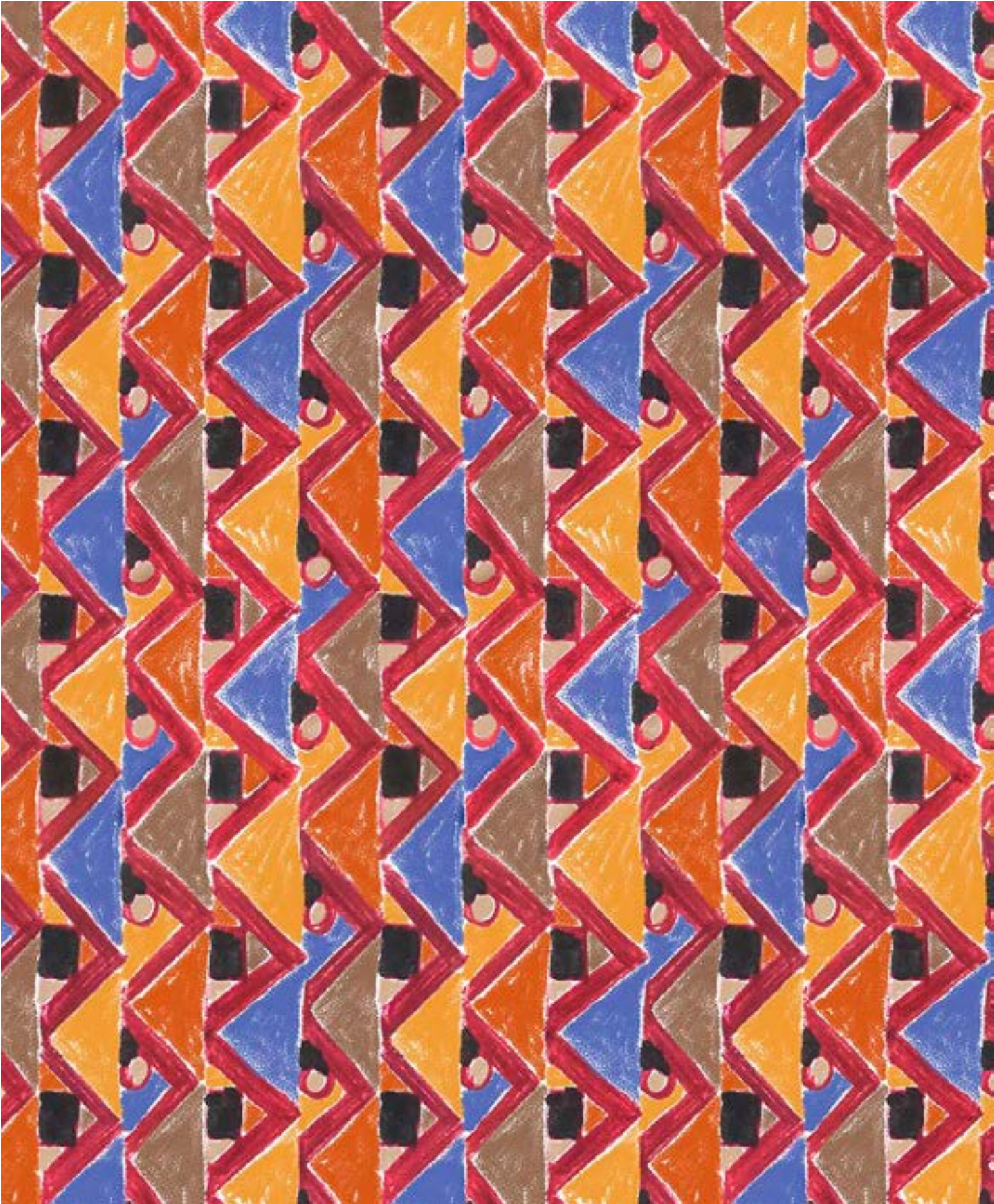


9N862 CW 004



9N862 CW 005

GEOMETRIC



9N863 CW 001

WE DECLINE ANY RESPONSIBILITY FOR  
POSSIBLE COLOR DIFFERENCES IN PRODUCTION



9N863 CW 002



9N863 CW 003

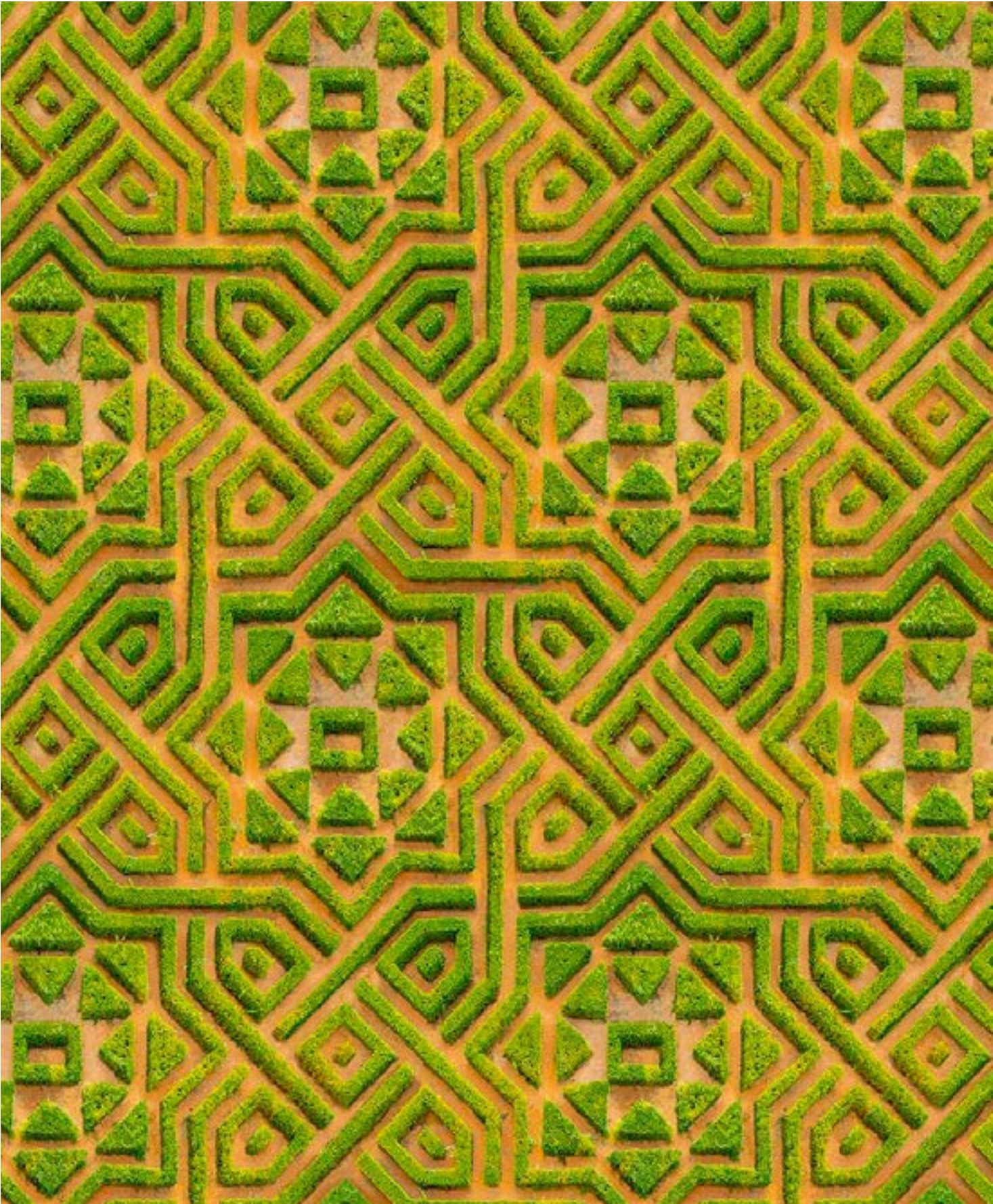


9N863 CW 004



9N863 CW 005

GEOMETRIC

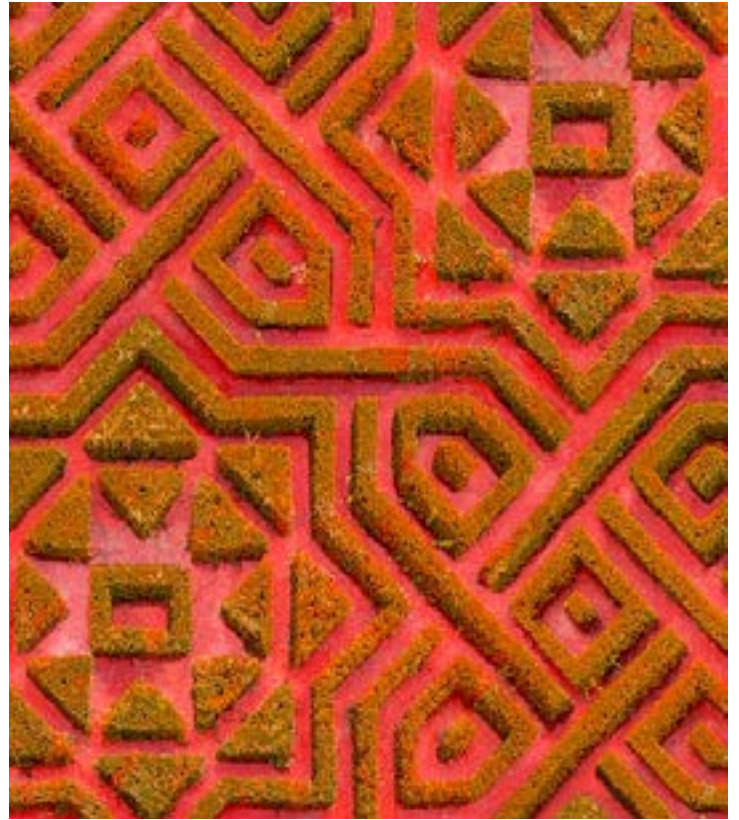


9N864 CW 001

WE DECLINE ANY RESPONSIBILITY FOR  
POSSIBLE COLOR DIFFERENCES IN PRODUCTION



9N864 CW 002



9N864 CW 003



9N864 CW 004



9N864 CW 005

GEOMETRIC



\*ONLY FOR WHITE GROUND

9N865 CW 001

WE DECLINE ANY RESPONSIBILITY FOR  
POSSIBLE COLOR DIFFERENCES IN PRODUCTION



\*ONLY FOR WHITE GROUND

9N865 CW 002



\*ONLY FOR WHITE GROUND

9N865 CW 003



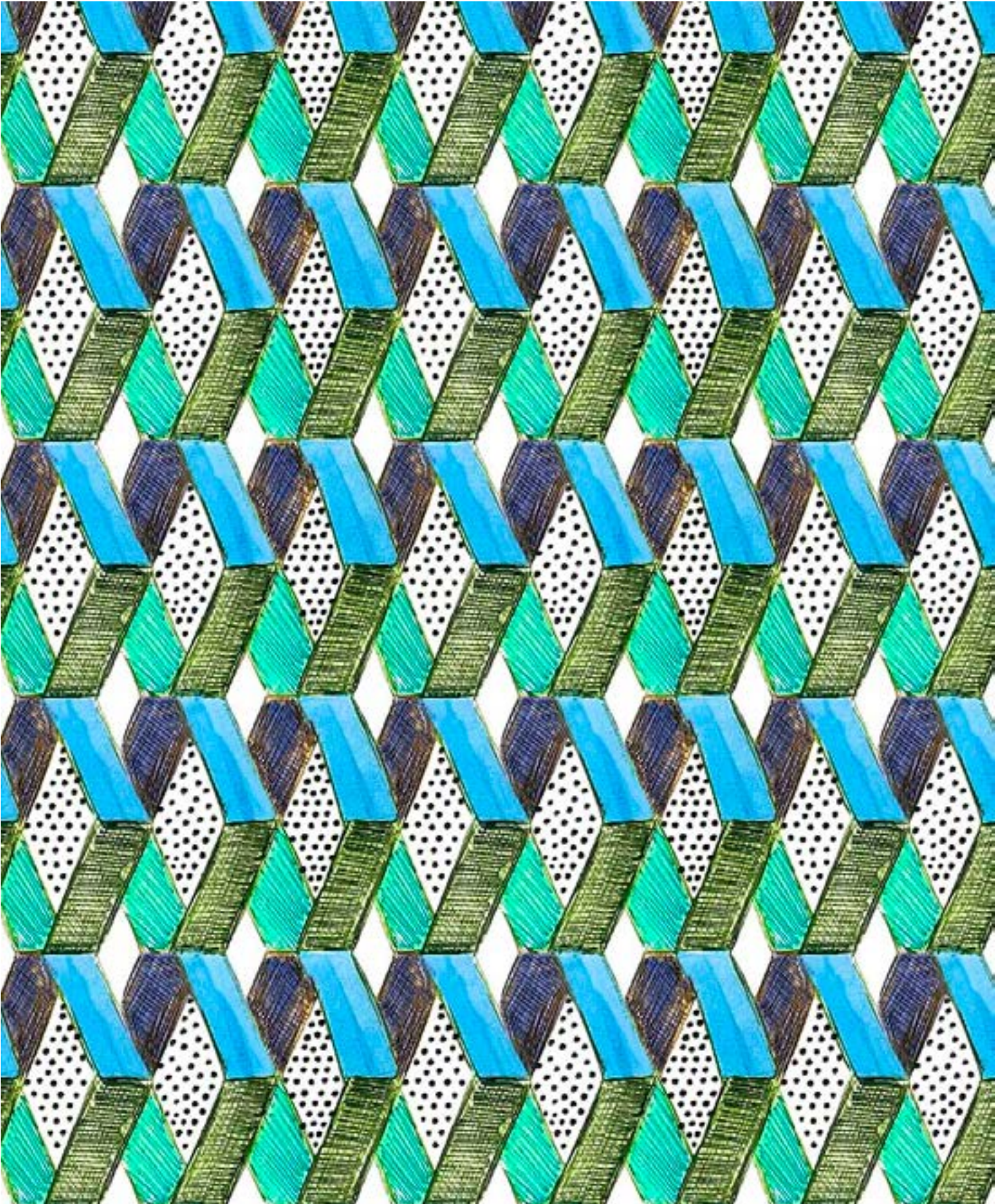
9N865 CW 004



9N865 CW 005



GEOMETRIC



\*ONLY FOR WHITE GROUND

9N866 CW 001

WE DECLINE ANY RESPONSIBILITY FOR POSSIBLE COLOR DIFFERENCES IN PRODUCTION



9N866 CW 002



9N866 CW 003



9N866 CW 004



9N866 CW 005

SKIN



9N867 CW 001

WE DECLINE ANY RESPONSIBILITY FOR  
POSSIBLE COLOR DIFFERENCES IN PRODUCTION



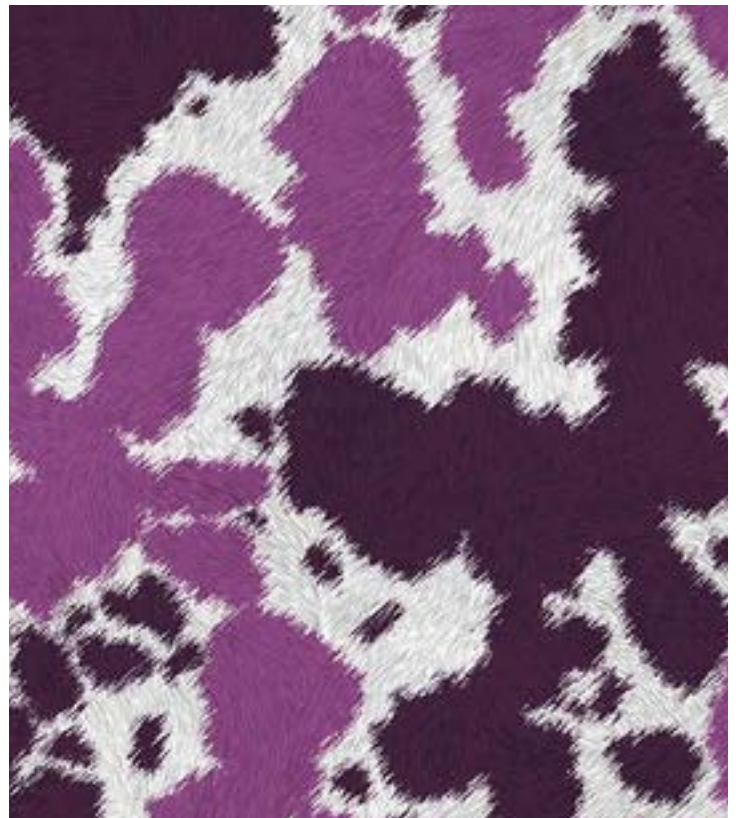
9N867 CW 002



9N867 CW 003



9N867 CW 004



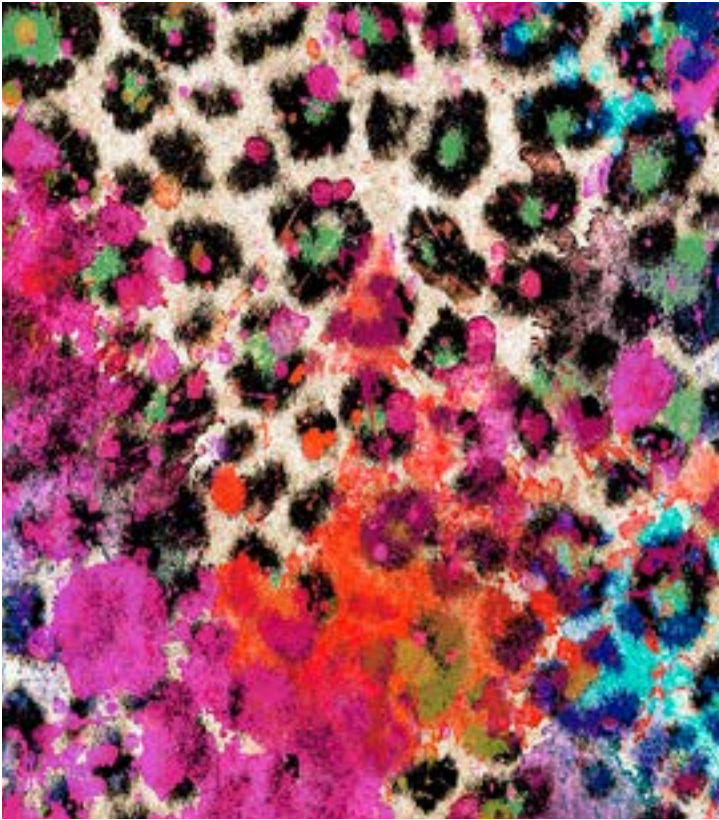
9N867 CW 005

SKIN

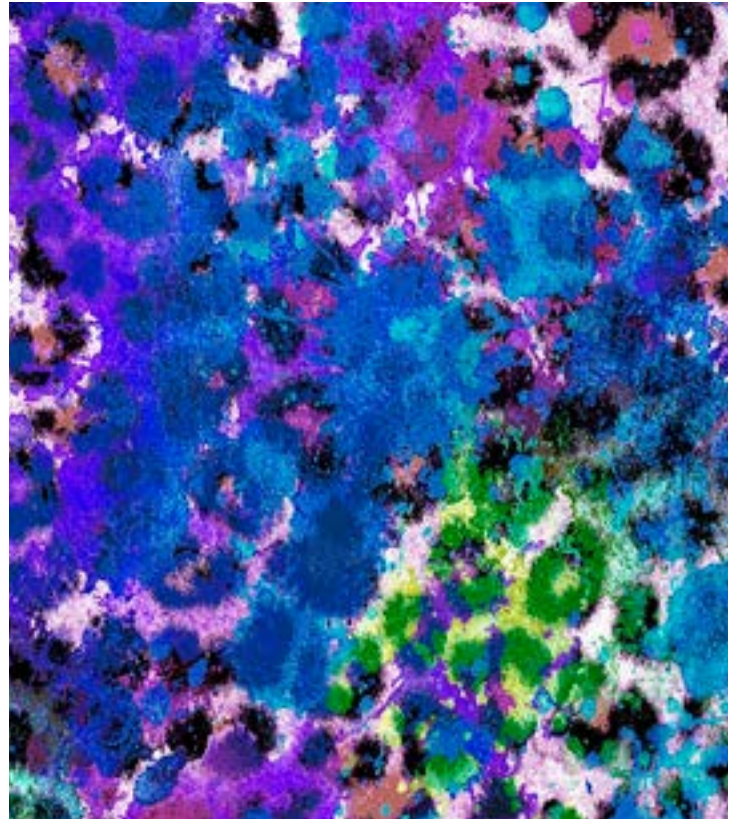


9N868 CW 001

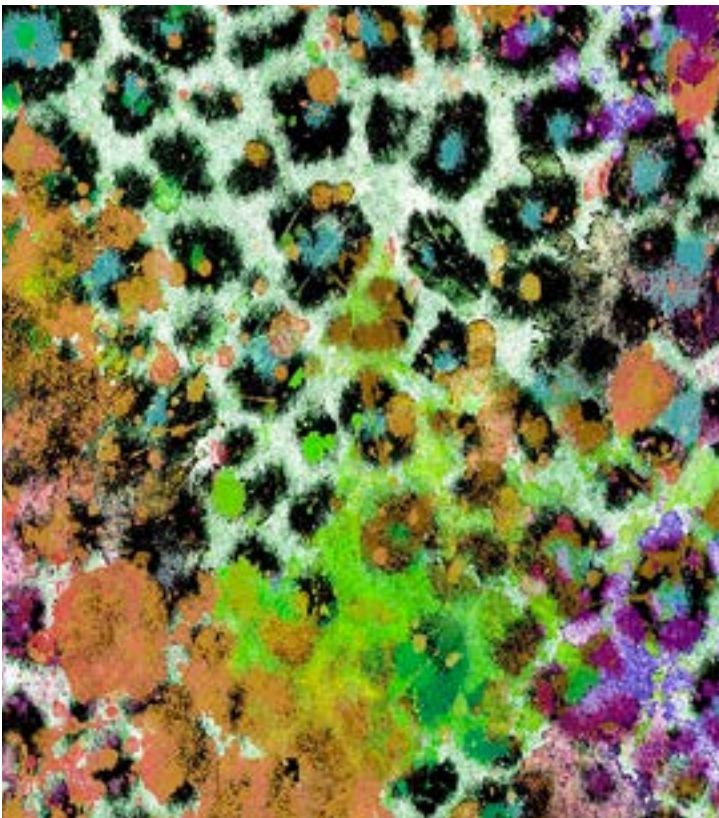
WE DECLINE ANY RESPONSIBILITY FOR  
POSSIBLE COLOR DIFFERENCES IN PRODUCTION



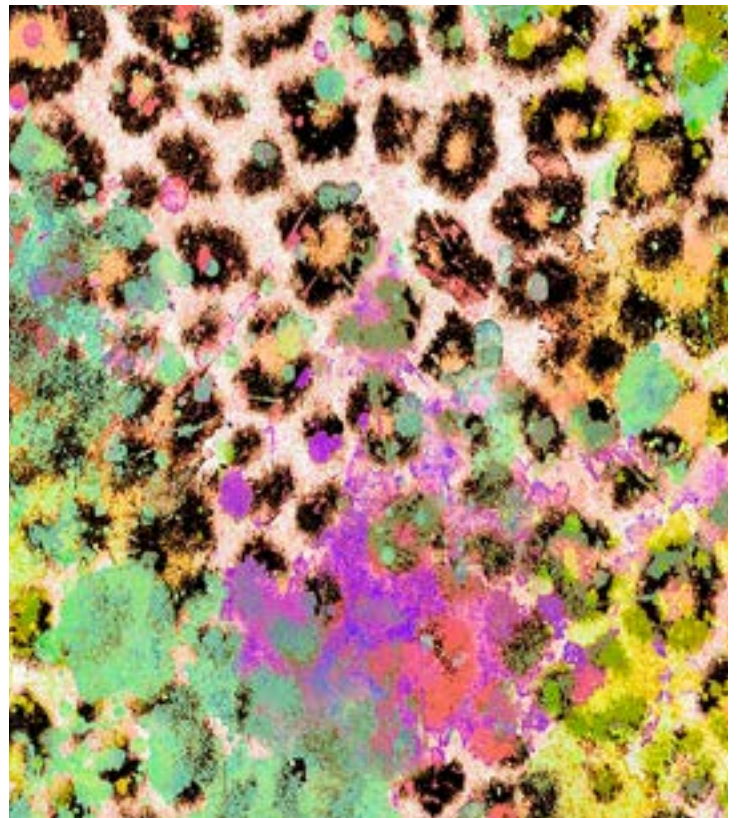
9N868 CW 002



9N868 CW 003

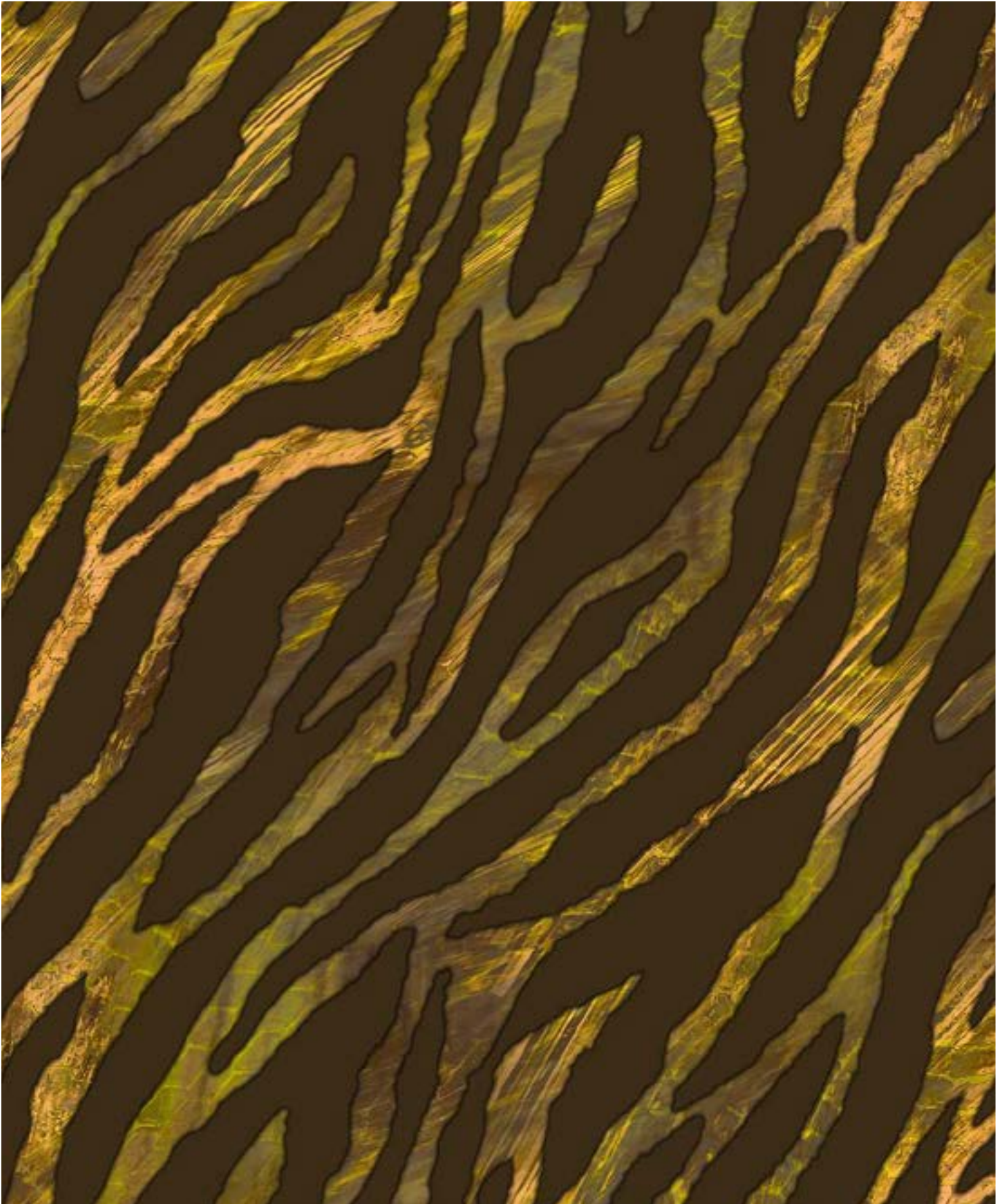


9N868 CW 004

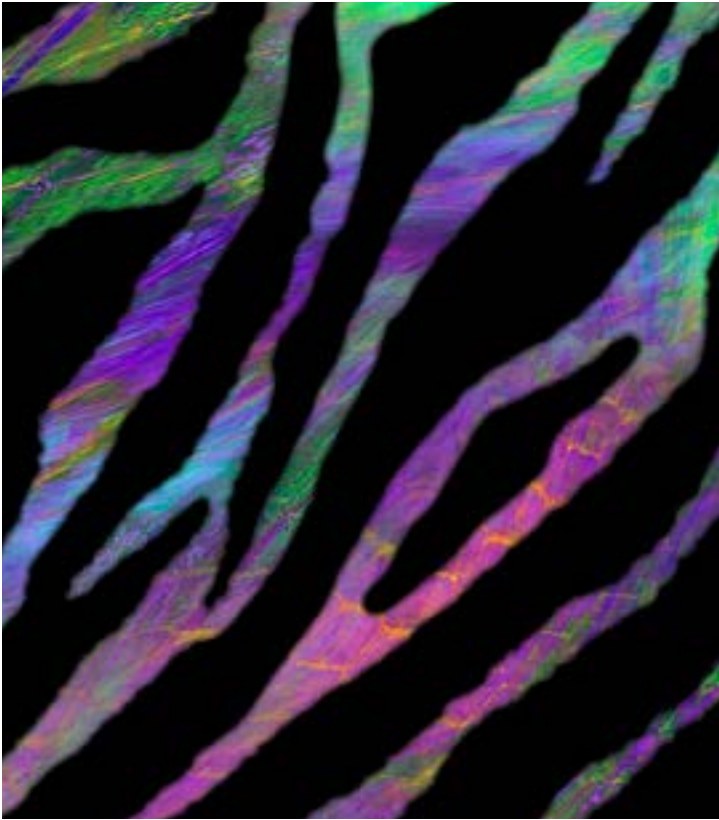


9N868 CW 005

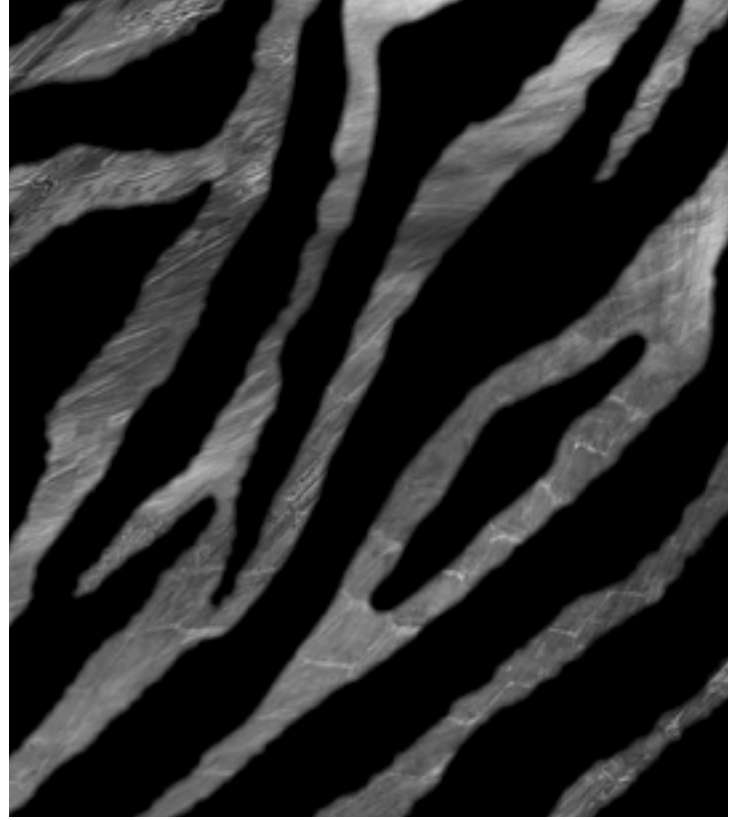
SKIN



9N869 CW 001



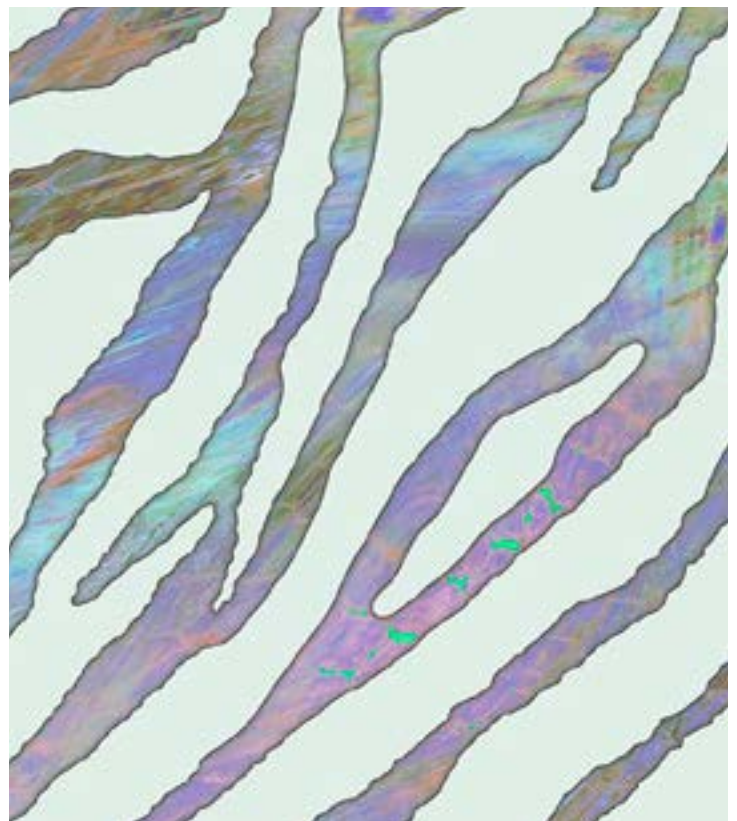
9N869 CW 002



9N869 CW 003



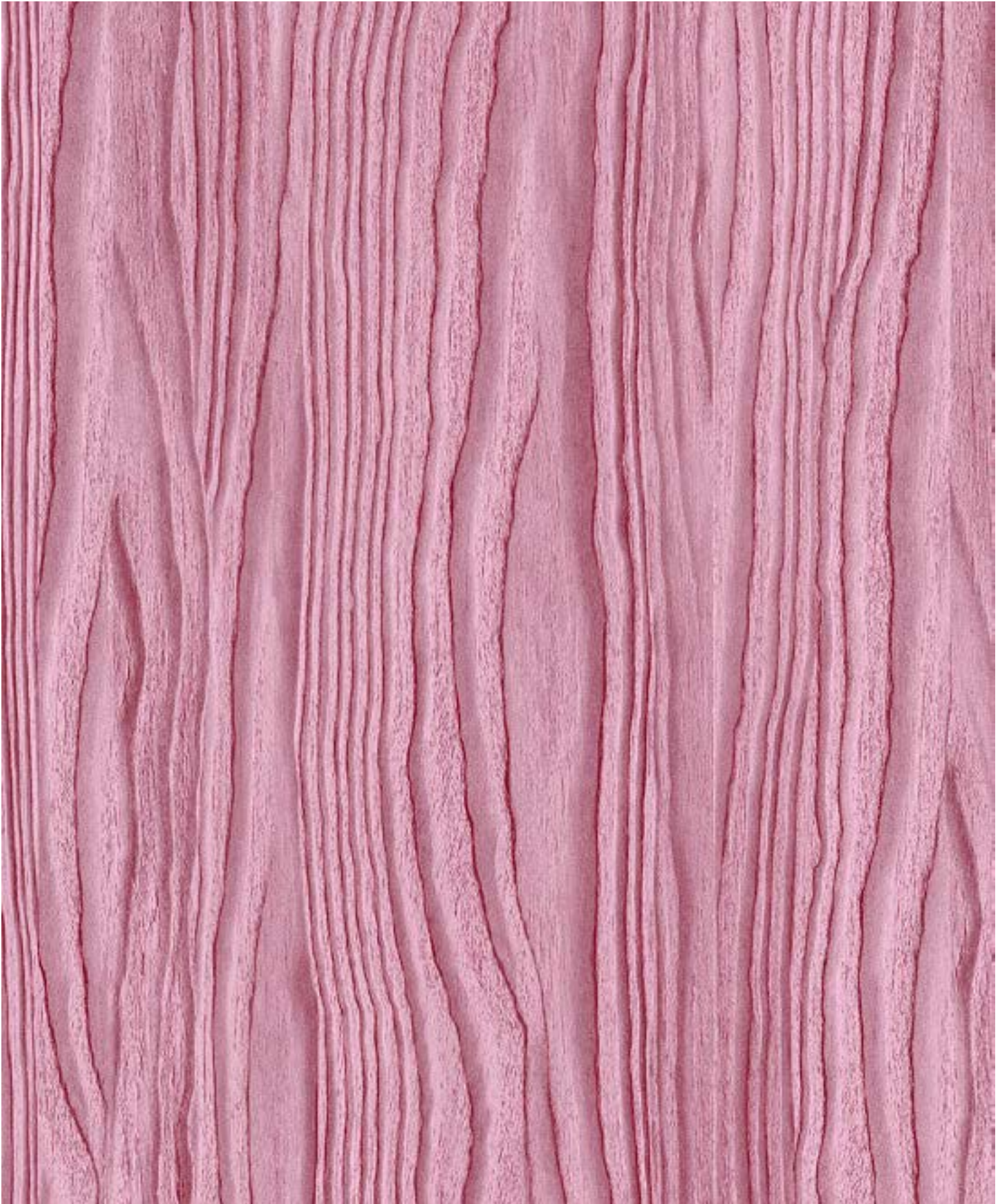
9N869 CW 004



9N869 CW 005

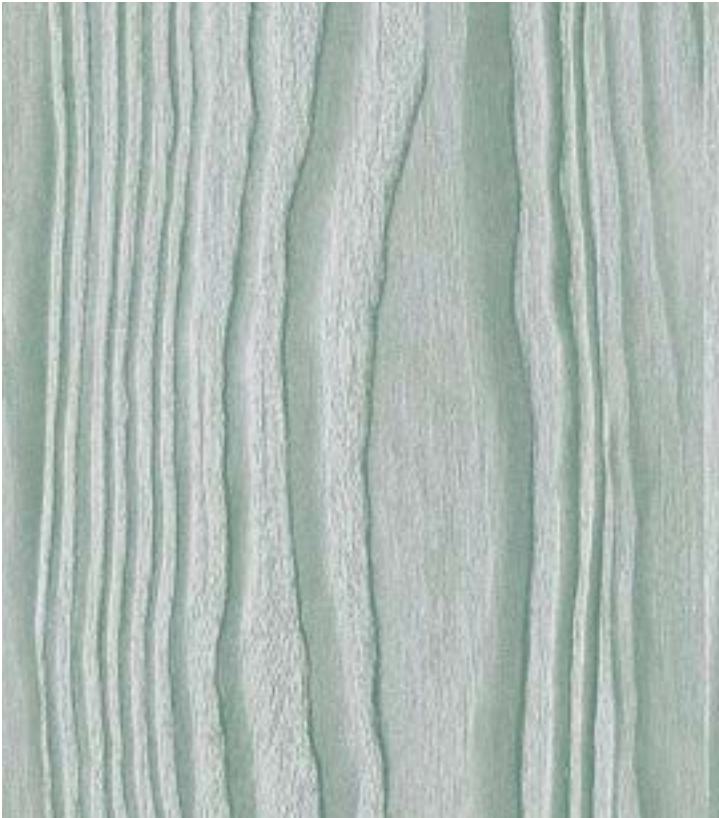


WOOD



9N870 CW 001

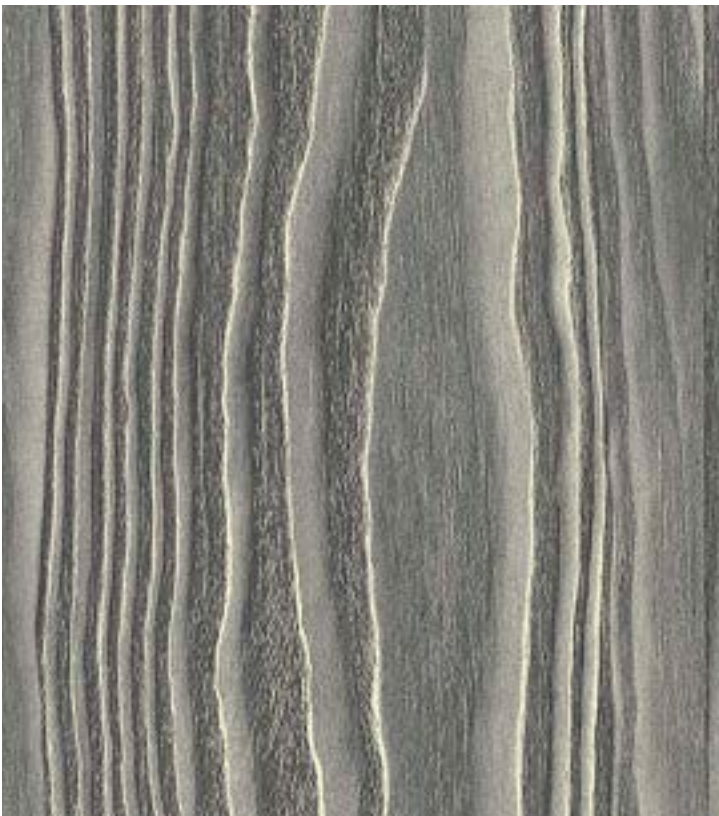
WE DECLINE ANY RESPONSIBILITY FOR  
POSSIBLE COLOR DIFFERENCES IN PRODUCTION



9N870 CW 002



9N870 CW 003



9N870 CW 004



9N870 CW 005





9N871 CW 002



9N871 CW 003



9N871 CW 004



9N871 CW 005

AND MORE



\*ONLY FOR WHITE GROUND

9N872 CW 001



\*ONLY FOR WHITE GROUND

9N872 CW 002

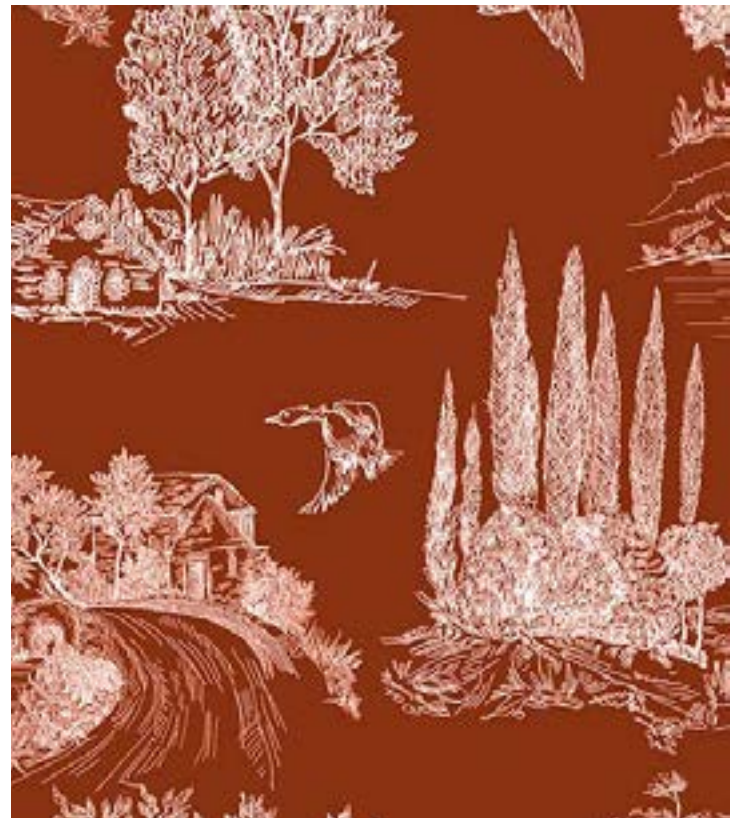


\*ONLY FOR WHITE GROUND

9N872 CW 003



9N872 CW 004



9N872 CW 005

AND MORE



9N873 CW 001

WE DECLINE ANY RESPONSIBILITY FOR  
POSSIBLE COLOR DIFFERENCES IN PRODUCTION



9N873 CW 002



9N873 CW 003



9N873 CW 004



9N873 CW 005



AND MORE

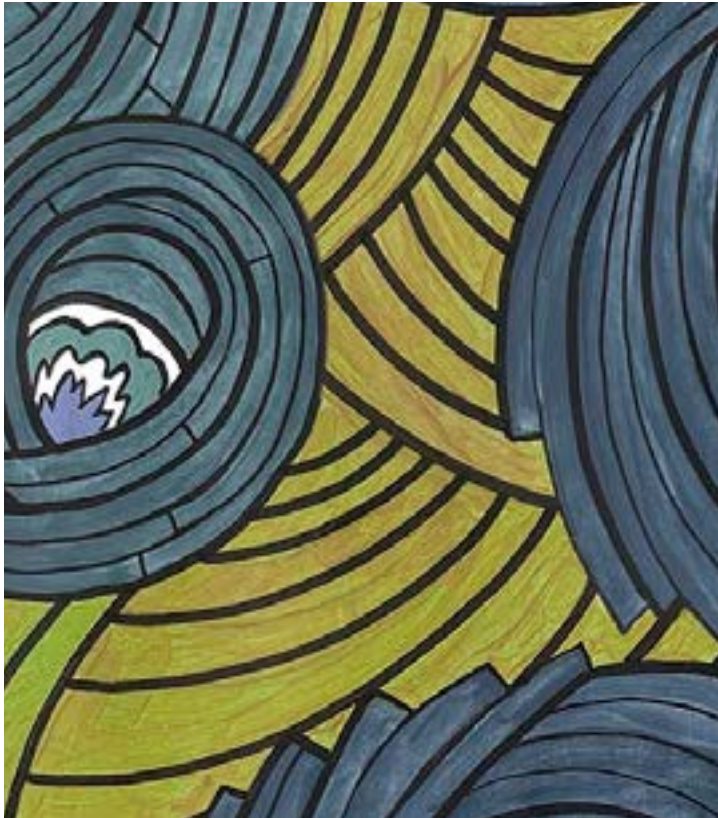


9N874 CW 001

WE DECLINE ANY RESPONSIBILITY FOR  
POSSIBLE COLOR DIFFERENCES IN PRODUCTION



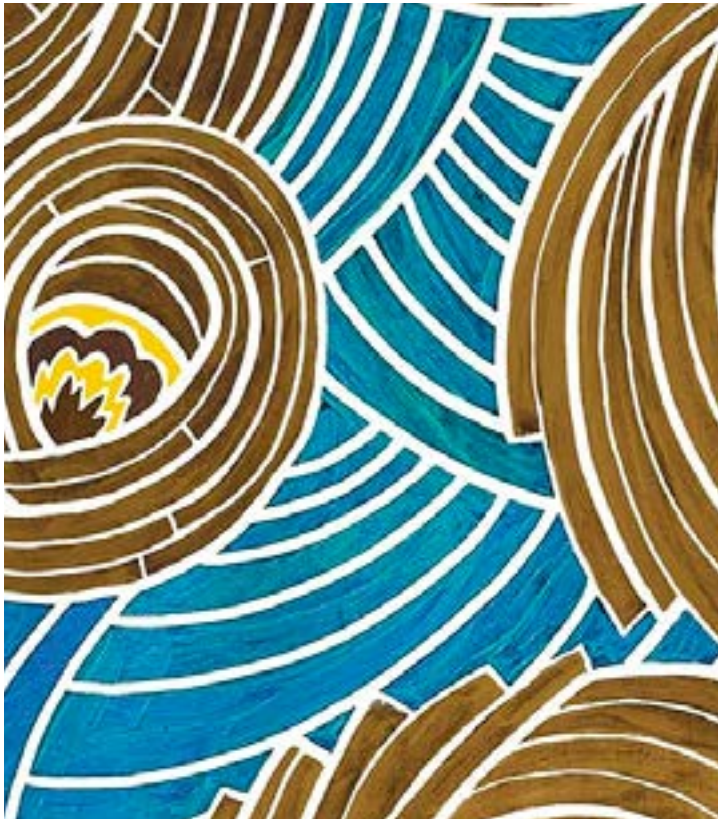
9N874 CW 002



9N874 CW 003

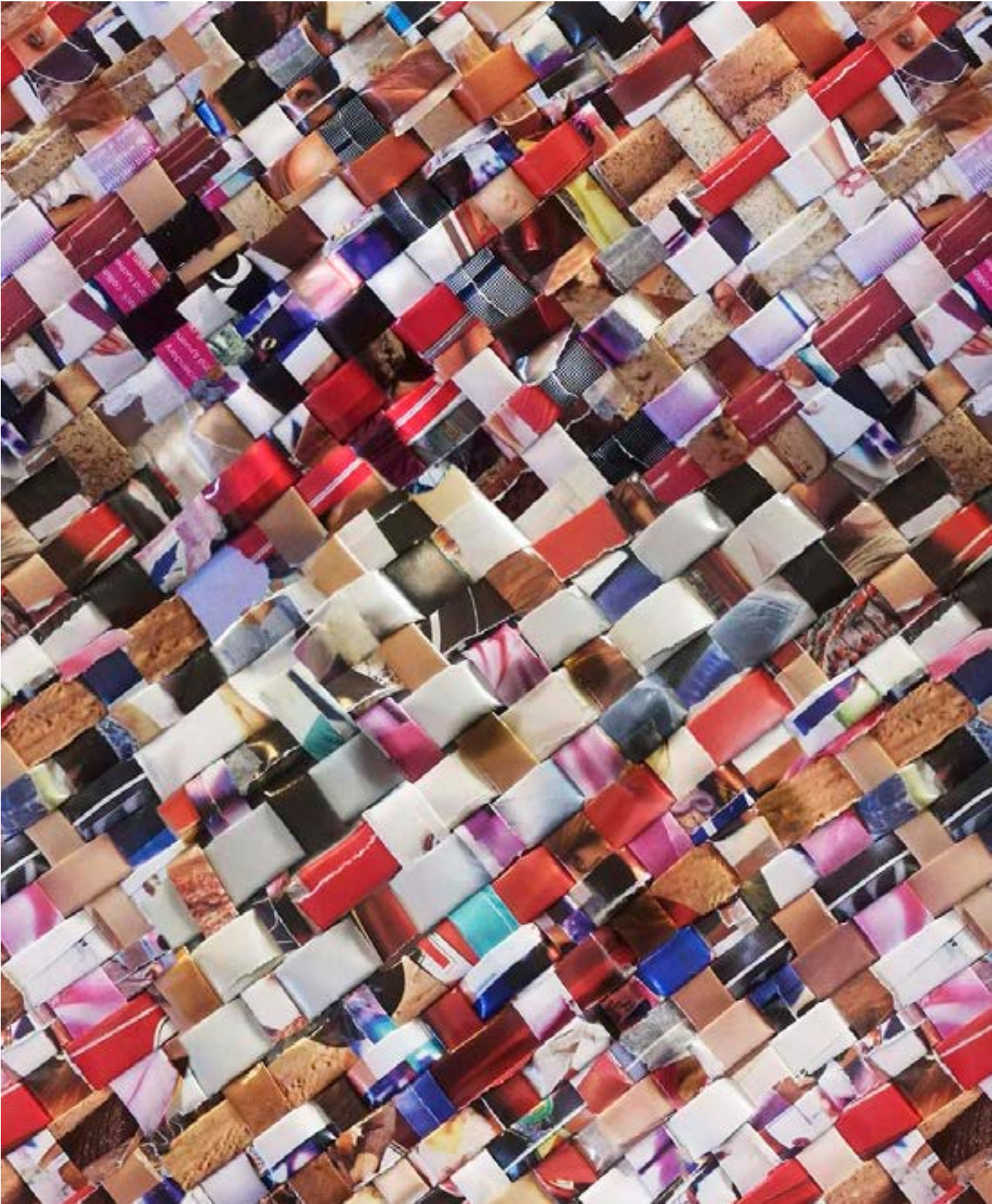


9N874 CW 004



9N874 CW 005

AND MORE



9N875 CW 001

WE DECLINE ANY RESPONSIBILITY FOR  
POSSIBLE COLOR DIFFERENCES IN PRODUCTION



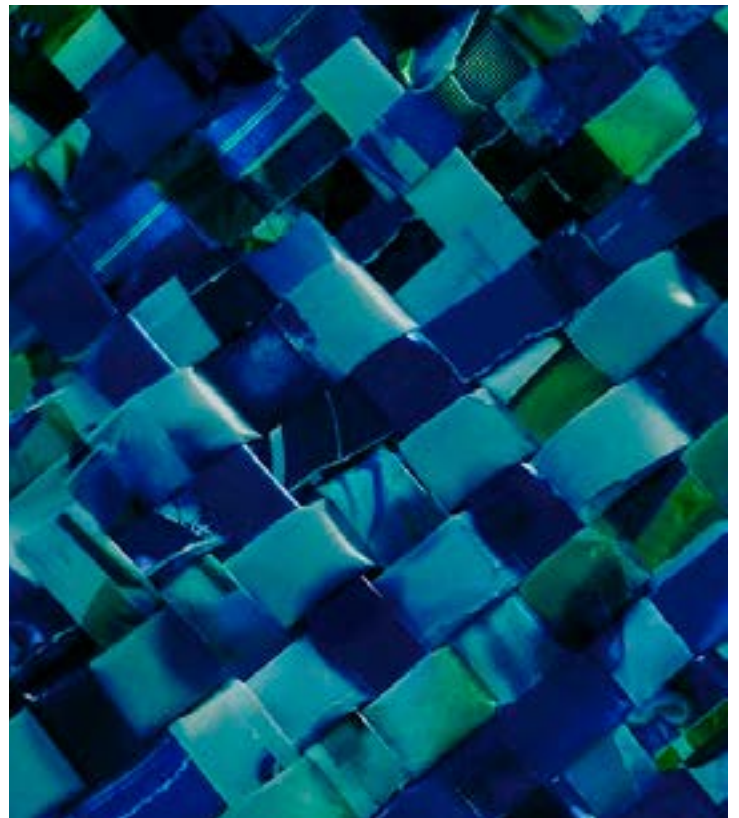
9N875 CW 002



9N875 CW 003



9N875 CW 004



9N875 CW 005

# Decotrans®

## Art Digital

### Technical Data Sheet

Date 07.05.2021

#### **PRODUCT DESCRIPTION**

Transparent PET film printed with ink-jet technology intended for the decoration of leather, eco-leather and synthetic substrates (e.g. PVC).

#### **PRODUCT SPECIFICATIONS**

Nominal Thickness of PET film: 19 µm  
Nominal Weight of PET film: 24-29 g/m<sup>2</sup>  
Printing Height: up to 1600 mm  
Cardboard core Diameter: 70 mm  
Coil Diameter: up to 180 mm in standard cardboard package  
Coil Length: up to 250 mt in standard cardboard package

#### **PRINT**

Digital Ink-jet print on pre-treated Transparent PET film. All components are water based.

#### **TRANSFER PROCESS**

The product can be applied with a calender machine.

The parameters standardized by Sublitex in the Quality Control and Printing Check processes are reported in the table below:

Calender Parameters		
Temperature (°C)	Speed (m/min)	Pressure (bar)
130 - 140	3 - 5	20 - 30

It is advisable to check and confirm the operational parameters through experimental trials performed in the final production conditions at the customer's plant, according to the specific transfer machine and the final substrate involved.



Cap. Soc. Euro 1.000.000 i.v.  
Nr. R.E.A. CN-313093  
Cod. Fisc. / P.I. IT  
03737080048

Società con unico socio

Società soggetta all'attività di direzione e coordinamento di Miroglio S.p.A.








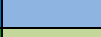








Sublitex s.r.l.  
Strada Tagliata 25  
12051 Alba CN - Italy  
sublitex@miroglio.com  
t. (+39) 0173 298741  
f. (+39) 0173 298220

Sede legale:  
Via S. Barbara 11  
12051 Alba CN - Italy

sublitex.com

## QUALITY CONTROL

Every batch is checked according to the internal procedure to assure the compliance with the production reference, in particular with comparative tests regarding printing quality and transfer efficiency.

LIGHT FASTNESS OF PIGMENTS				
Inks	Print Covering		Light fastness*	
	100%	10%	ISO 105/B02 100%/10%	
Yellow			7-8	6
Magenta			7-8	6-7
Red			7	6-7
Cyan			7	6-7
Green			7	6-7
Violet			8	7-8
Black			8	7-8
Grey			8	7-8

### \*BLUE WOOL REFERENCE SET (MAX VALUE 8) ON PURE PIGMENTS

The actual light fastness of the final product is dependent on multiple factors, such as:

- Ink amount;
- Ink dilution;
- Finishing and subsequent processes.

The best printing condition are adjusted according to every design and colour in order to reach the best possible fastness in the finished product.

## STORAGE CONDITIONS

Keep the product in a dry environment away from heating sources

## SHELF LIFE

Six months in the above mentioned conditions.

## PACKAGING

The product is delivered in cardboard boxes.

*The information given above are disclosed by Sublitex without any obligations, and are believed to be accurate according to our knowledge.*

*Sublitex reserves the right of considering any future review or modification, according to the technological evolution and manufacturing requirement.*

*Customer is advised to verify the given information, according to its own knowledge and production conditions.*

*Sublitex declines any responsibility for applications that have not followed the mentioned indications regarding the transfer process and storage, as well as for any finishing, post-treatment or subsequent process following the transfer phase.*



Cap. Soc. Euro 1.000.000 i.v.  
Nr. R.E.A. CN-313093  
Cod. Fisc. / P.I. IT  
03737080048

Società con unico socio  
Società soggetta all'attività di  
direzione e coordinamento  
di Miroglio S.p.A.

Sublitex s.r.l.  
Strada Tagliata 25  
12051 Alba CN - Italy  
sublitex@miroglio.com  
t. (+39) 0173 298741  
f. (+39) 0173 298220

Sede legale:  
Via S. Barbara 11  
12051 Alba CN - Italy  
sublitex.com





**SUBLITEX**  
The Innovative Printing

Strada Tagliata, 25 - 12051 Alba (CN) - Italy

Tel. +39 0173 298741  
Fax +39 0173 298220  
[sublitex@miroglio.com](mailto:sublitex@miroglio.com)  
[www.sublitex.com](http://www.sublitex.com)