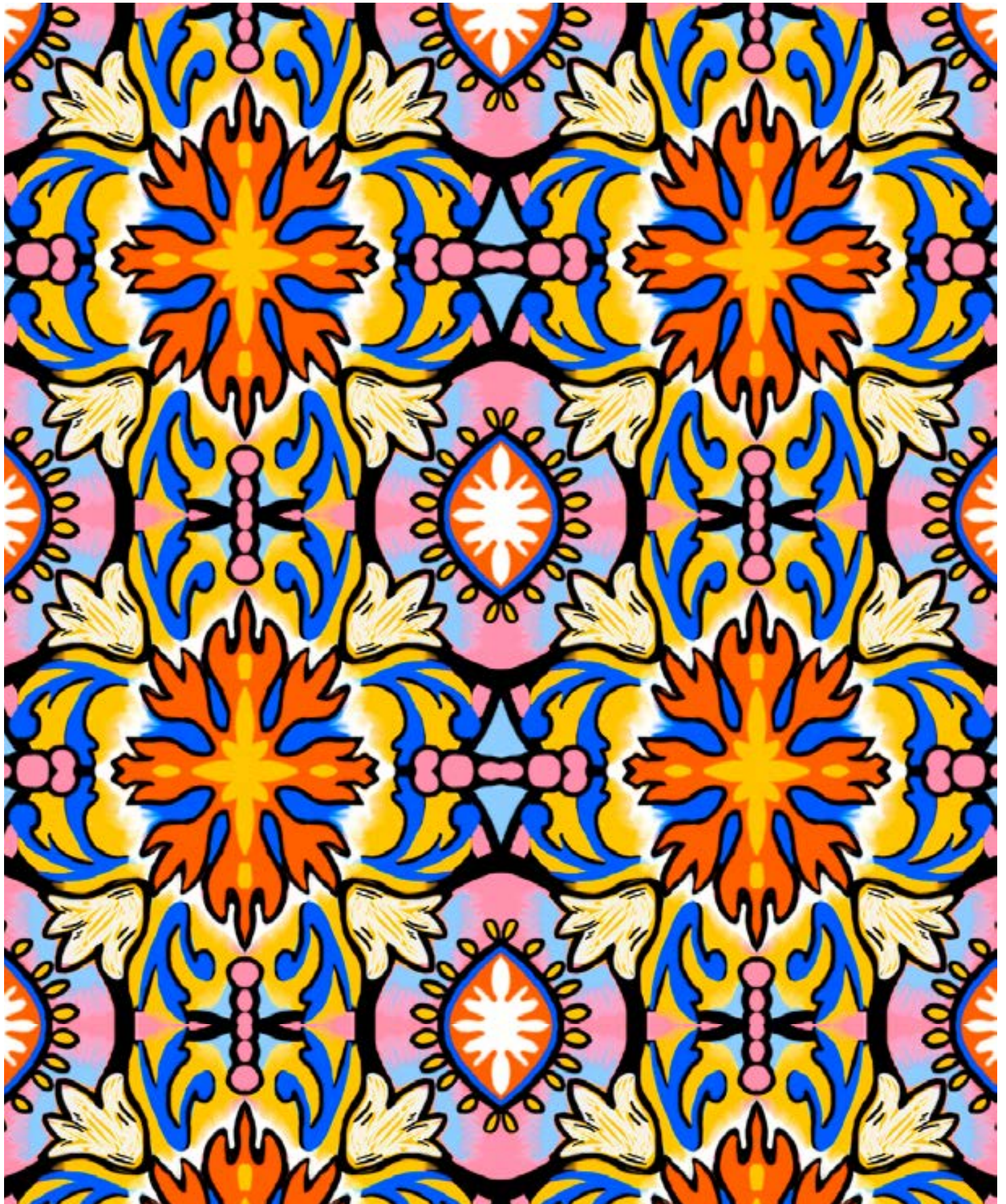




SUBLITEX
The Innovative Printing

Decotrans[®]
Art Digitale





9N045 CW 001

WE DECLINE ANY RESPONSIBILITY FOR
POSSIBLE COLOR DIFFERENCES IN PRODUCTION



9N045 CW 002



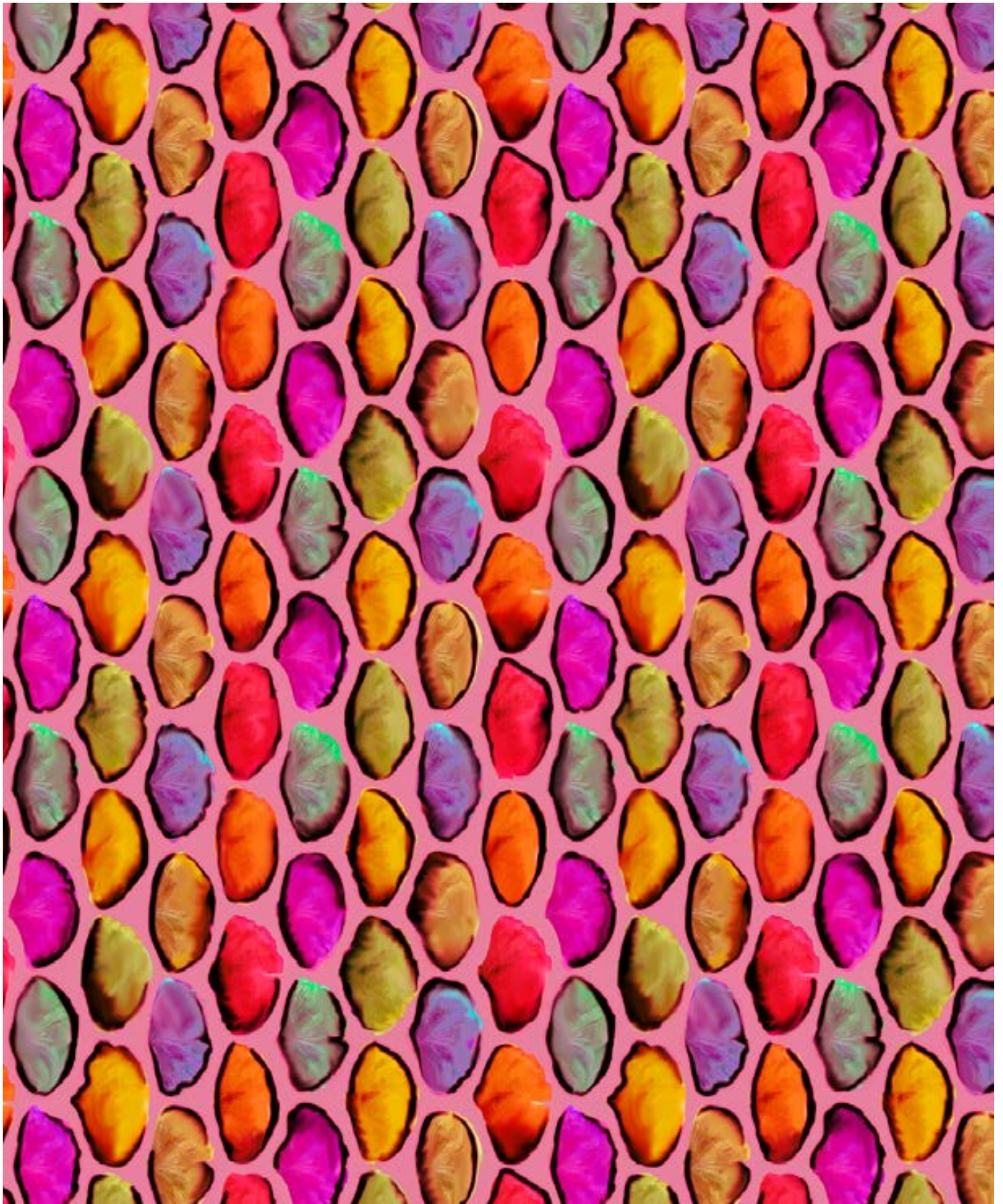
9N045 CW 003



9N045 CW 004



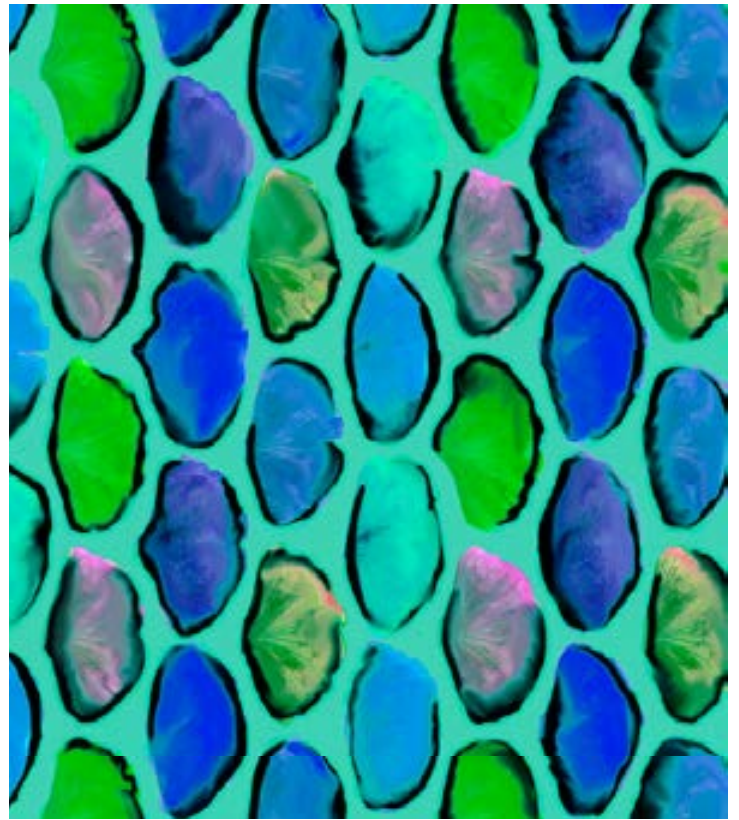
9N045 CW 005



9N046 CW 001



9N046 CW 002



9N046 CW 003



9N046 CW 004



9N046 CW 005



9N050 CW 001

WE DECLINE ANY RESPONSIBILITY FOR
POSSIBLE COLOR DIFFERENCES IN PRODUCTION



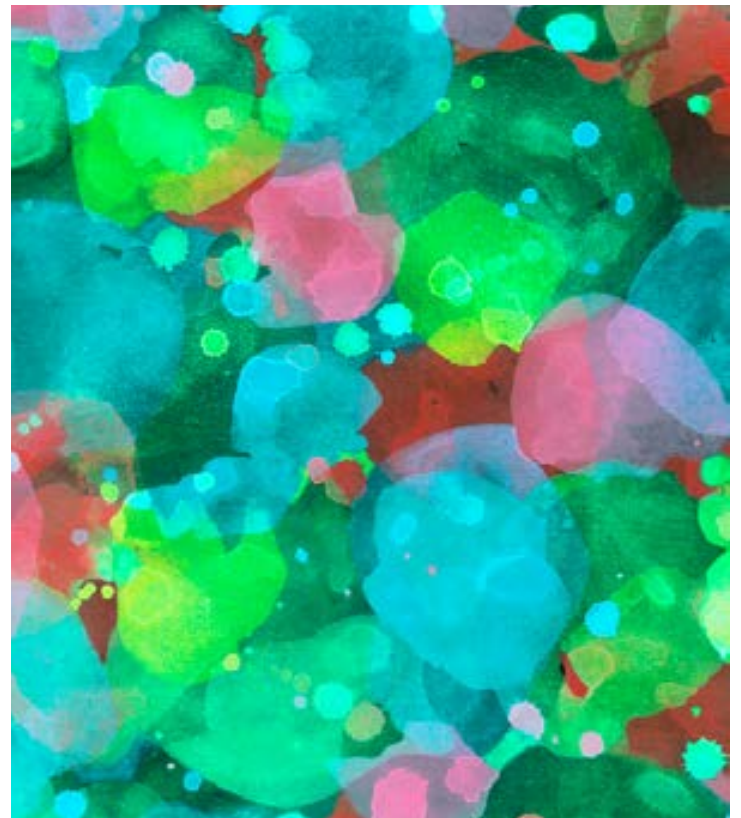
9N050 CW 002



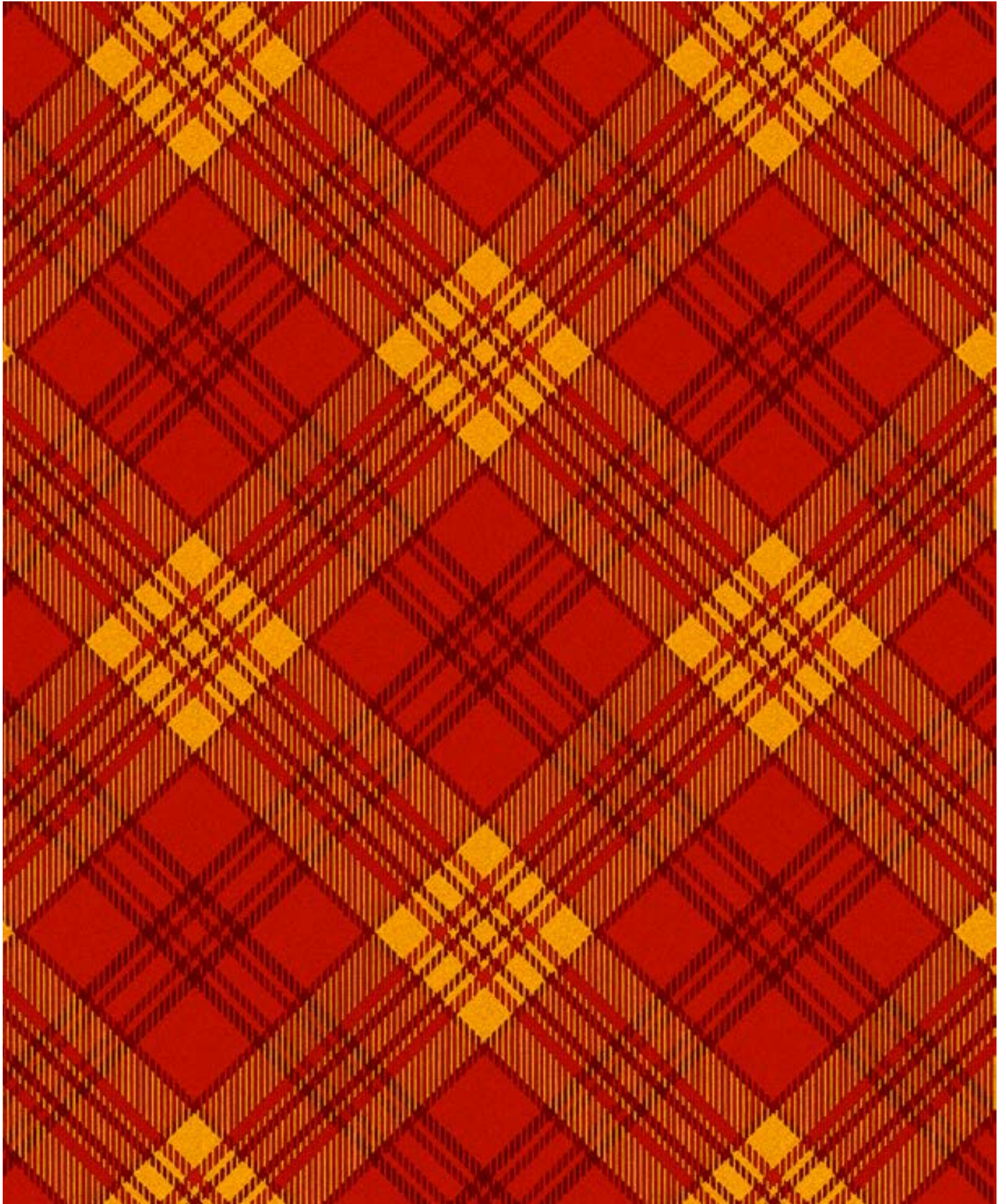
9N050 CW 003



9N050 CW 004



9N050 CW 005



9N051 CW 001

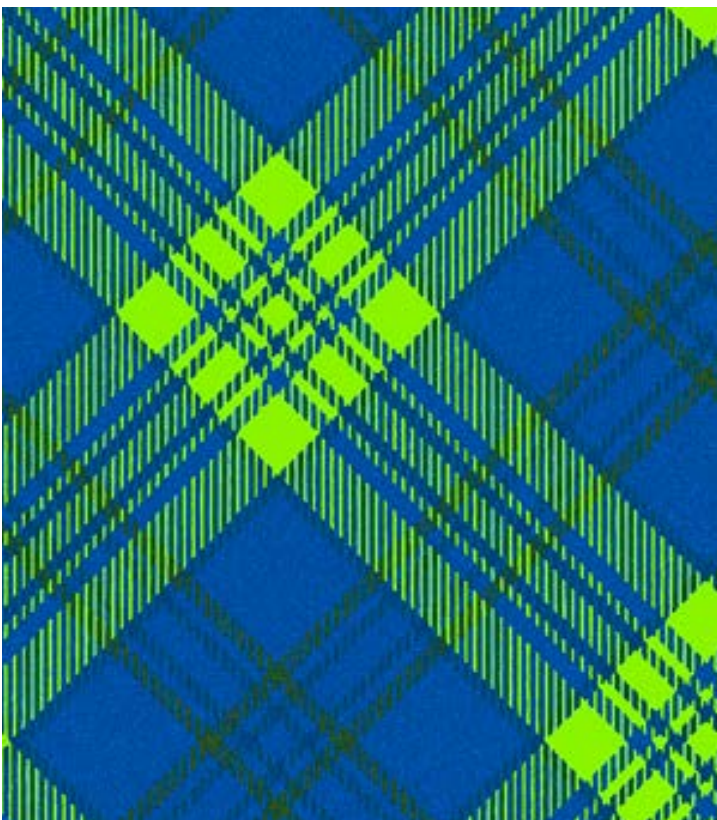
WE DECLINE ANY RESPONSIBILITY FOR
POSSIBLE COLOR DIFFERENCES IN PRODUCTION



9N051 CW 002



9N051 CW 003



9N051 CW 004



9N051 CW 005

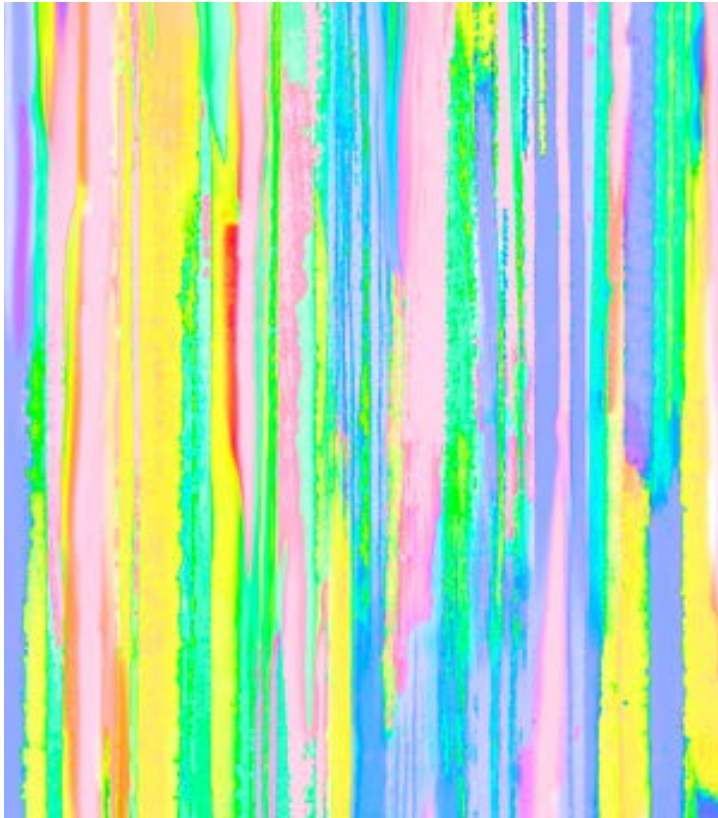


9N052 CW 001

WE DECLINE ANY RESPONSIBILITY FOR POSSIBLE COLOR DIFFERENCES IN PRODUCTION



9N052 CW 002



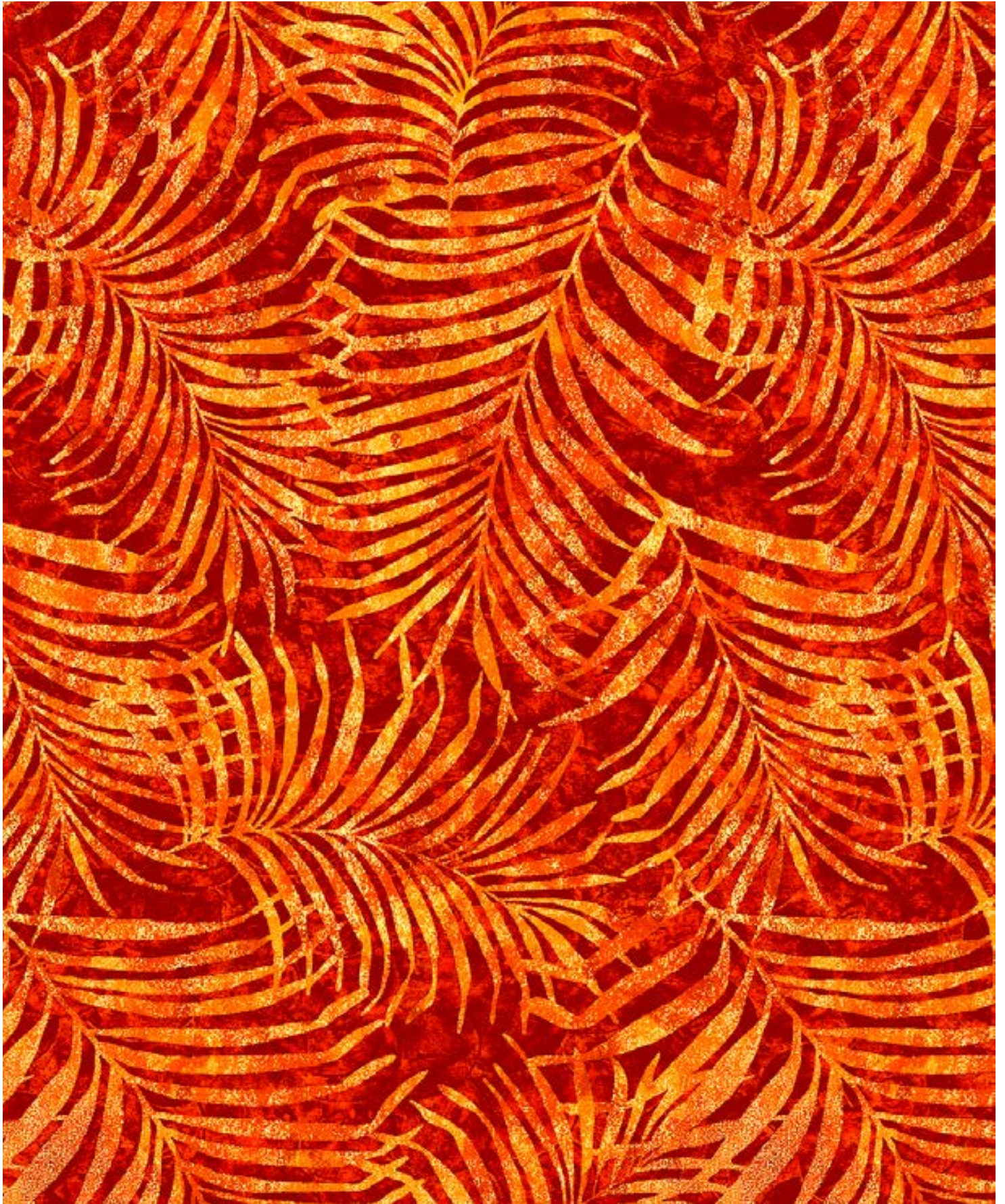
9N052 CW 003



9N052 CW 004



9N052 CW 005



9N053 CW 001

WE DECLINE ANY RESPONSIBILITY FOR
POSSIBLE COLOR DIFFERENCES IN PRODUCTION



9N053 CW 002



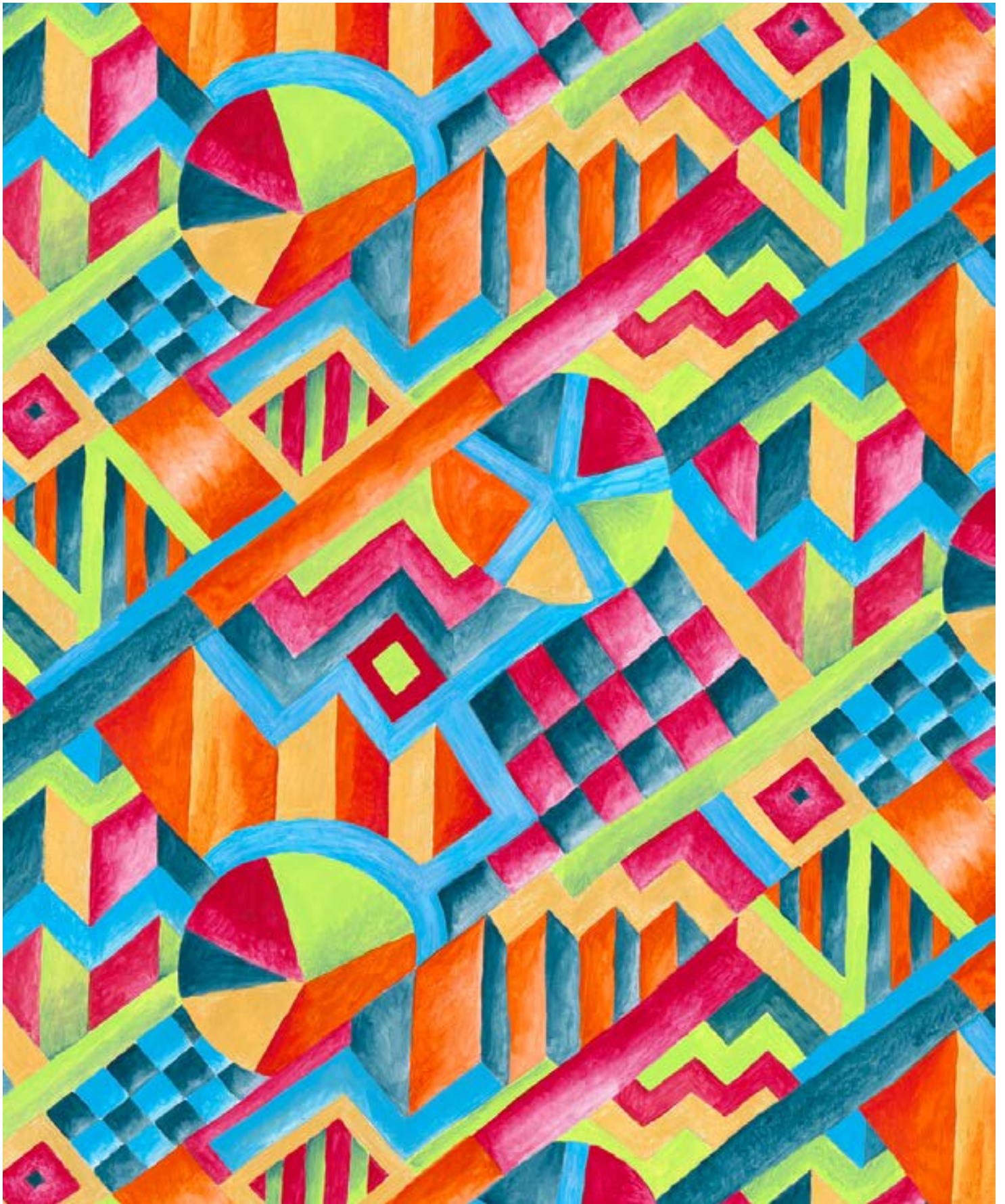
9N053 CW 003



9N053 CW 004



9N053 CW 005



9N054 CW 001

WE DECLINE ANY RESPONSIBILITY FOR
POSSIBLE COLOR DIFFERENCES IN PRODUCTION



9N054 CW 002



9N054 CW 003



9N054 CW 004



9N054 CW 005



9N055 CW 001

WE DECLINE ANY RESPONSIBILITY FOR
POSSIBLE COLOR DIFFERENCES IN PRODUCTION



9N055 CW 002



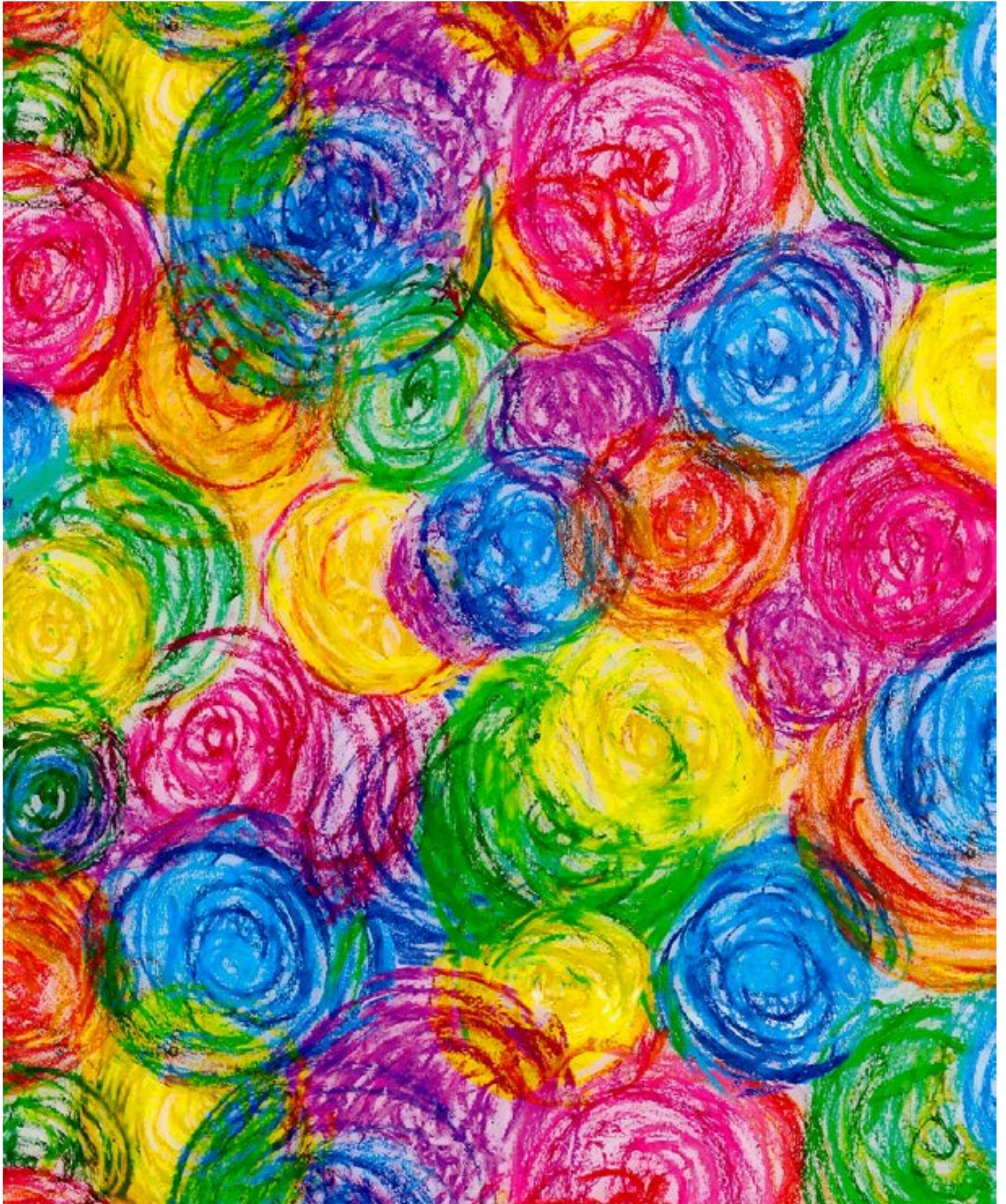
9N055 CW 003



9N055 CW 004



9N055 CW 005



9N056 CW 001

WE DECLINE ANY RESPONSIBILITY FOR
POSSIBLE COLOR DIFFERENCES IN PRODUCTION



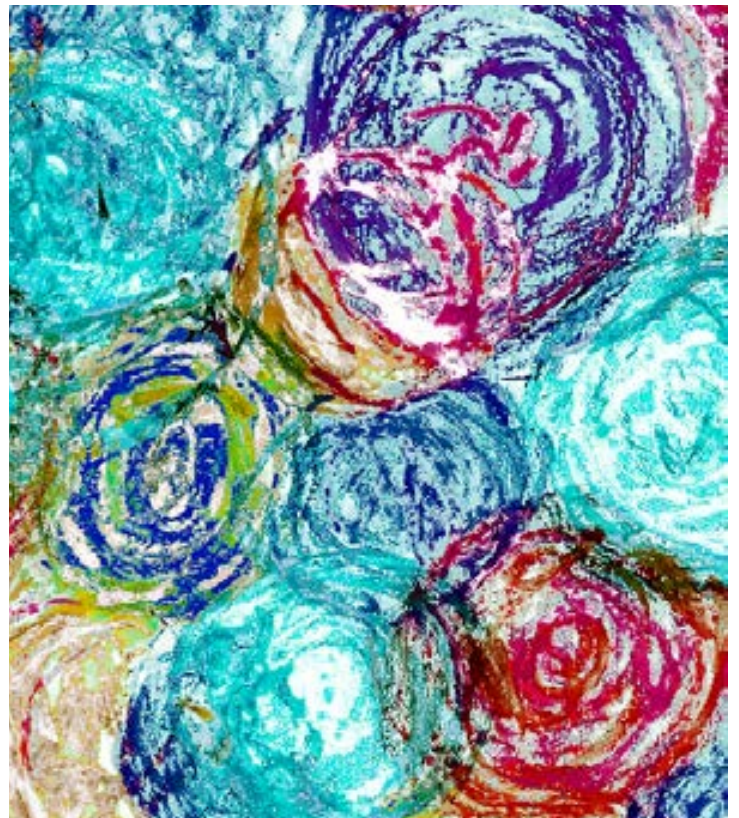
9N056 CW 002



9N056 CW 003



9N056 CW 004



9N056 CW 005



9N057 CW 001

WE DECLINE ANY RESPONSIBILITY FOR
POSSIBLE COLOR DIFFERENCES IN PRODUCTION



9N057 CW 002



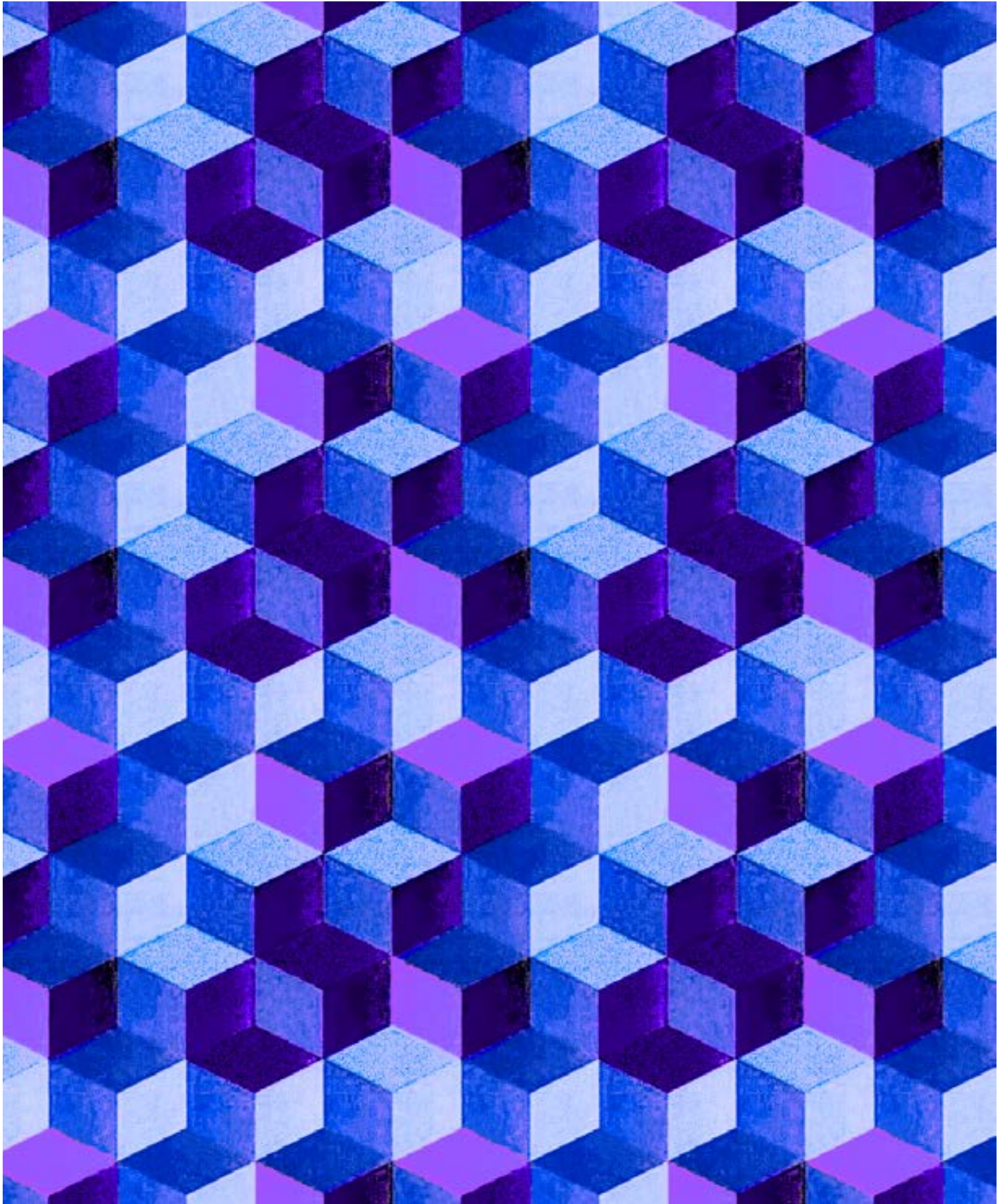
9N057 CW 003



9N057 CW 004



9N057 CW 005

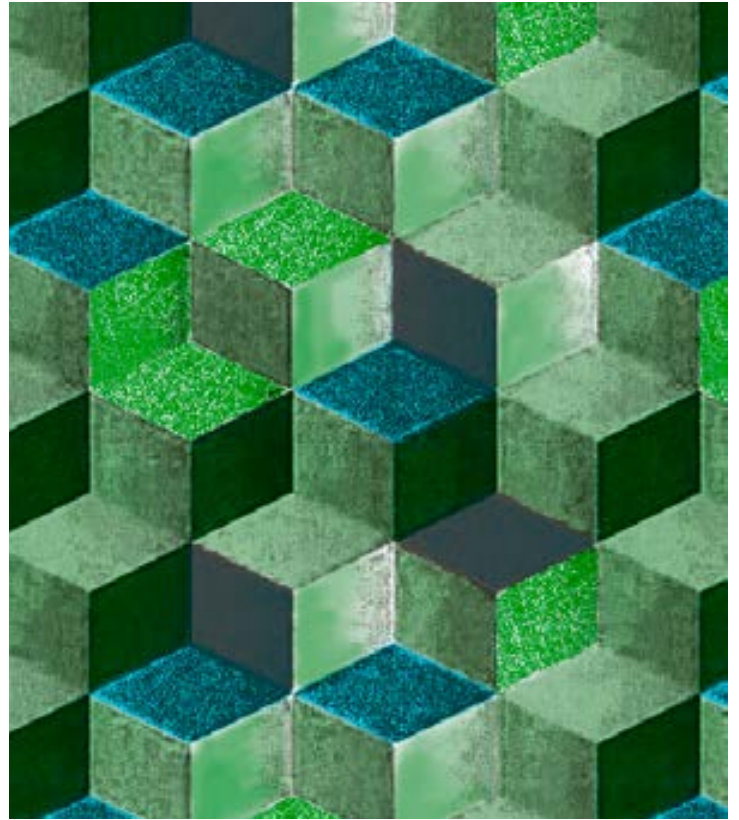


9N058 CW 001

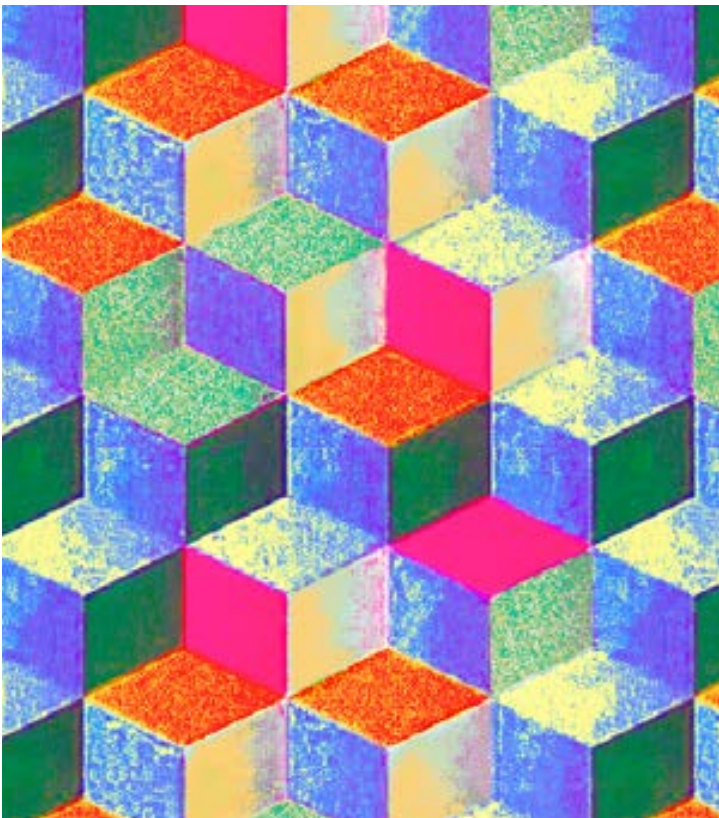
WE DECLINE ANY RESPONSIBILITY FOR
POSSIBLE COLOR DIFFERENCES IN PRODUCTION



9N058 CW 002



9N058 CW 003



9N058 CW 004



9N058 CW 005



9N059 CW 001

WE DECLINE ANY RESPONSIBILITY FOR
POSSIBLE COLOR DIFFERENCES IN PRODUCTION



9N059 CW 002



9N059 CW 003



9N059 CW 004



9N059 CW 005



9N060 CW 001

WE DECLINE ANY RESPONSIBILITY FOR
POSSIBLE COLOR DIFFERENCES IN PRODUCTION



9N060 CW 002



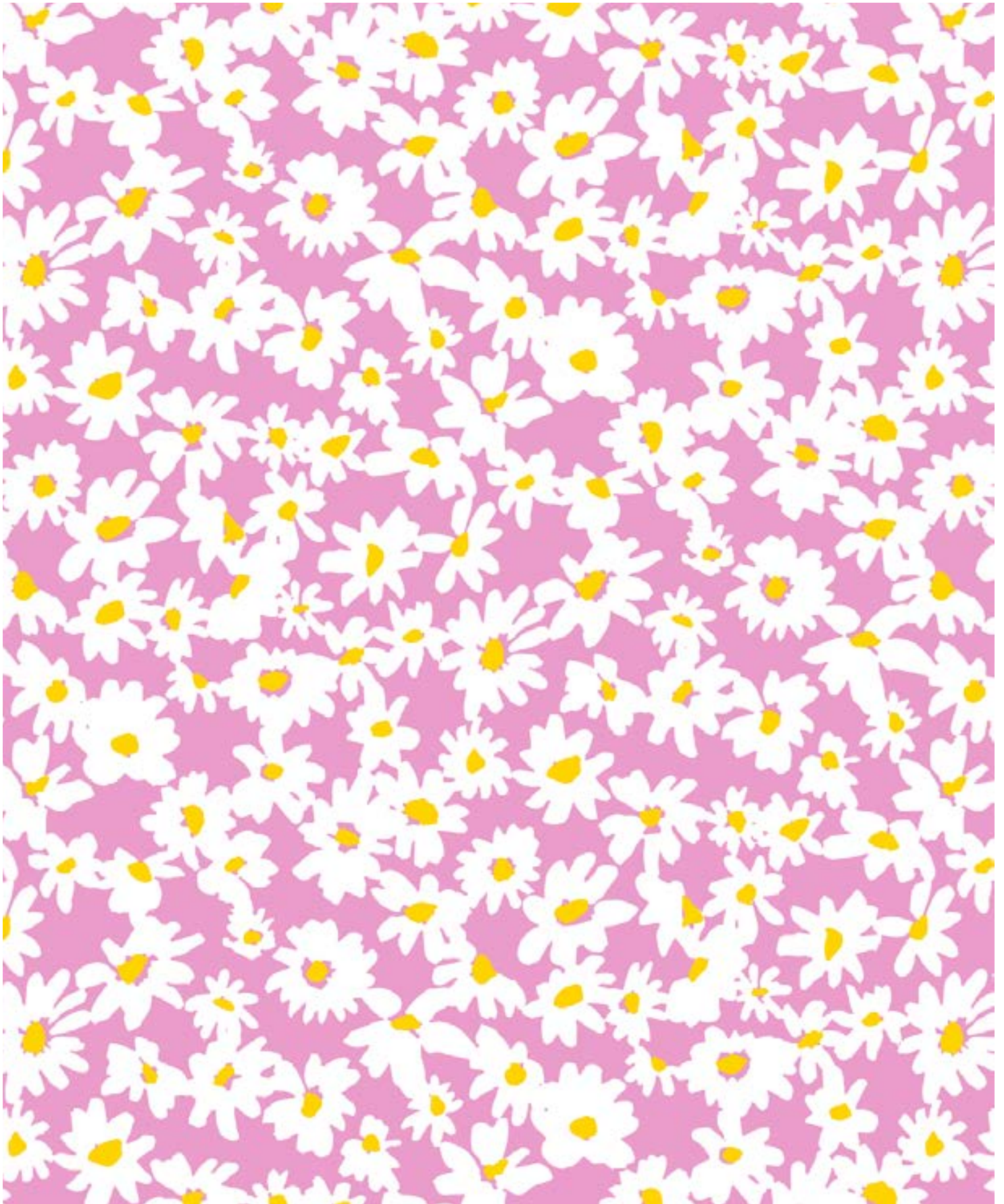
9N060 CW 003



9N060 CW 004



9N060 CW 005



9N061 CW 001

WE DECLINE ANY RESPONSIBILITY FOR
POSSIBLE COLOR DIFFERENCES IN PRODUCTION



9N061 CW 002



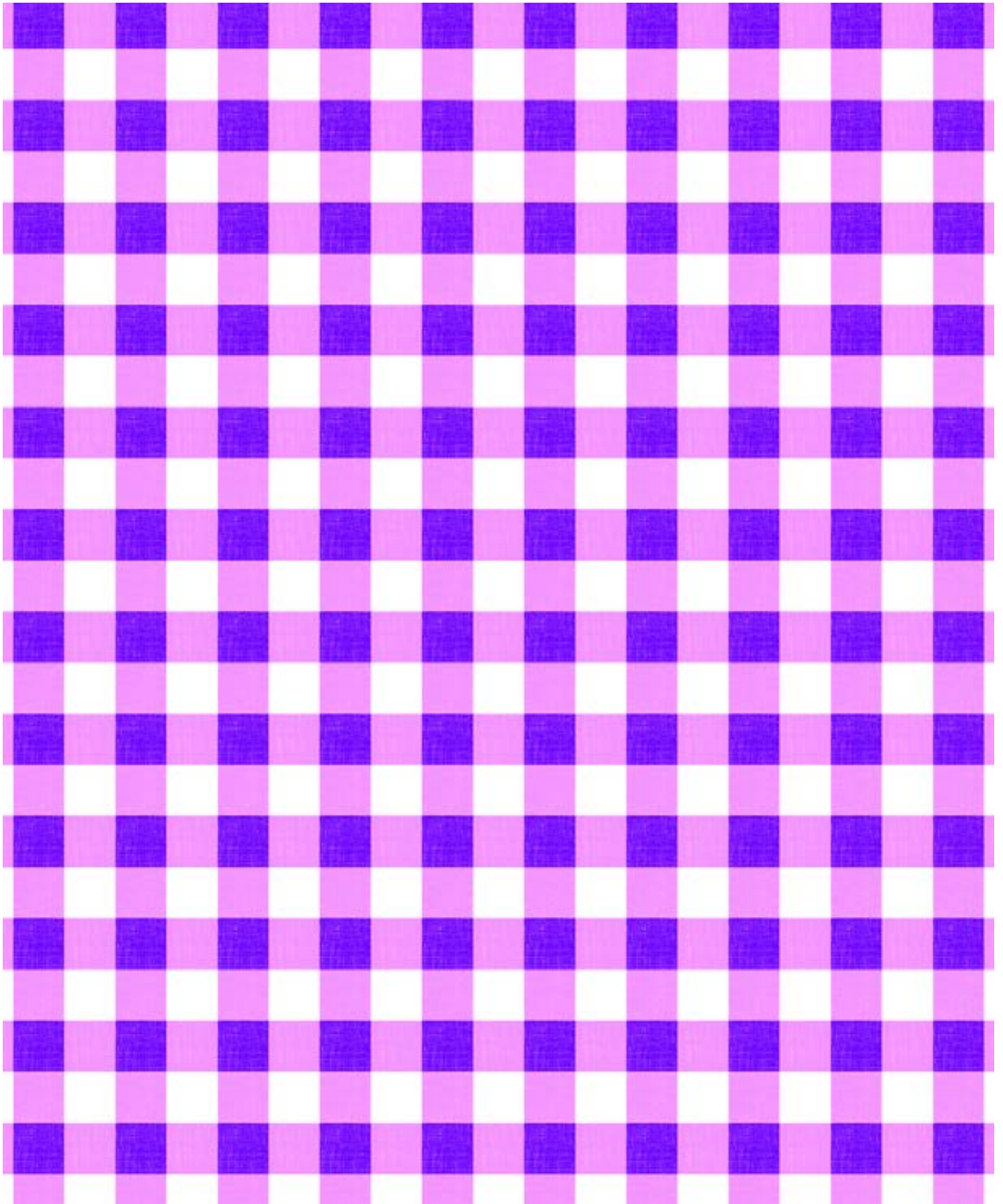
9N061 CW 003



9N061 CW 004

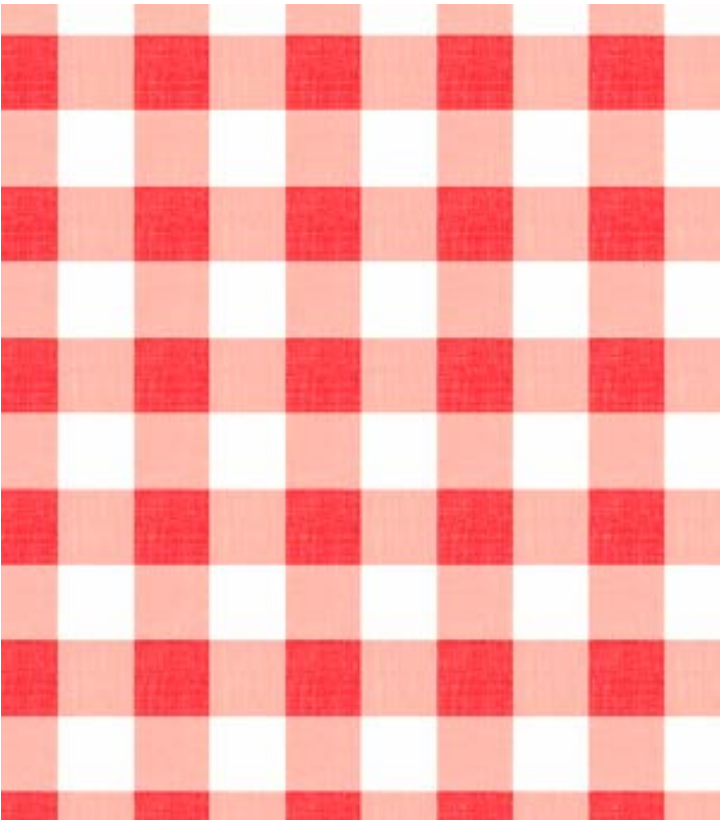


9N061 CW 005

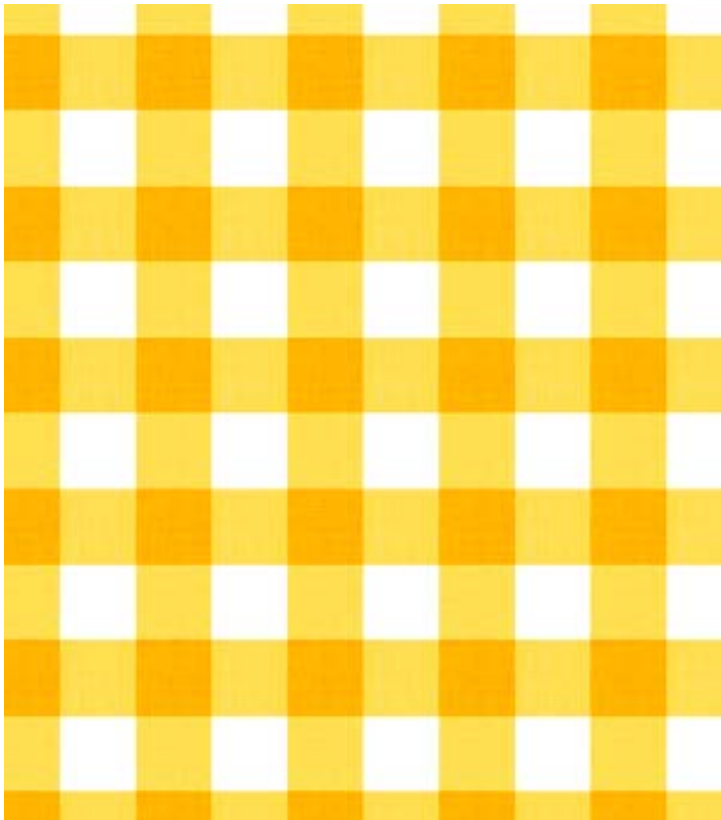


9N062 CW 001

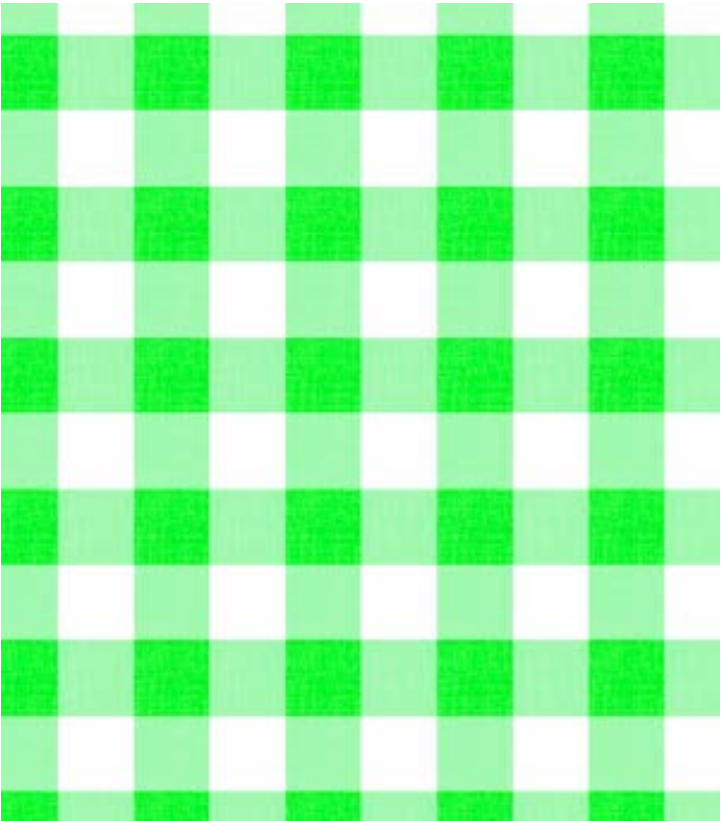
WE DECLINE ANY RESPONSIBILITY FOR POSSIBLE COLOR DIFFERENCES IN PRODUCTION



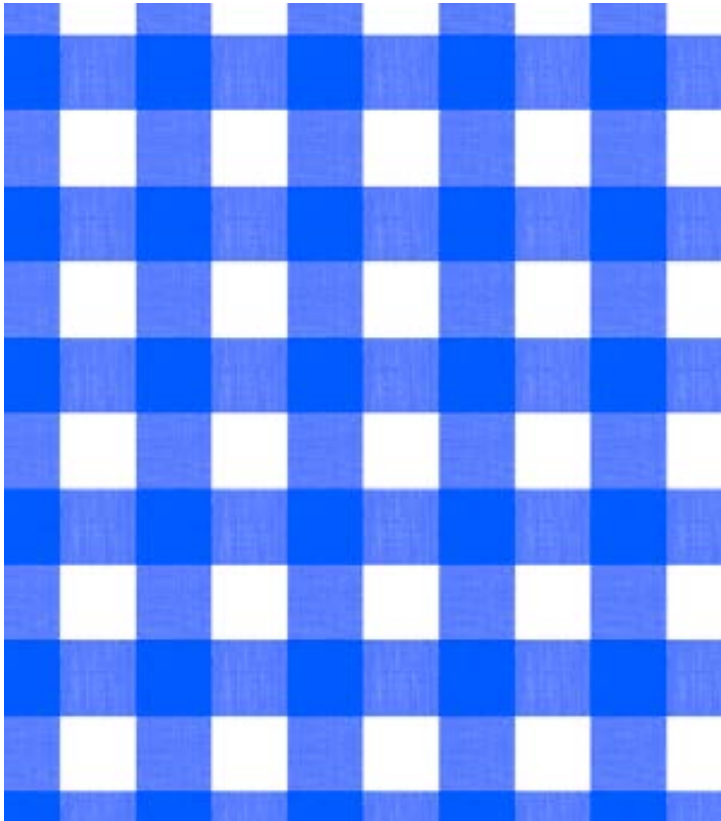
9N062 CW 002



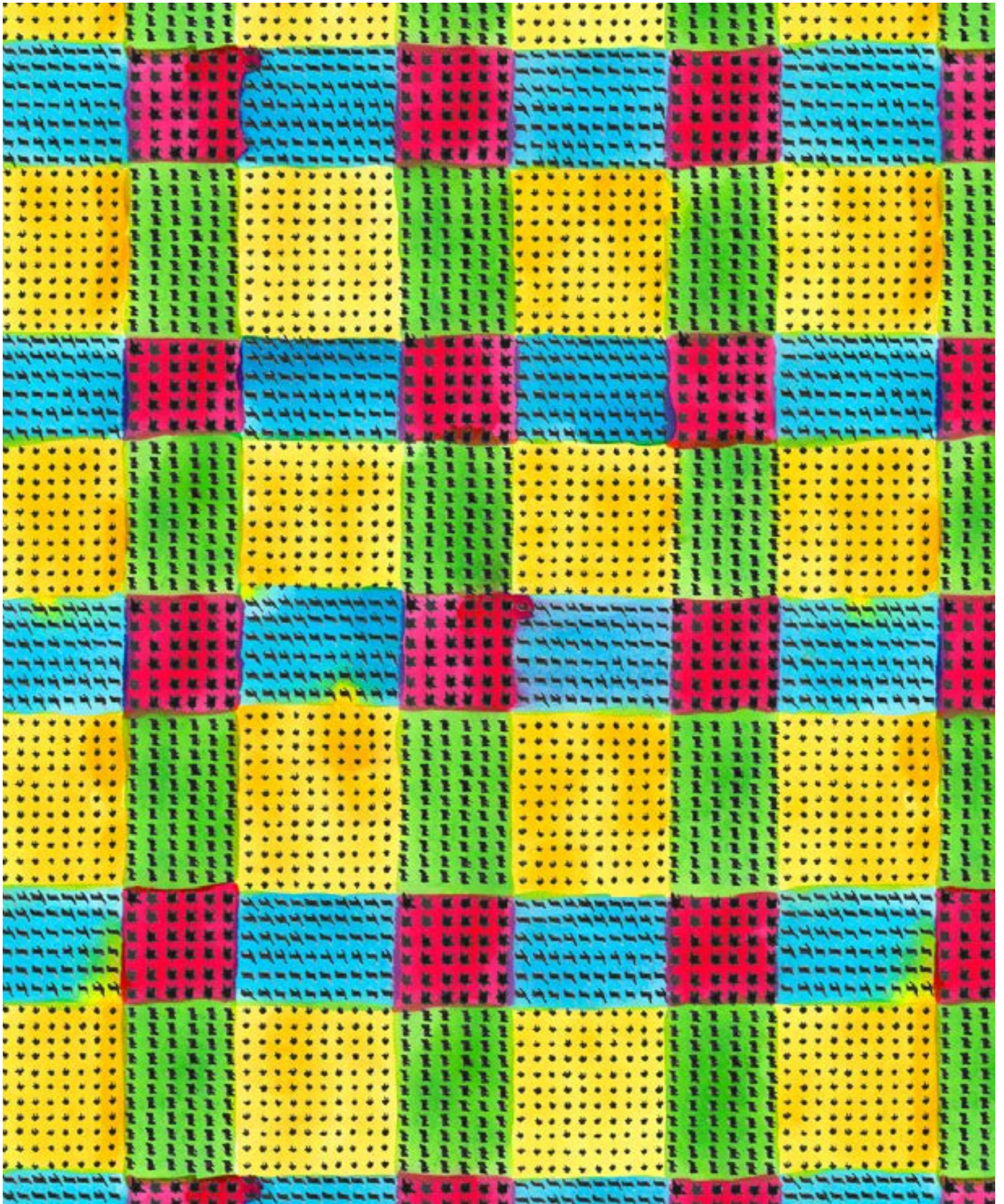
9N062 CW 003



9N062 CW 004

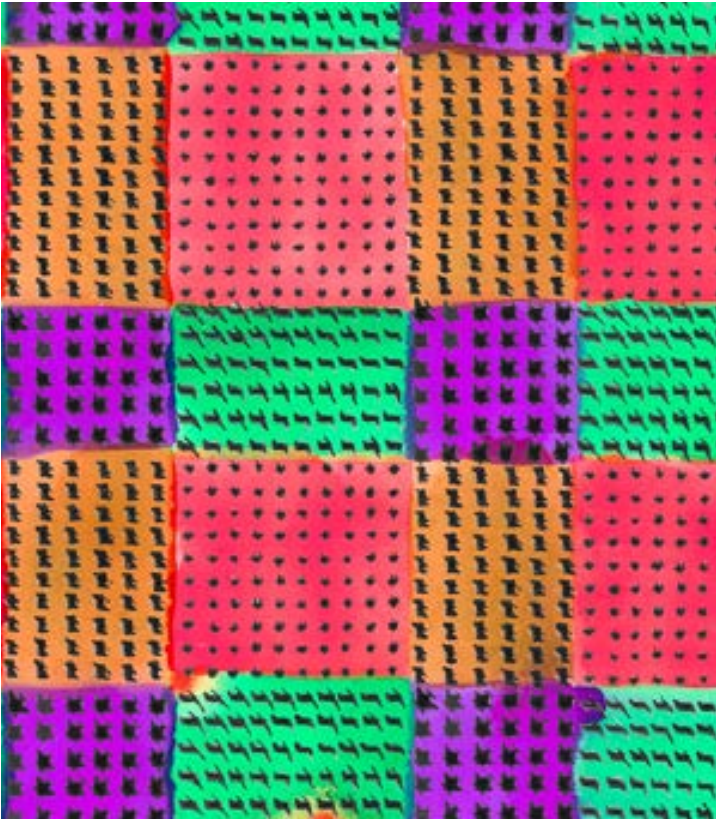


9N062 CW 005

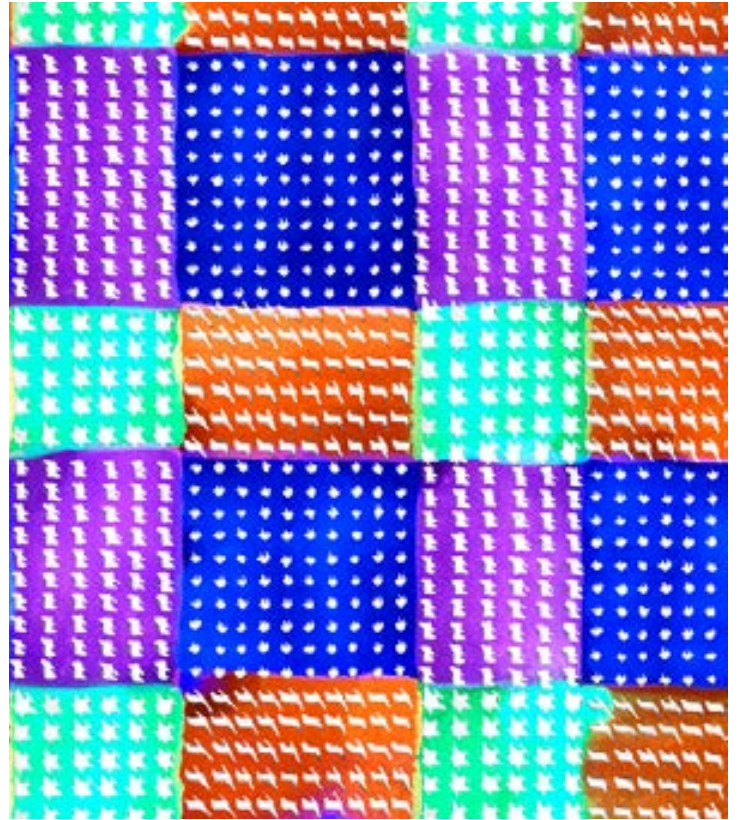


9N063 CW 001

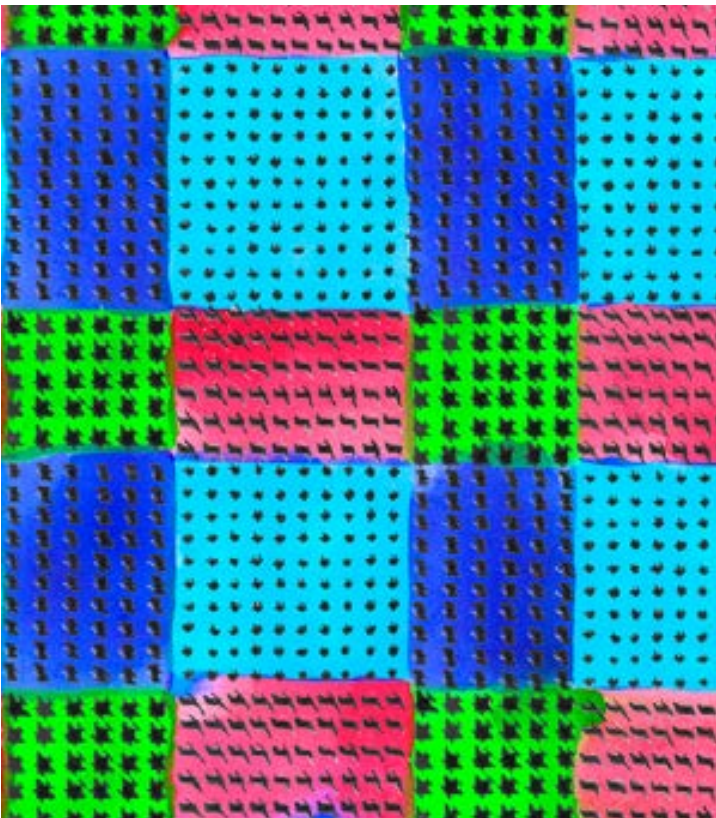
WE DECLINE ANY RESPONSIBILITY FOR
POSSIBLE COLOR DIFFERENCES IN PRODUCTION



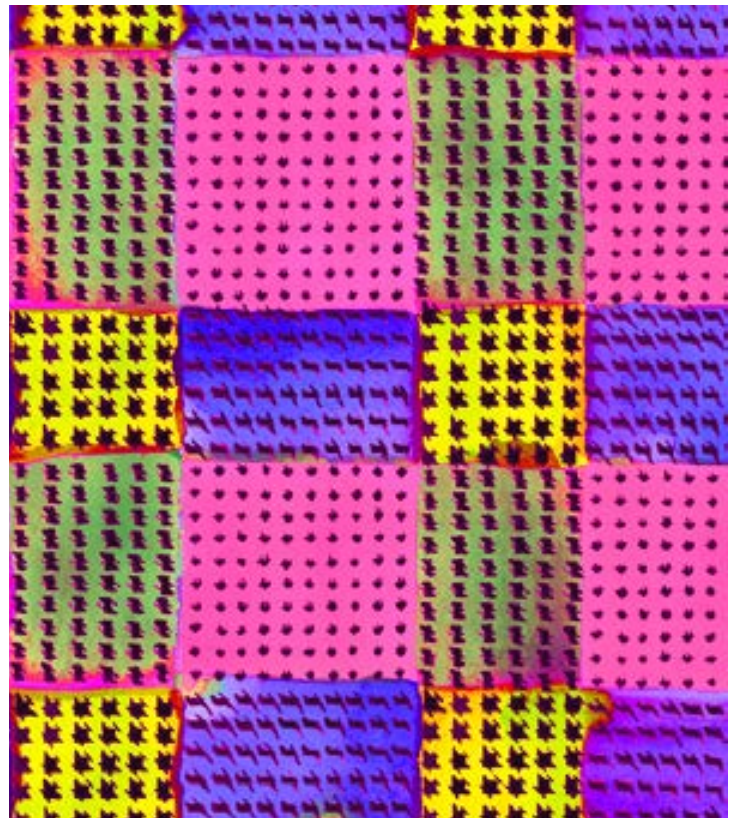
9N063 CW 002



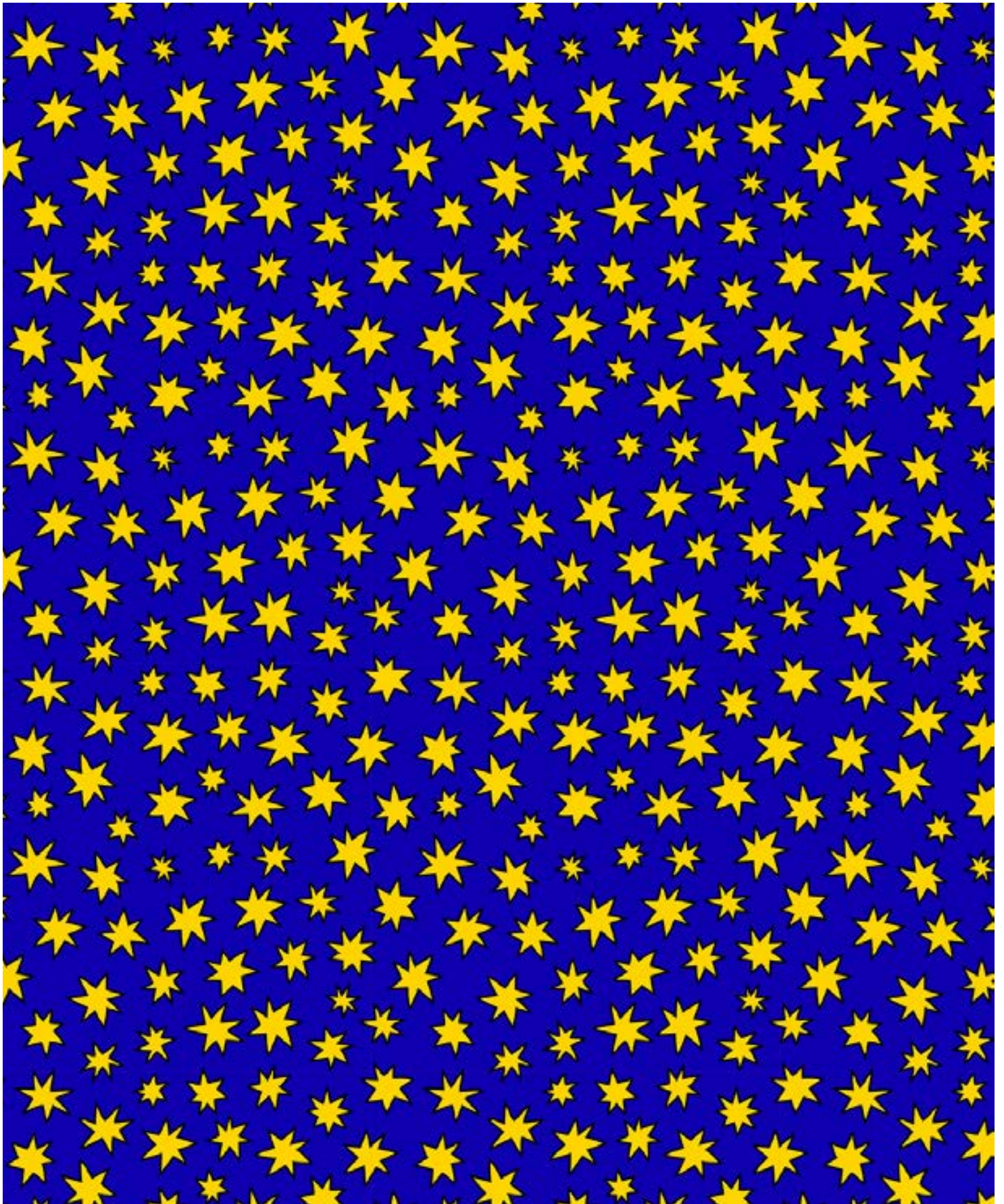
9N063 CW 003



9N063 CW 004

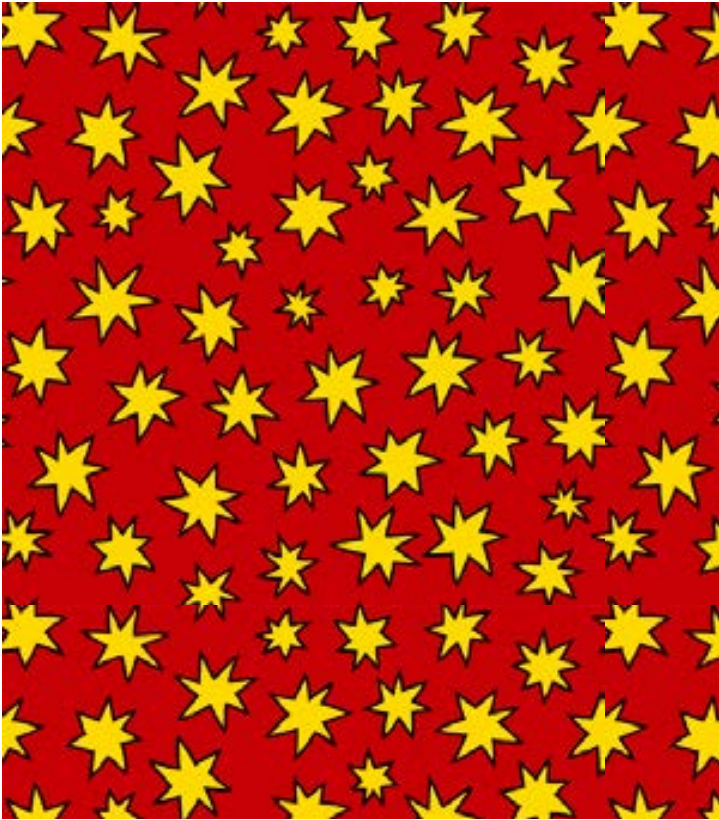


9N063 CW 005

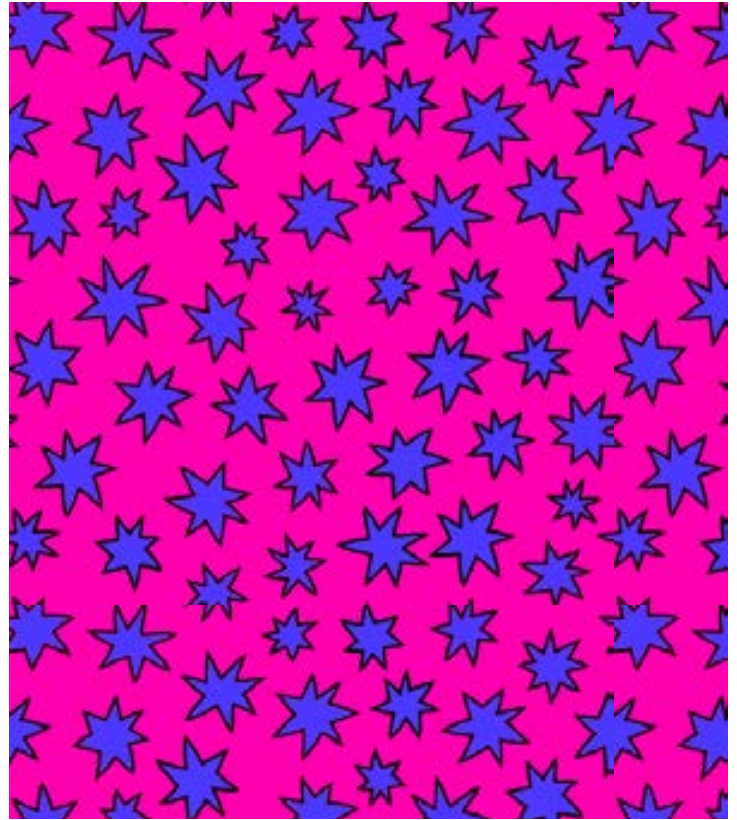


9N064 CW 001

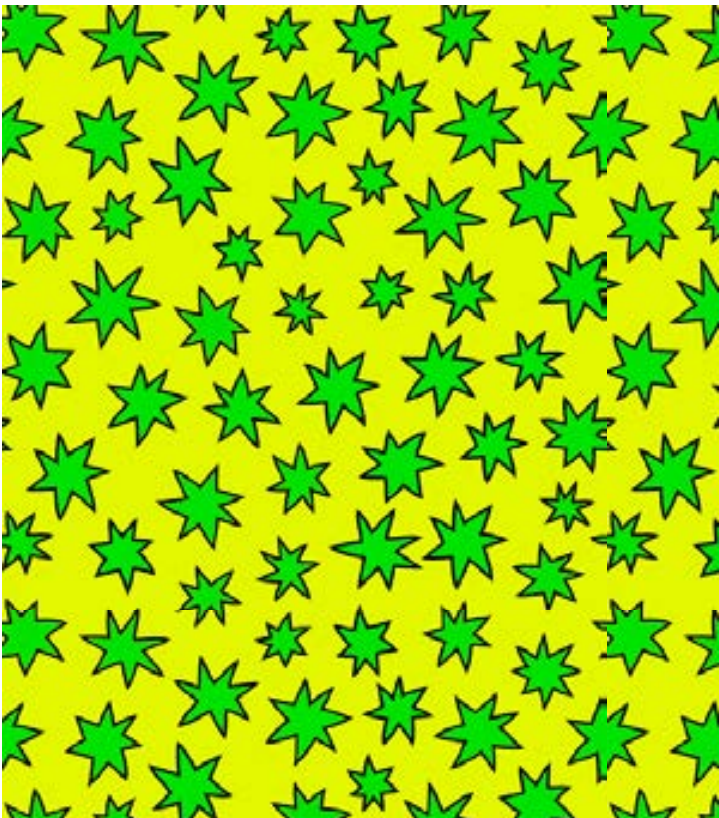
WE DECLINE ANY RESPONSIBILITY FOR
POSSIBLE COLOR DIFFERENCES IN PRODUCTION



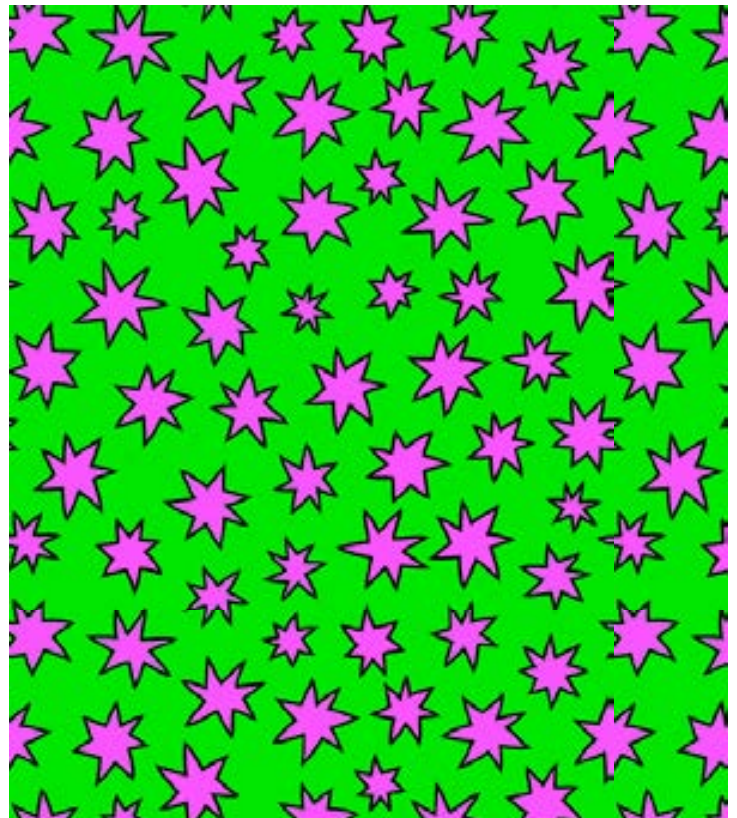
9N064 CW 002



9N064 CW 003



9N064 CW 004



9N064 CW 005

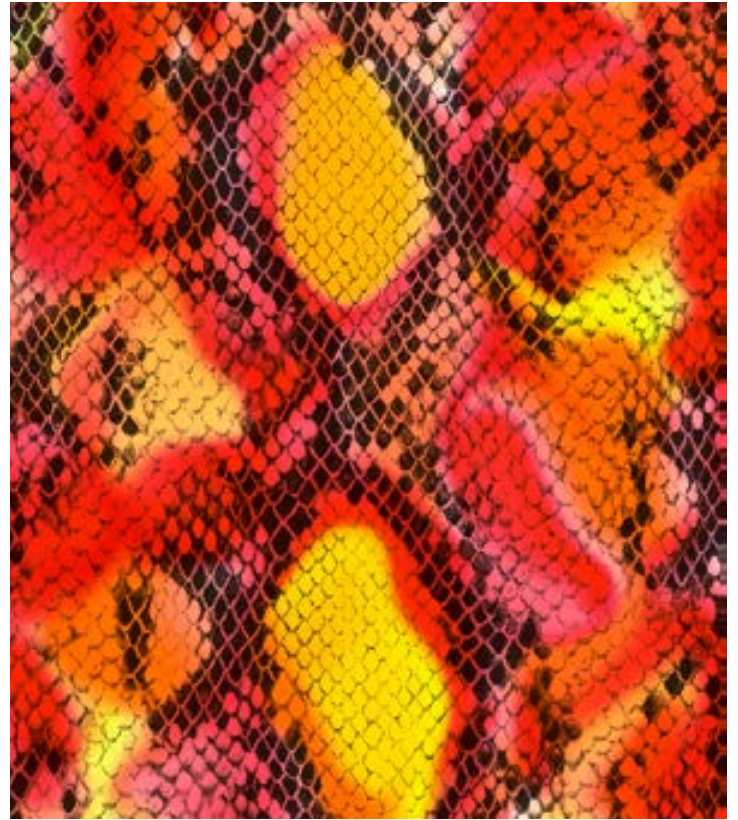


9N065 CW 001

WE DECLINE ANY RESPONSIBILITY FOR
POSSIBLE COLOR DIFFERENCES IN PRODUCTION



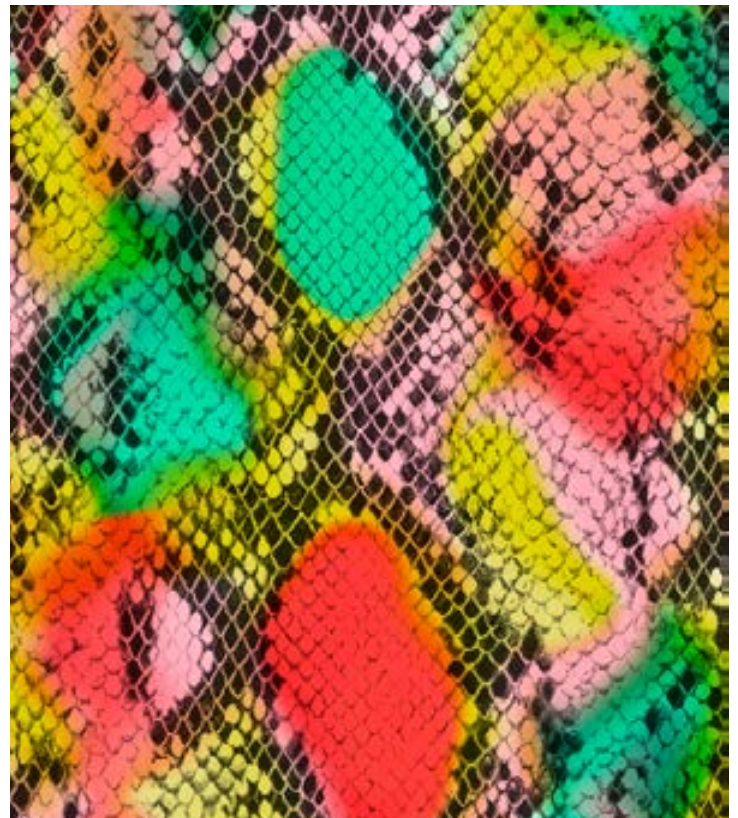
9N065 CW 002



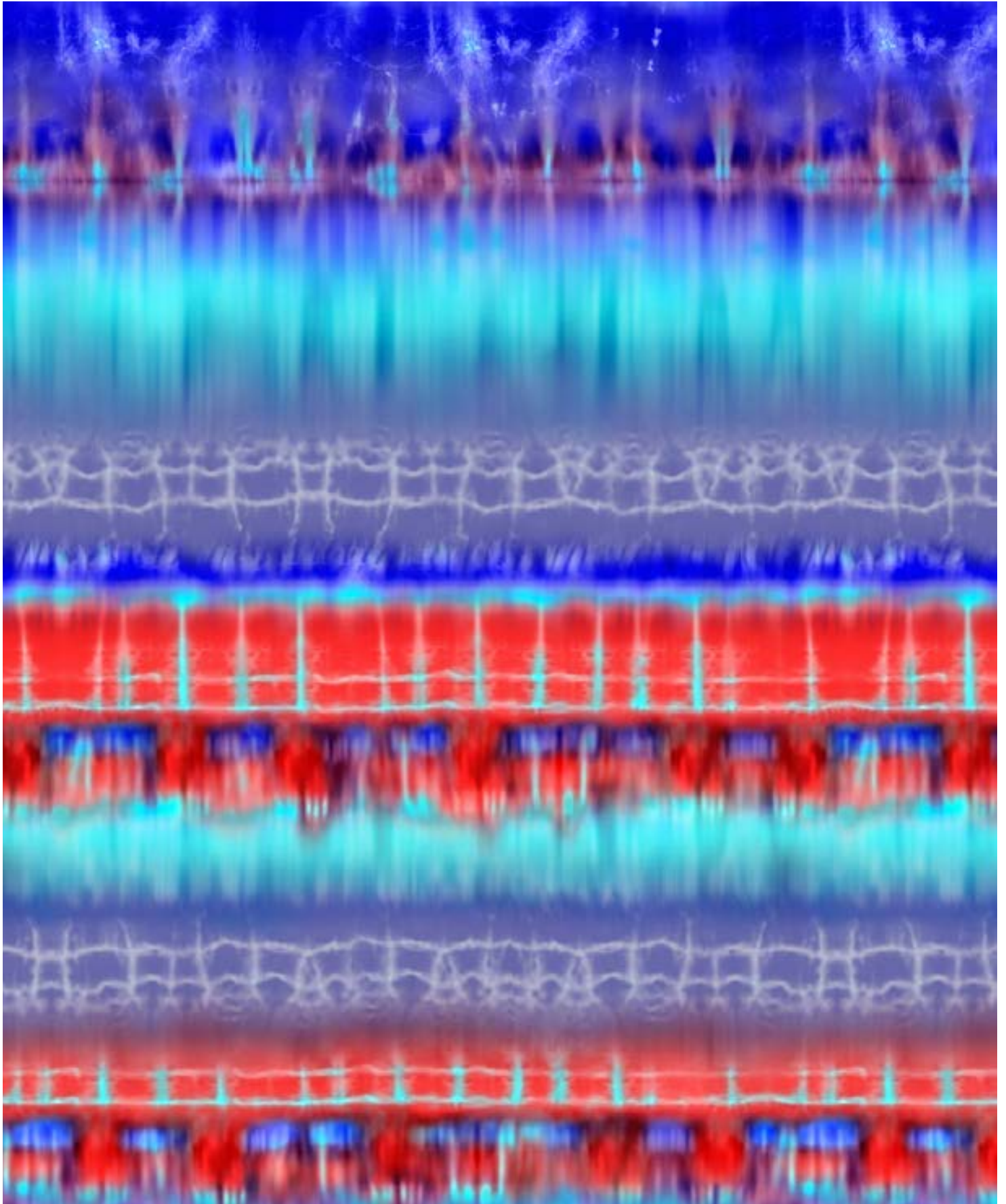
9N065 CW 003



9N065 CW 004

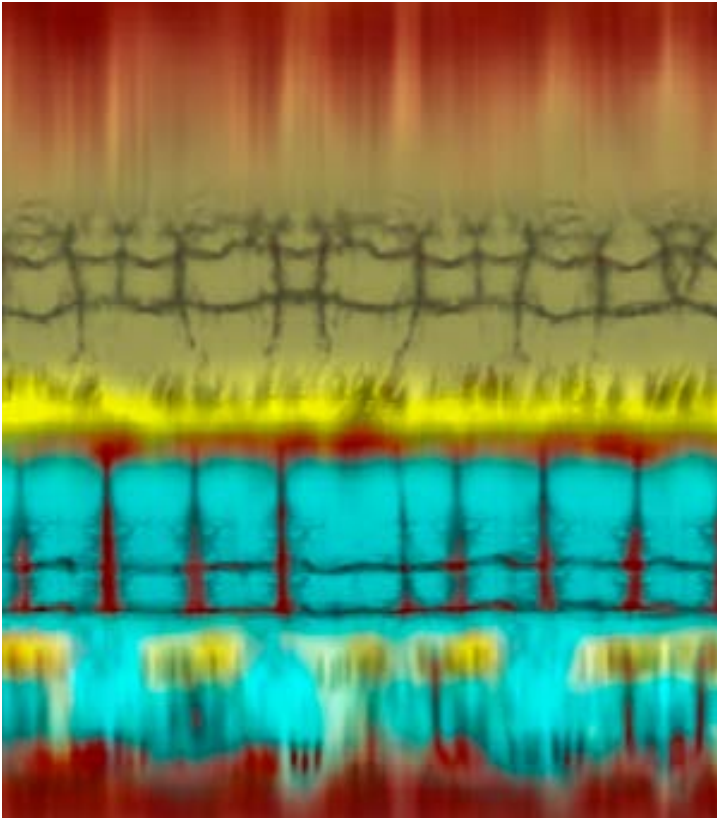


9N065 CW 005

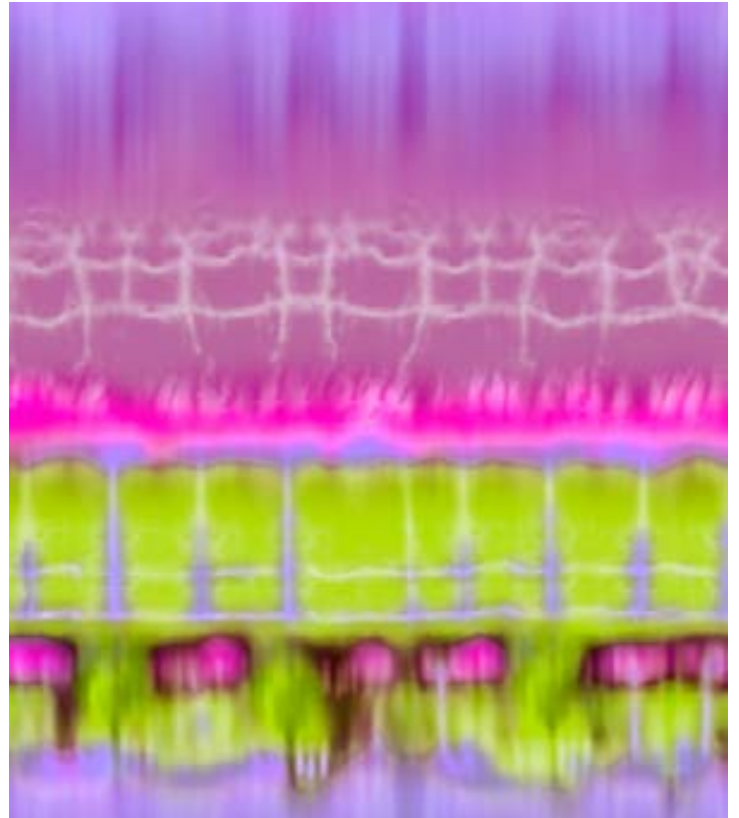


9N066 CW 001

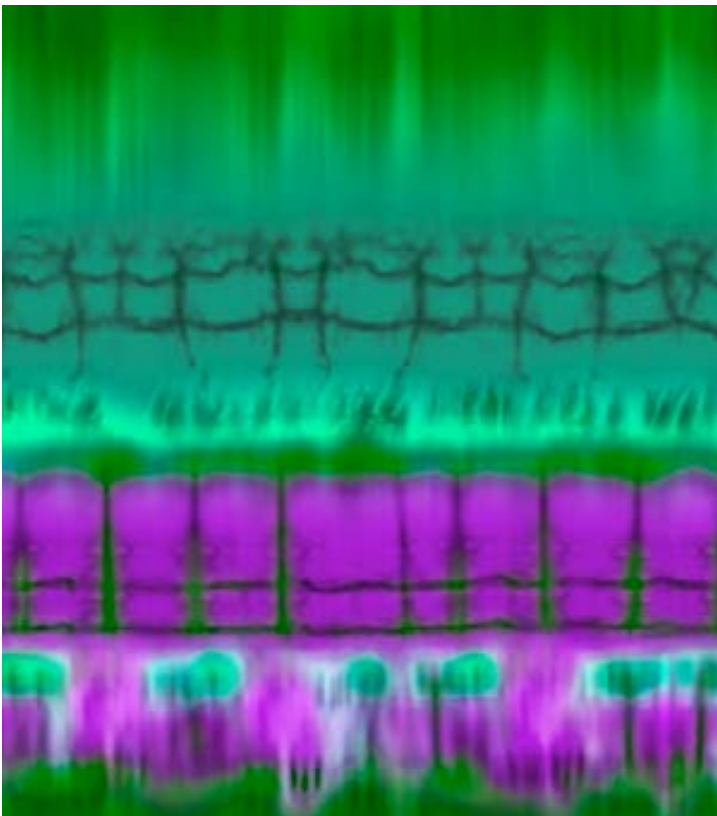
WE DECLINE ANY RESPONSIBILITY FOR
POSSIBLE COLOR DIFFERENCES IN PRODUCTION



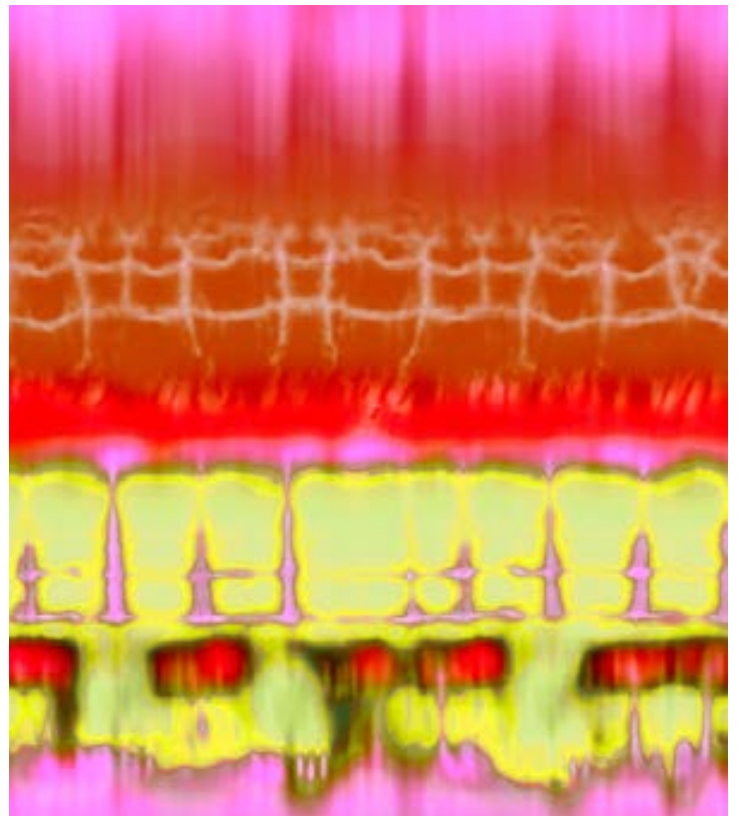
9N066 CW 002



9N066 CW 003



9N066 CW 004



9N066 CW 005



9N067 CW 001

WE DECLINE ANY RESPONSIBILITY FOR
POSSIBLE COLOR DIFFERENCES IN PRODUCTION



9N067 CW 002



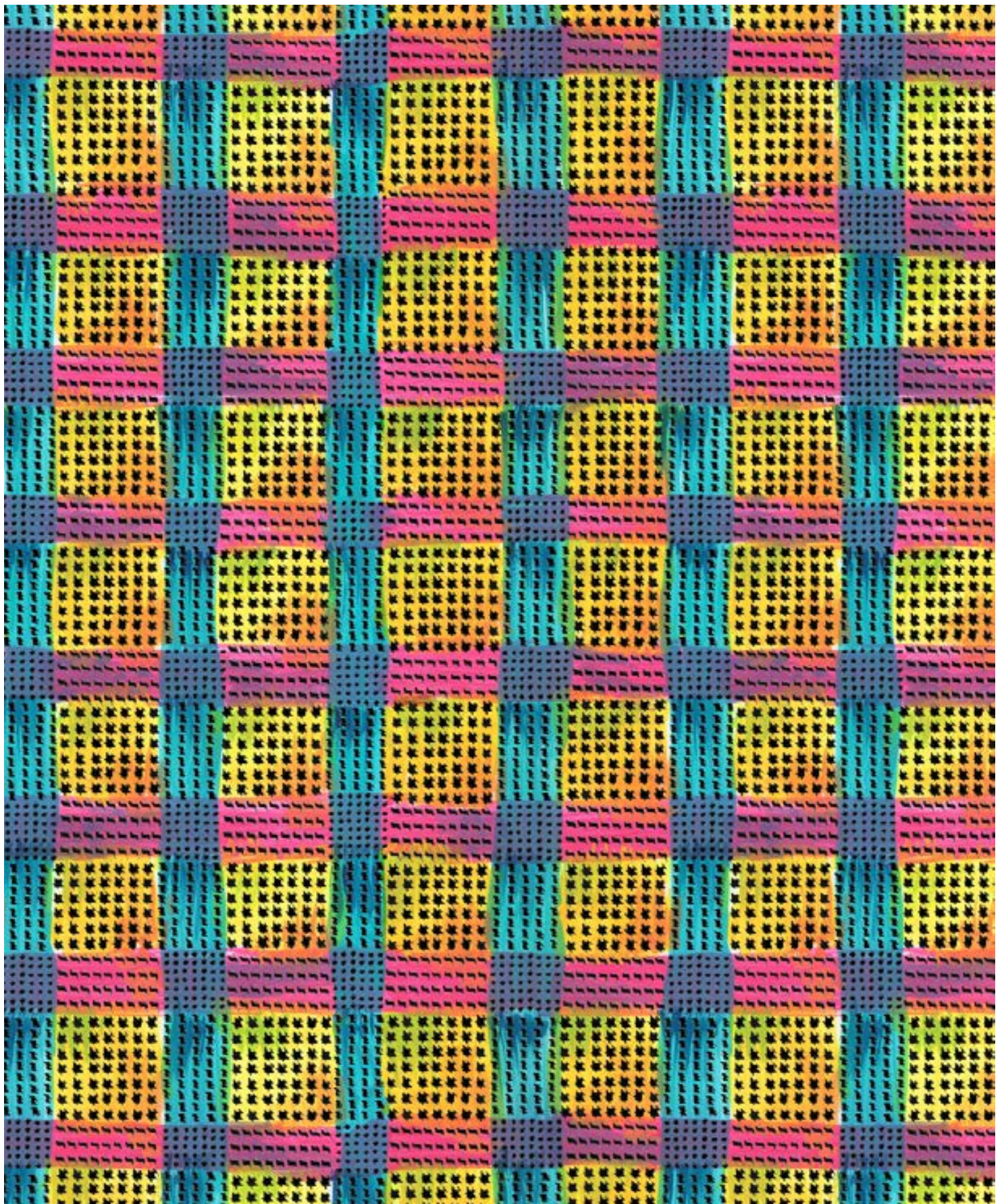
9N067 CW 003



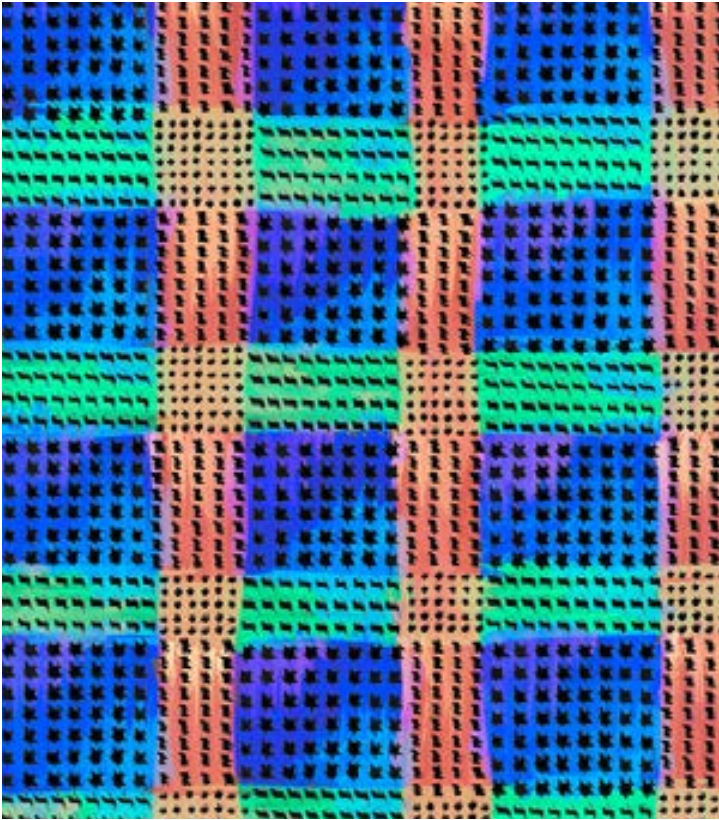
9N067 CW 004



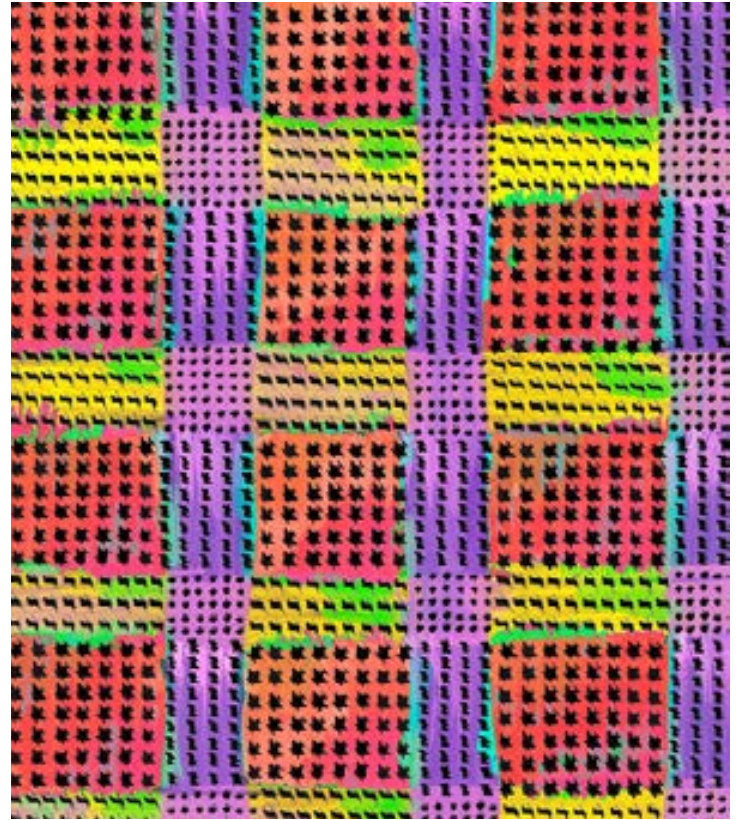
9N067 CW 005



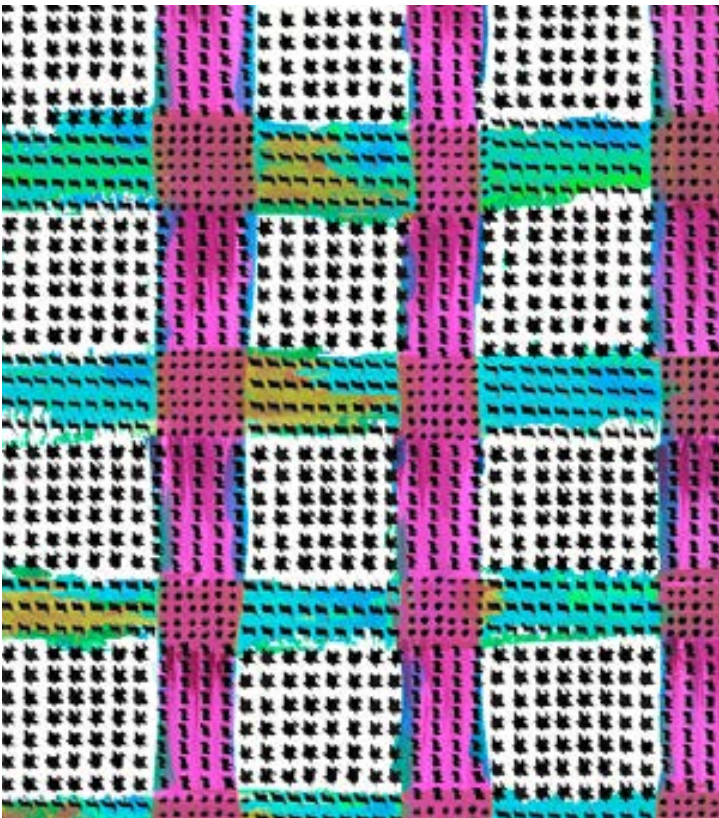
9N068 CW 001



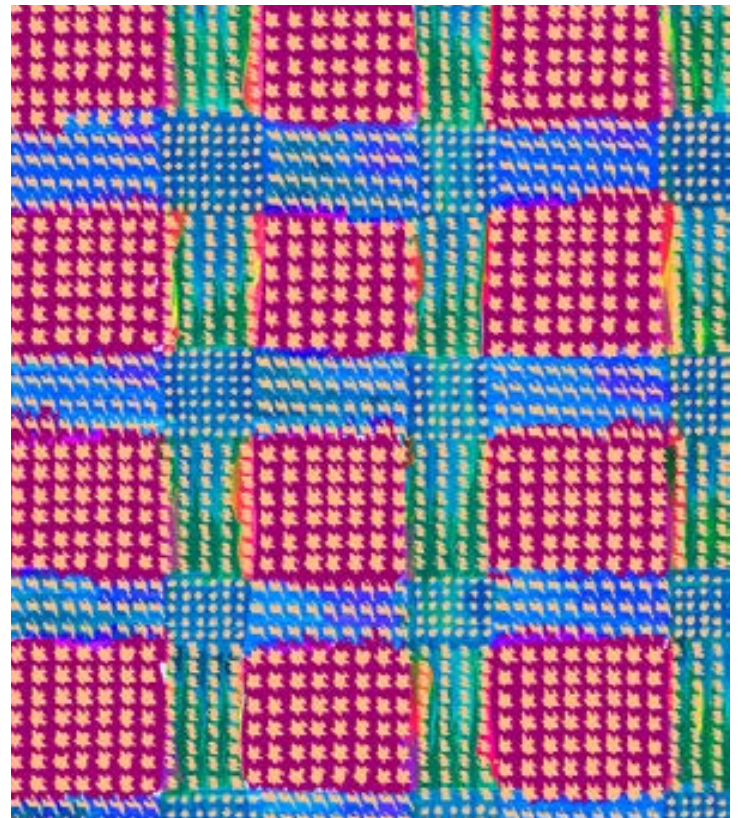
9N068 CW 002



9N068 CW 003



9N068 CW 004



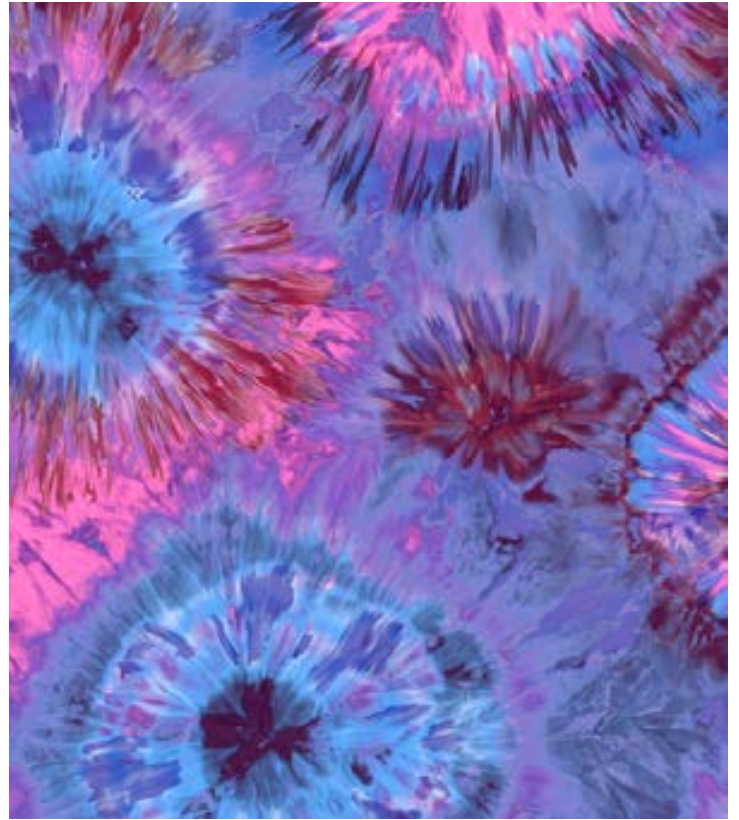
9N068 CW 005



9N069 CW 001



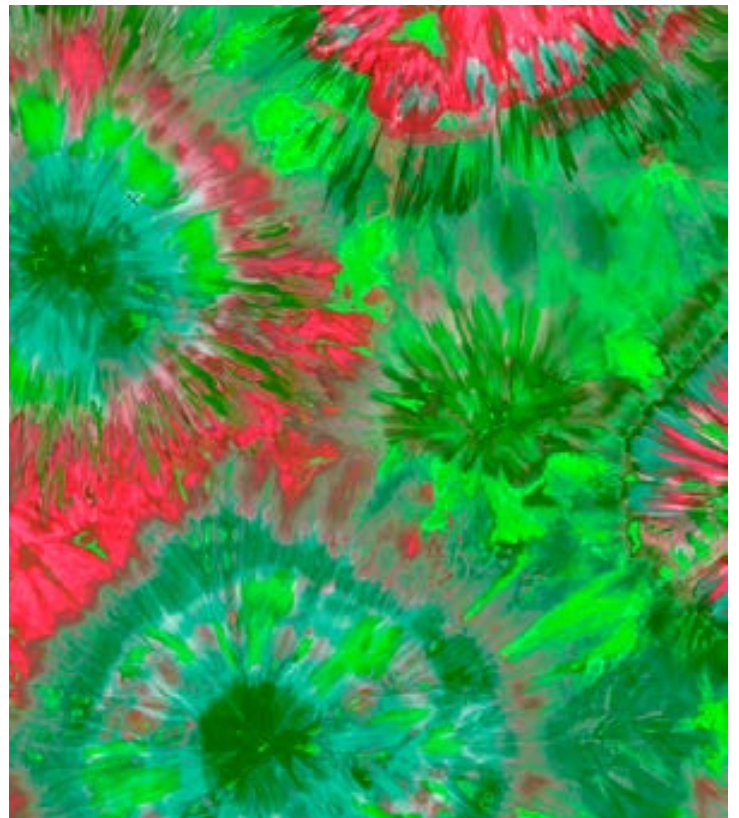
9N069 CW 002



9N069 CW 003



9N069 CW 004



9N069 CW 005



9N070 CW 001

WE DECLINE ANY RESPONSIBILITY FOR
POSSIBLE COLOR DIFFERENCES IN PRODUCTION



9N070 CW 002



9N070 CW 003



9N070 CW 004



9N070 CW 005



9N071 CW 001

WE DECLINE ANY RESPONSIBILITY FOR
POSSIBLE COLOR DIFFERENCES IN PRODUCTION



9N071 CW 002



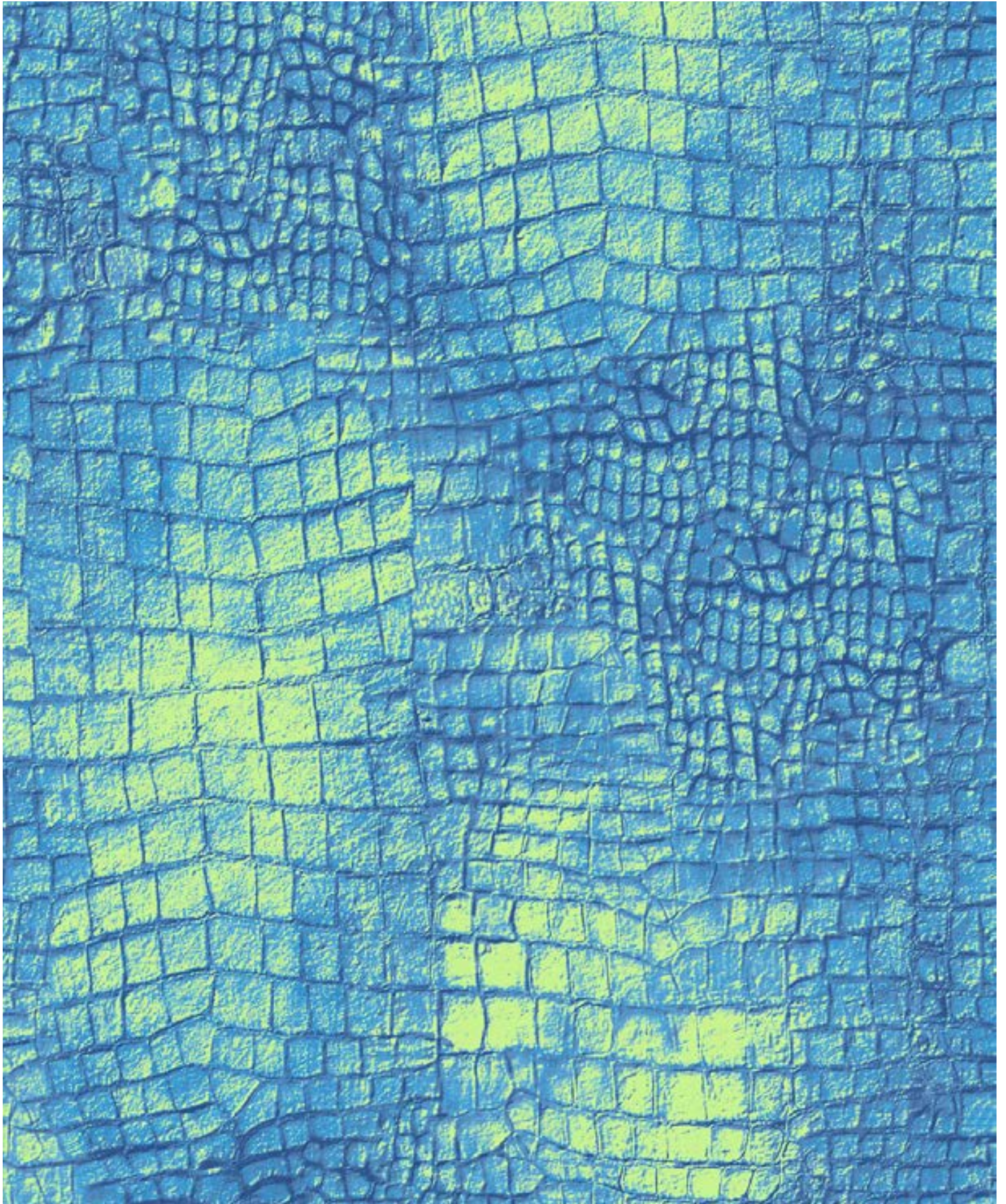
9N071 CW 003



9N071 CW 004

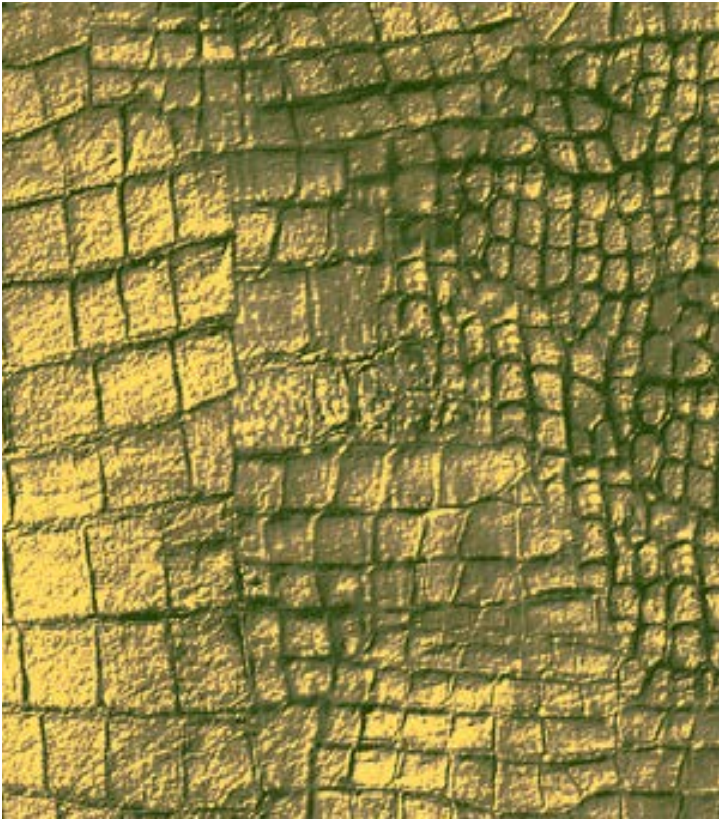


9N071 CW 005



9N072 CW 001

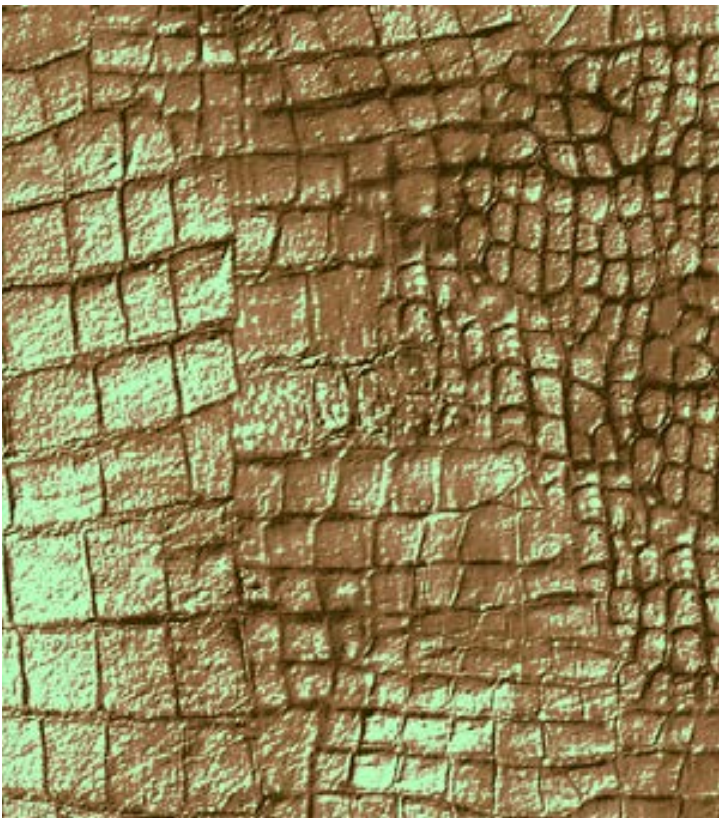
WE DECLINE ANY RESPONSIBILITY FOR
POSSIBLE COLOR DIFFERENCES IN PRODUCTION



9N072 CW 002



9N072 CW 003



9N072 CW 004



9N072 CW 005



9N073 CW 001

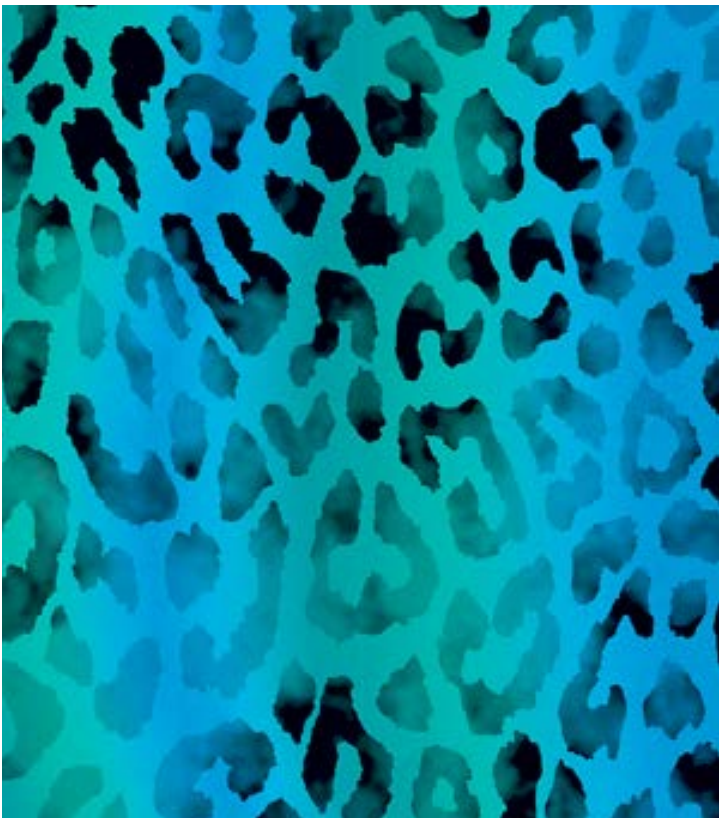
WE DECLINE ANY RESPONSIBILITY FOR
POSSIBLE COLOR DIFFERENCES IN PRODUCTION



9N073 CW 002



9N073 CW 003



9N073 CW 004



9N073 CW 005



9N074 CW 001

WE DECLINE ANY RESPONSIBILITY FOR
POSSIBLE COLOR DIFFERENCES IN PRODUCTION



9N074 CW 002



9N074 CW 003



9N074 CW 004



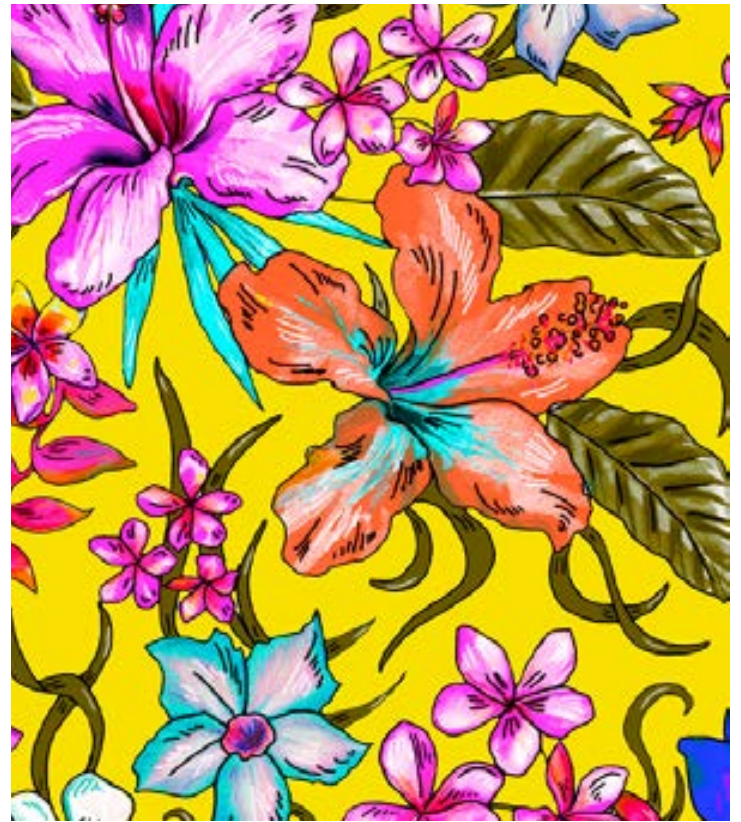
9N074 CW 005



9N075 CW 001



9N075 CW 002



9N075 CW 003



9N075 CW 004



9N075 CW 005



9N076 CW 001

WE DECLINE ANY RESPONSIBILITY FOR
POSSIBLE COLOR DIFFERENCES IN PRODUCTION



9N076 CW 002



9N076 CW 003



9N076 CW 004



9N076 CW 005



9N135 CW 001

WE DECLINE ANY RESPONSIBILITY FOR
POSSIBLE COLOR DIFFERENCES IN PRODUCTION



9N135 CW 002



9N135 CW 003



9N135 CW 004



9N135 CW 005

Decotrans®

Art Digitale

Scheda prodotto

Date 07.05.2021

DESCRIZIONE

Film di PET trasparente stampato con tecnologia digitale.

Utilizzato per la decorazione di accessori e capi in pelle, ecopelle e tessuti sintetici (poliuretanici, PVC, ecc.)

PROPRIETA'

Spessore nominale supporto di stampa: 19 µm

Grammatura supporto di stampa: da 24 a 29 g/m²

Altezza di stampa: fino a 1600 mm

Diametro dell'anima di cartone: 70 mm

Diametro bobina: fino a 180 mm nelle confezioni di cartone standard

Lunghezza bobina: fino a 250 mt nelle confezioni di cartone standard

STAMPA

Digitale su film di PET trasparente trattato con primer di stampa. Tutti i componenti utilizzati sono base acqua.

SISTEMI APPLICATIVI

E' possibile applicare il prodotto con calandre.

I parametri standard di trasferimento adottati da Sublitex per il controllo qualità' e la messa in tinta in fase di stampa in produzione sono riportati di seguito:

Condizioni di trasferimento in calandra		
Temperatura (°C)	Velocità (m/min)	Pressione (bar)
130 - 140	3 - 5	20 - 30

Si consiglia di ottimizzare le condizioni operative attraverso prove effettuate nei parametri effettivi di produzione, in funzione del mezzo di trasferimento e del supporto da nobilitare.



Cap. Soc. Euro 1.000.000 i.v.
Nr. R.E.A. CN-313093
Cod. Fisc. / P.I. IT
03737080048

Società con unico socio

Società soggetta all'attività di direzione e coordinamento di Miroglio S.p.A.


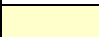









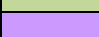



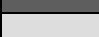
Sublitex s.r.l.
Strada Tagliata 25
12051 Alba CN - Italy
sublitex@miroglio.com
t. (+39) 0173 298741
f. (+39) 0173 298220

Sede legale:
Via S. Barbara 11
12051 Alba CN - Italy

sublitex.com

QUALITA' E R&D

Su ogni lotto viene effettuato il controllo qualità come da procedura interna, in particolare attraverso test comparativi di applicazione e valutazione della resa cromatica e della superficie nobilitata attraverso un confronto diretto con master di riferimento (standard di produzione).

SOLIDITA' PIGMENTI DECOTRANS ART DIGITALE				
INCHIOSTRO	Copertura di stampa		Solidità Luce*	
	100%	10%	ISO 105/B02 100%/10%	
Yellow			7-8	6
Magenta			7-8	6-7
Red			7	6-7
Cyan			7	6-7
Green			7	6-7
Violet			8	7-8
Black			8	7-8
Grey			8	7-8

*VALORI RIFERITI ALLA SCALA DEI BLU (MAX 8) PER I PIGMENTI PURI SOLIDI

L'effettiva solidità della variante dipende da numerosi fattori:

- quantità di inchiostro utilizzato;
- diluizione in vernice;
- tipologia di finitura.

Le migliori condizioni di stampa sono ricercate in base ad ogni disegno/variante, in modo da garantire la più elevata resistenza del prodotto finito.

STOCCAGGIO

Mantenere il prodotto in luogo asciutto e lontano da fonti di calore.

SCADENZA PRODOTTO

6 mesi nelle condizioni sopra citate.

IMBALLO

Il materiale viene consegnato all'interno di scatole di cartone.

Le informazioni sopra riportate sono da noi divulgate senza impegno, e rispecchiano attualmente il nostro "stato dell'arte".

Sublitex si riserva tuttavia la possibilità di modifiche e revisioni future, in accordo con l'evoluzione tecnologica e aziendale.

Si destina all'acquirente la verifica delle informazioni riportate, in funzione delle proprie competenze tecnologiche e impiantistiche.

Sublitex non risponde di applicazioni che non abbiano seguito le indicazioni date e la conservazione del prodotto appropriata, o di processi di finissaggio, post-trattamenti e lavorazioni successive alla fase di trasferimento.



Cap. Soc. Euro 1.000.000 I.v.
Nr. R.E.A. CN-313093
Cod. Fisc. / P.I. IT
03737080048

Società con unico socio

Società soggetta all'attività di direzione e coordinamento di Miroglio S.p.A.

Sublitex s.r.l.
Strada Tagliata 25
12051 Alba CN - Italy
sublitex@miroglio.com
t. (+39) 0173 298741
f. (+39) 0173 298220

Sede legale:
Via S. Barbara 11
12051 Alba CN - Italy
sublitex.com



SUBLITEX
The Innovative Printing

Strada Tagliata, 25 - 12051 Alba (CN) - Italy

Tel. +39 0173 298741
Fax +39 0173 298220
sublitex@miroglio.com
www.sublitex.com