

Sublitex Quality Control  
Laboratory and R&D:

**ACCELERATED  
WEATHERING TEST**

**Decotrans®**  
*Alu*

**TEST REPORT  
NUMBER:**

**RPA\_624\_1DA**



**TEST:  
XENON TEST**

**Apparatus: Q-SUN XE-3 HS**

**DECORATION :  
93191-201  
POWDER COATING:  
PC-13**

**TOTAL DURATION:  
1000 HOURS**

**SAMPLE EVALUATION:**

**RESIDUAL GLOSS**

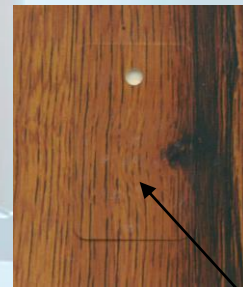
**103%**

**COLOUR VARIATION  
 $\Delta E$**

**1.09**

**GREY SCALE**

**4/5**



**EXPOSED AREA**

**FINAL RESULT:  
PASS**

Test was carried on samples prepared according to technical specifications supplied by raw materials manufacturers. However, accelerated weathering test is only one of the conditions necessary for the evaluation of the finished product. For a final assessment see further analysis on natural exposure in Florida.